

Section 9 - Sacred Heart

THE CEMETERY OF THE RESURRECTION  
 Hylan Blvd. and Sharrott Ave.  
 STATEN ISLAND, NEW YORK  
**SECTION - 9**

SCALE 1" = 20'

**PLOT REGULATIONS**

PLOTS 1 THRU 4 ARE FOR INSTITUTIONAL USE

PLOTS 5 THRU 226 ARE SINGLE GRAVE PLOTS FOR UPRIGHT MONUMENTS

**MONUMENT REGULATIONS (SIZE)**

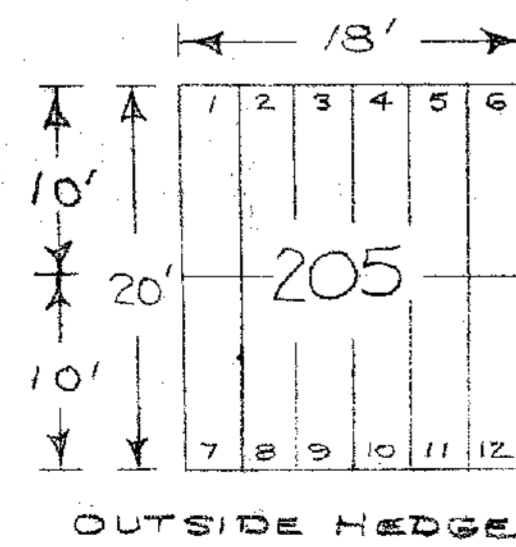
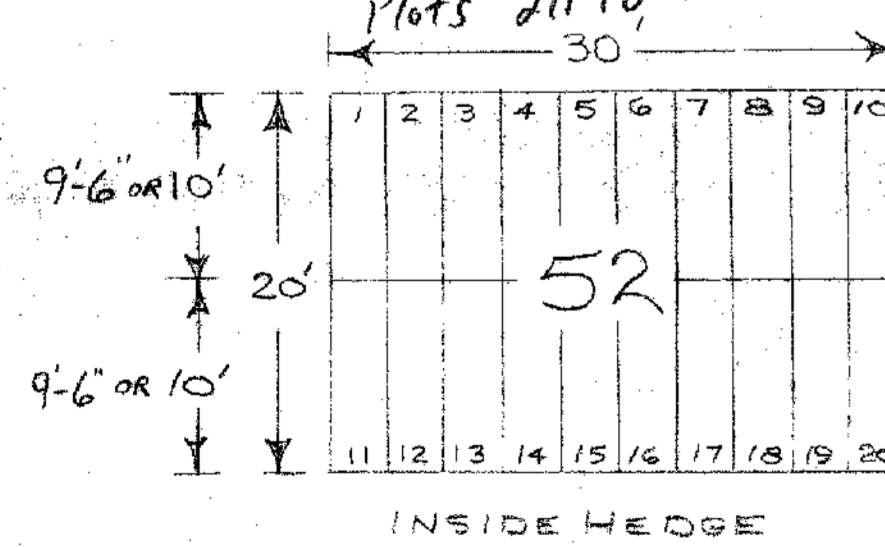
HEIGHT 3'-0" OVERALL

WIDTH 2/3 WIDTH OF PLOT

DEPTH 4" MAXIMUM

Plots 5 to 100  
 Plots 163 to 178  
 Plots 211 to 226

Plots 121 to 162  
 Plots 179 to 210



SAMPLE PLOTS

Section 9 - Sacred Heart

3260 GRAVES

DESIGN BY: LOUIS ANGUISH DATE: JAN. 1981  
 REV. BY: Peter J Ryan DATE: April 2000  
 REV. BY: R.H. DATE: 12-19-91

Section 8

Section 9 - Sacred Heart



Section 10

Section 11

Section 9 - Sacred Heart