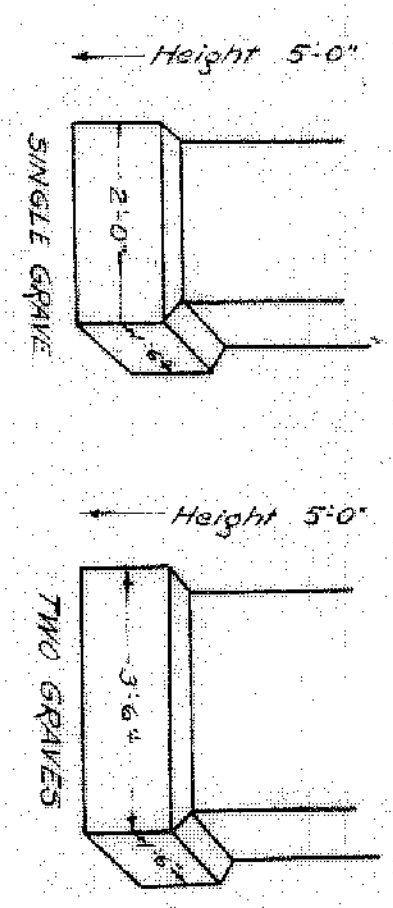
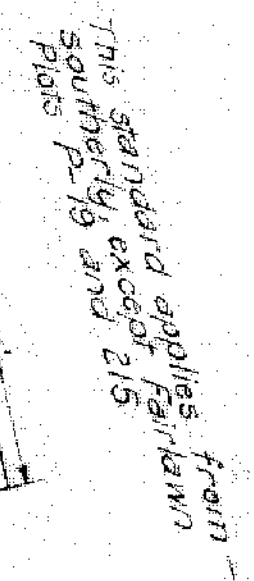


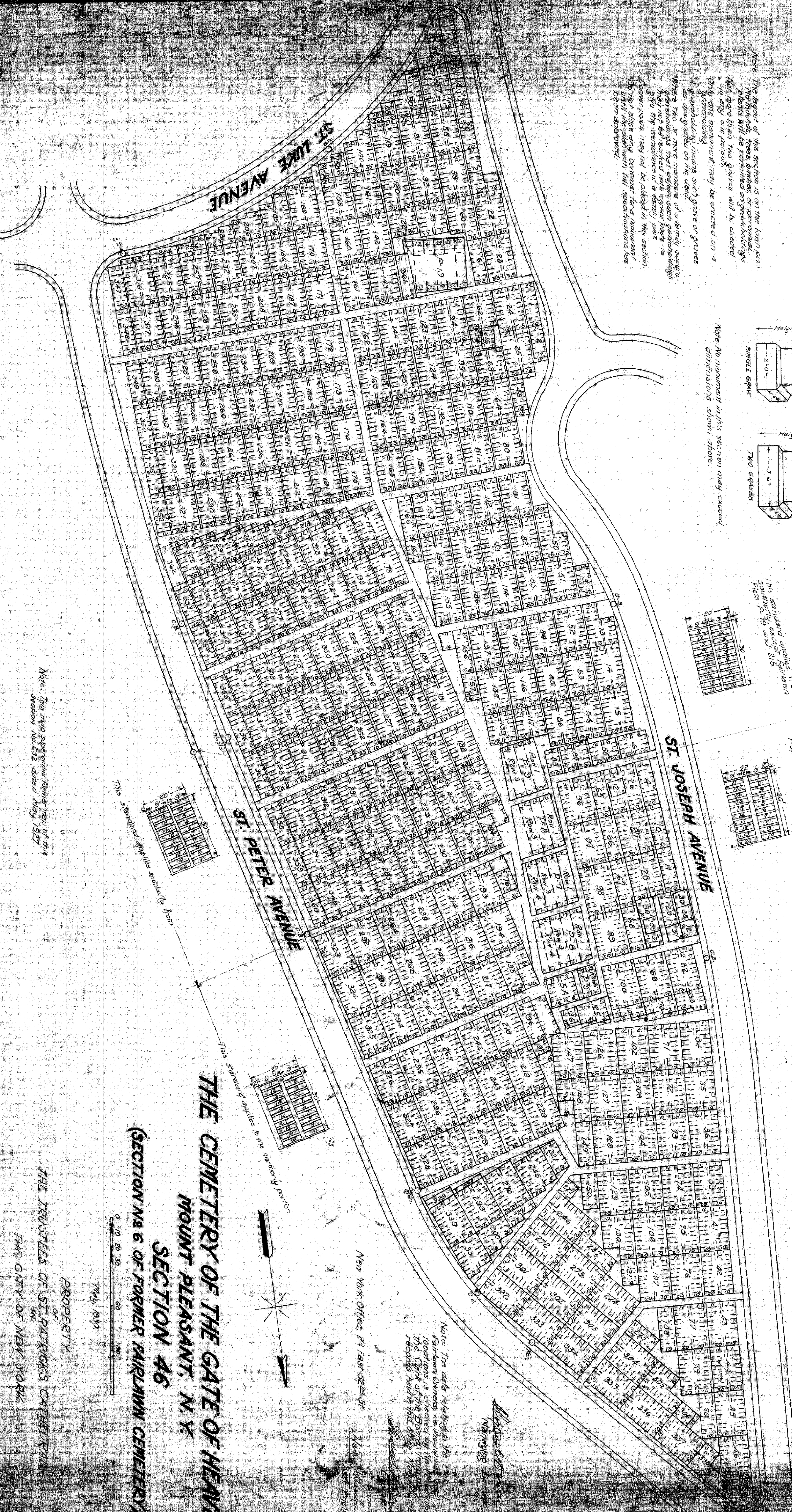
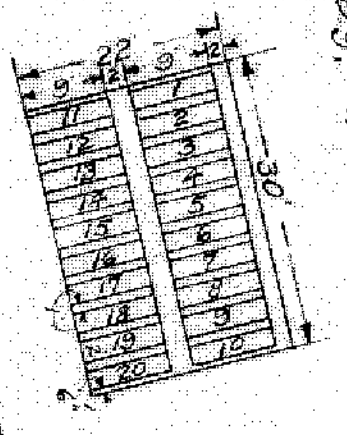
Note: The layout of this section is on the left side. No houses, trees, bushes, or perennial plants will be permitted on graveholdings. Not more than two graves will be erected on any one parcel. Only one monument may be erected on a graveholding as designated on the deed. Where two or more members of a family secure graveholdings that require such graveholdings they may be numbered as a family plot. Corner posts may not be placed in this section until the plot with full specifications has been approved.



Note: No monument in this section may exceed dimensions shown above.



This standard applies from P. 5, P. 6, P. 7, P. 8, P. 9, P. 10, P. 11, P. 12.



THE CEMETERY OF THE GATE OF HEAVEN
MOUNT PLEASANT, N. Y.
SECTION No 6 OF FORMER FAIRLAWN CEMETERY)

PROPERTY
 OF
 THE TRUSTEES OF ST. PATRICK'S CATHEDRAL
 IN
 THE CITY OF NEW YORK

May, 1930
 0 10 20 30 40 50 60 70 80 90 100

New York Office, 21 East 52nd St.

Note: The data relating to the plots of Fairlawn Cemetery, as the names and locations as shown by the drawings, the Clerk of the Board of Health, and records held in this office, May 1930.

Wm. H. ...
 Managing Director

Note: This map supersedes former map of this section No 632 dated May, 1927.

This standard applies from P. 19 and 210

This standard applies from P. 5, P. 6, P. 7, P. 8, P. 9, P. 10, P. 11, P. 12.

This standard applies southward from

This standard applies to the southern portion