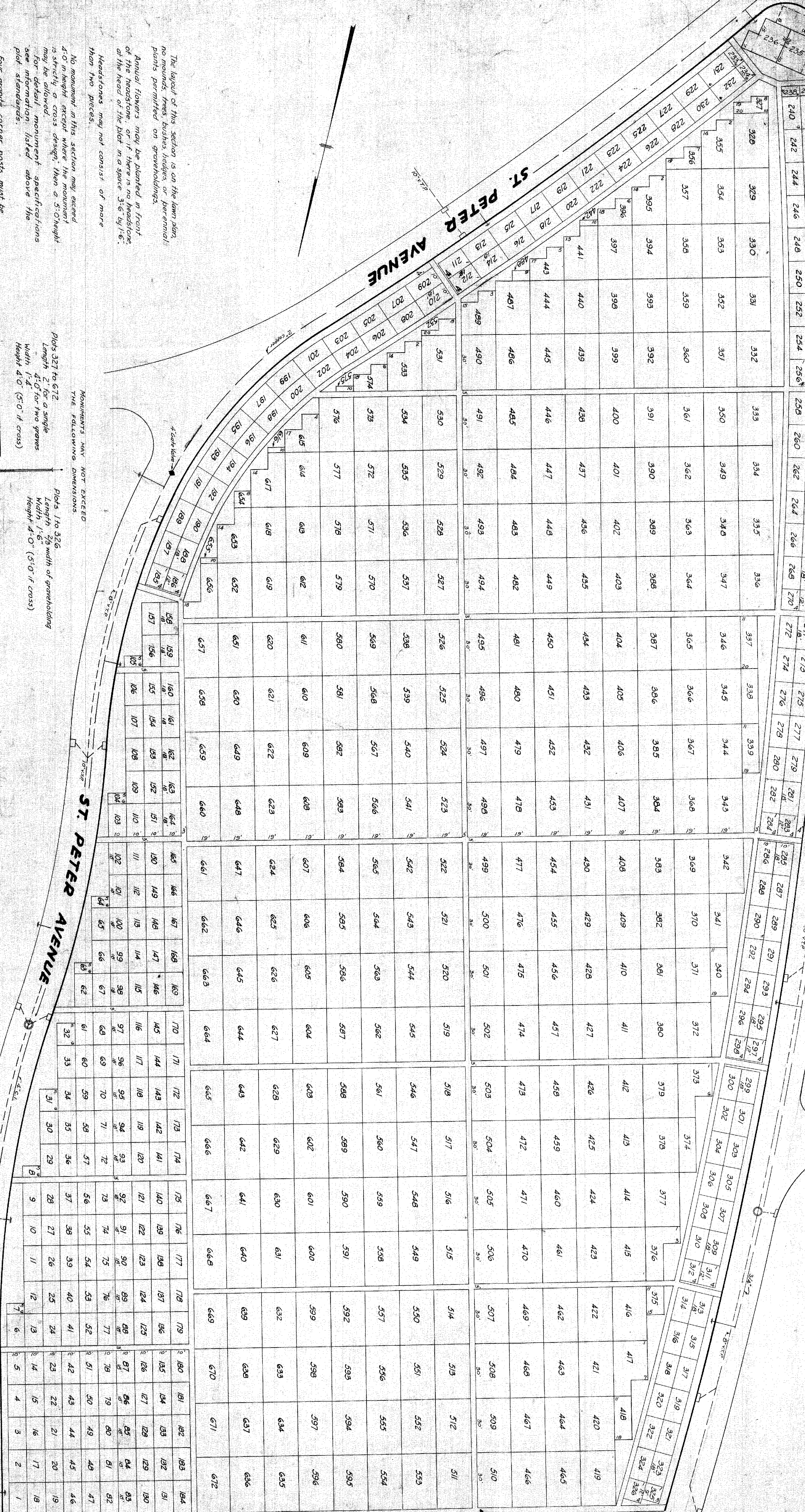


**ST. LUKE AVENUE**

**ST. PETER AVENUE**



The layout of this section is on the lawn plan, no mounds, trees, bushes, hedges, or perennial plants permitted on graveholdings.

Annual flowers may be planted in front of the headstone, or if there is no headstone of the head of the plot in a space 3'-6" by 1'-6".

Headstones may not consist of more than two pieces.

No monument in this section may exceed 4'-0" in height except where the monument is strictly a cross design, then a 5'-0" height may be allowed.

For detail monument specifications see information listed above the plot standards.

Four granite corner posts must be purchased and set to the lawn level on all plots having 3 or more graves. Each post must measure 5"x5" and 1'-6" in length with the initial engraved. Corner posts are not permitted on 2 grave plots.

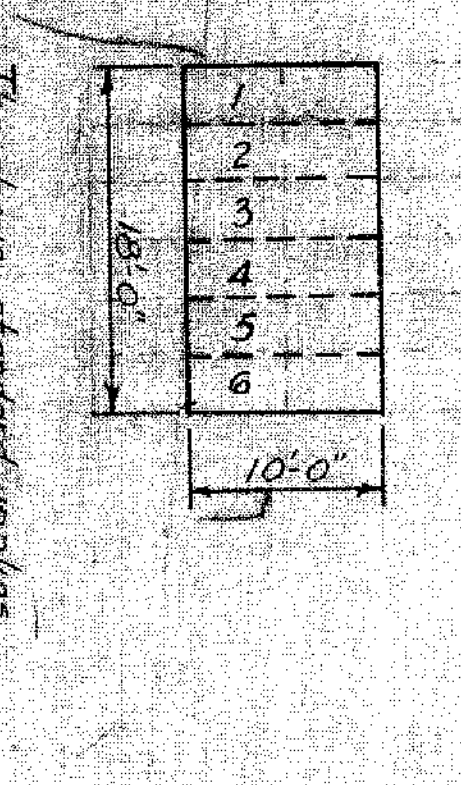
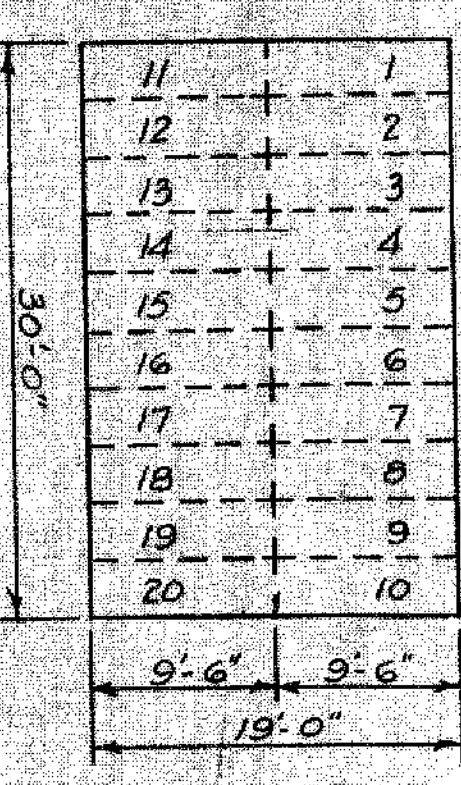
Footstones are not permitted.

Headstones in this section are to be set back to back with the rear of each back raised.

MONUMENTS MAY NOT EXCEED THE FOLLOWING DIMENSIONS:

Plots 327 to 612  
Length 4'-0" for a single  
Width 1'-4" (5'-0" if cross)  
Height 4'-0" (5'-0" if cross)

Plots 1 to 326  
Length 2'-9" width of graveholding  
Width 1'-6"  
Height 4'-0" (5'-0" if cross)



Approved: *W. L. ...*  
Managing Director

*W. L. ...*  
Superintendent & Engineer

*W. L. ...*  
Superintendent & Engineer

**SECTION 44  
CEMETERY OF THE GATE OF HEAVEN  
HAWTHORNE, N.Y.**