

Line	Angle
AB 20.98	ABC 110° 21'
BC 258.00	BCG 200° 49'
CG 120.56	CGF 54° 29'
GF 229.06	GFE 109° 15'
FE 353.24	FED 20° 02'
ED 243.12	EDA 204° 36'
DA 353.15	DAB 120° 28'

Receiving Tomb

ST. MATTHIAS AVE.

ST. STEPHEN AVE.

Fairway Plot #168

Joseph C. Brown
John J. Brown
 Managing Director
Charles H. Brown
 Engineer
Harry H. Brown
 Asst. Engineer

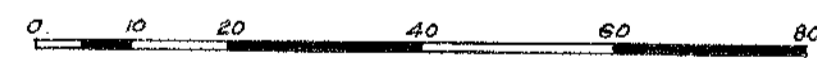
New York Office - 24 East 52nd St.

Corrected and brought up to date, Oct. 20, 1943.
 H. T. MATTHEW

This Section to be kept on lawn plan.



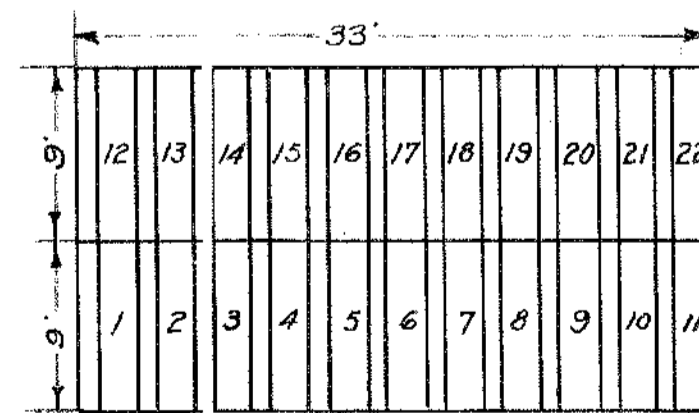
CEMETERY OF THE GATE OF HEAVEN
MOUNT PLEASANT, N.Y.
SECTION 43
SINGLE GRAVE SECTION



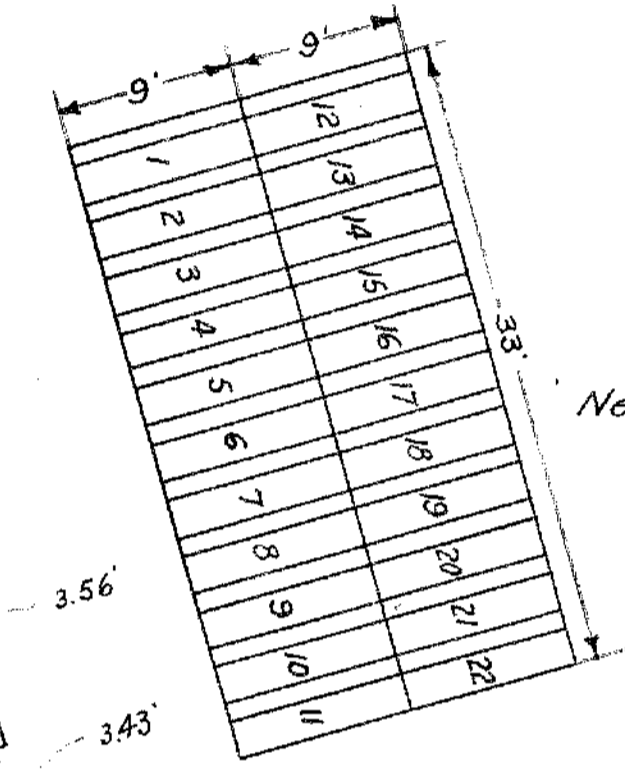
January, 1923.

This map supercedes former map dated July, 1919.

PROPERTY
 OF
 THE TRUSTEES OF ST. PATRICK'S CATHEDRAL
 IN
 THE CITY OF NEW YORK



Each grave 2' x 9' with 1' of space intervening



Plot #260