

Note: The burial privileges in this section will be decided in plots as indicated by the measurements hereon, and subject to the following restrictions:

This section will be graded and kept on the lawn plan.

Enclosures and curbing are forbidden.

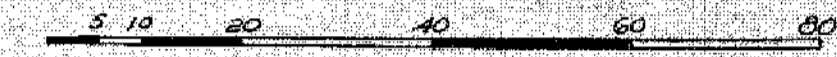
Corner posts must be set marking the boundary corners of plots, and not higher than two inches above ground.

A sufficient deposit must be made for the perpetual care of all mausoleums, and monuments over six feet in any direction.

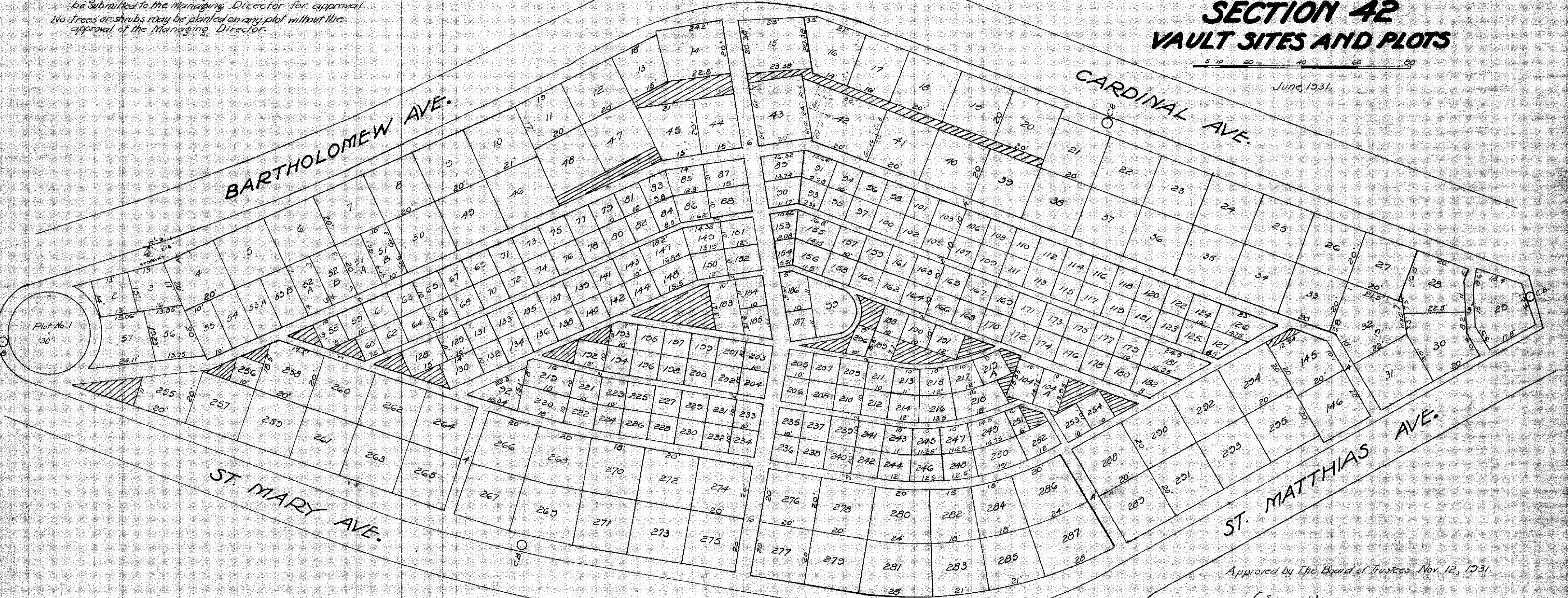
The design of each mausoleum, monument and headstone must be submitted to the Managing Director for approval.

No trees or shrubs may be planted on any plot without the approval of the Managing Director.

THE CEMETERY OF THE GATE OF HEAVEN MOUNT PLEASANT, N.Y. SECTION 42 VAULT SITES AND PLOTS



June, 1931.

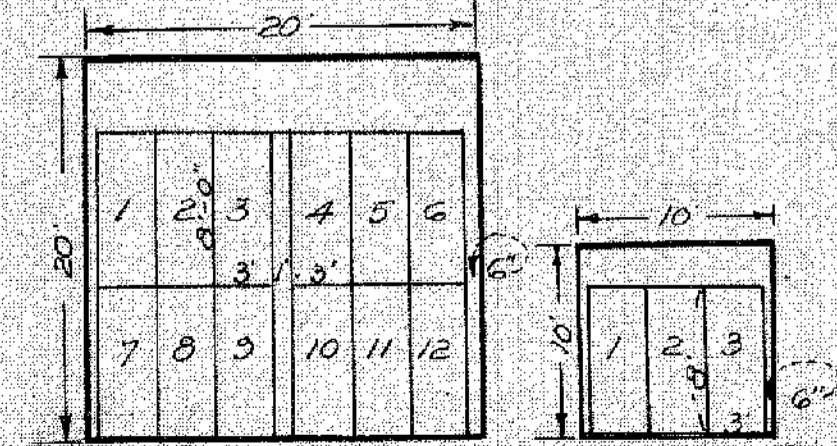


Approved by The Board of Trustees Nov. 12, 1931.

(Signed) Aloysius C. Dineen
Managing Director.

PROPERTY
OF
THE TRUSTEES OF ST. PATRICK'S CATHEDRAL
IN
THE CITY OF NEW YORK

New York Office: 24 East 52nd St.



Note: Plots 2 to 20, inc., face westerly, i.e., monument space is on east side of plot.

Corrected & brought up to date Jan. 7, 1933
by H.T.M.

Gerald J. Griffin
Supt. Engineer

Harry J. Hanlon
Asst. Engineer