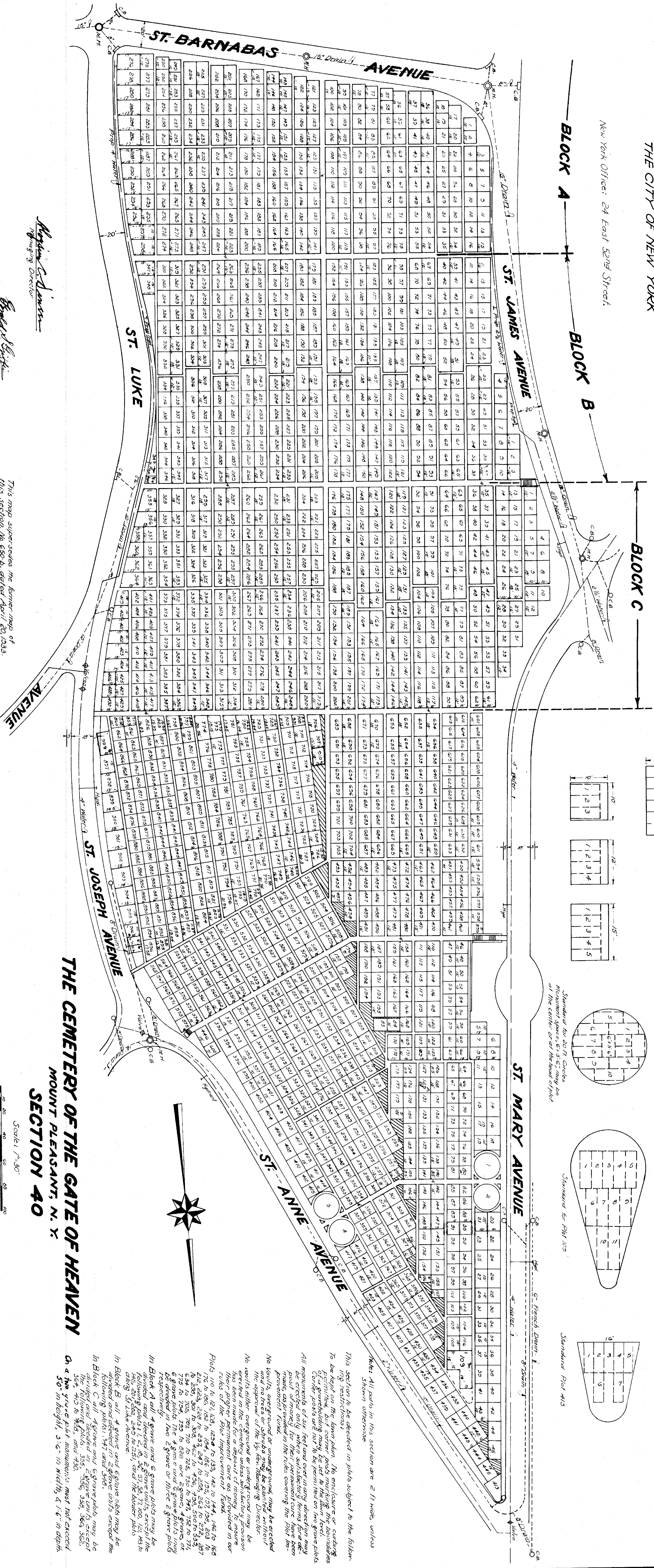


PROPERTY  
 OF  
 THE TRUSTEES OF ST. PATRICK'S CATHEDRAL  
 IN  
 THE CITY OF NEW YORK

New York Office: 24 East 52nd Street.



THE CEMETERY OF THE GATE OF HEAVEN  
 MOUNT PLEASANT, N. Y.  
 SECTION 40

*Maxwell C. Adams*  
 Managing Director

*Donald H. Griffin*  
 Engineer & Surveyor

This map supercedes the former map of this section, No. 650-B, dated April 20, 1933. Approved by The Board of Trustees at the meeting on \_\_\_\_\_

Scale: 1"=30'

Surveyed & Revised by H.T. Menzies - Dec. 2, 1937.

Refer to  
 Folder No. 2  
 Map No. 650-C

Note: All points in this section are 2 ft wide, unless shown otherwise.

This section is to be divided in plots subject to the following restrictions: No enclosure or curbing of any kind shall be permitted on the level. Corner posts are not to be permitted on the level. All monuments of six feet and over in any direction may be erected only when satisfactory terms for a deposit of money for their permanent care has been provided in the rules governing the plot. No vaults, overground or underground, may be erected in this section unless they are approved by the Managing Director.

No vaults, overground or underground, may be erected in this section unless they are approved by the Managing Director. No vaults, overground or underground, may be erected in this section unless they are approved by the Managing Director. No vaults, overground or underground, may be erected in this section unless they are approved by the Managing Director.

In Block A all grave and grave plots may be divided and placed in 2 ft wide units except the following plots: 1-47 and 546. In Block B all grave and grave plots may be divided and placed in 2 ft wide units except the following plots: 1-47 and 546. In Block C all grave and grave plots may be divided and placed in 2 ft wide units except the following plots: 1-47 and 546.

In Block C all grave and grave plots may be divided and placed in 2 ft wide units except the following plots: 1-47 and 546. In Block C all grave and grave plots may be divided and placed in 2 ft wide units except the following plots: 1-47 and 546. In Block C all grave and grave plots may be divided and placed in 2 ft wide units except the following plots: 1-47 and 546.