

Two (2) interments only shall be permitted in a grave.

The layout of this section is on the lawn plan.

No mounds, trees, bushes, hedges, or perennial plants permitted on graveholdings.

Annual flowers may be planted in front of the headstones, or if there is no headstone, at the head of the plot in a space 3'6" x 1'6".

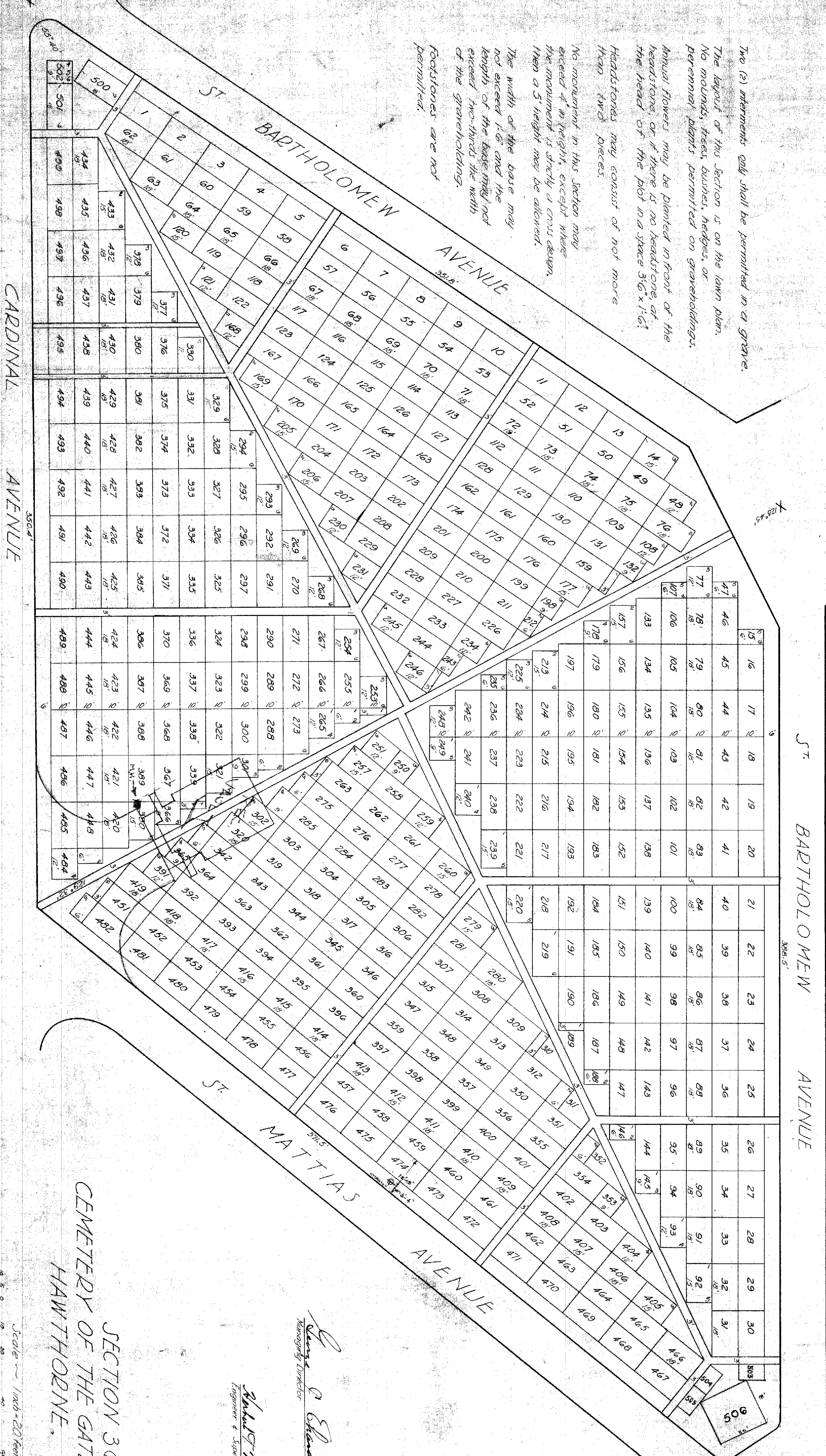
Headstones may consist of not more than two pieces.

No monument in this section may exceed 4' in height, except where the monument is strictly a cross design.

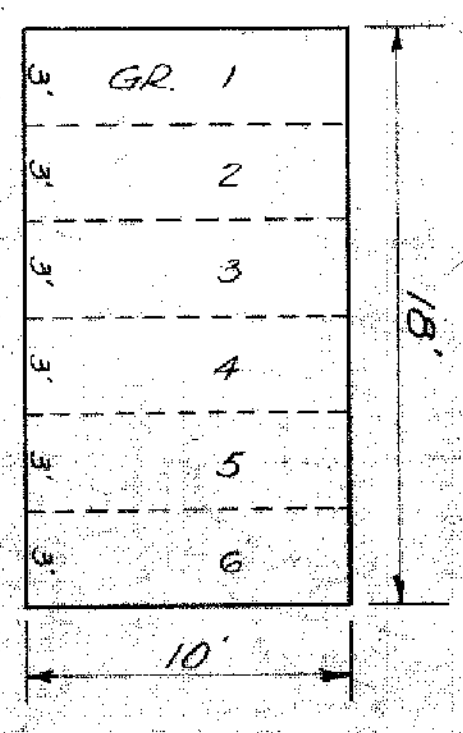
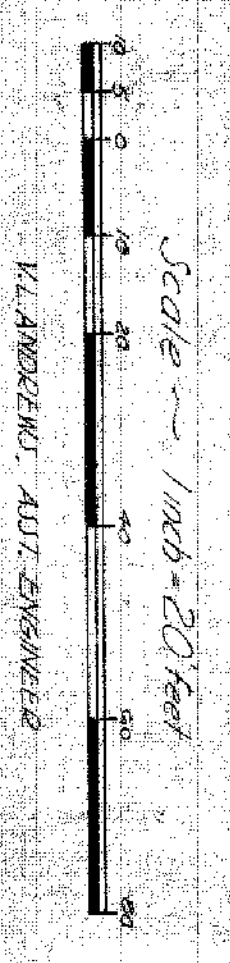
Then a 5' height may be allowed.

The width of the base may not exceed 1'6" and the length of the base may not exceed two-thirds the width of the graveholding.

Footstones are not permitted.



SECTION 3G  
CEMETERY OF THE GATE OF HEAVEN  
HAWTHORNE, N. Y.



*George A. Stewart*  
Managing Director

*John T. Kearney*  
Chief Cemetery Officer