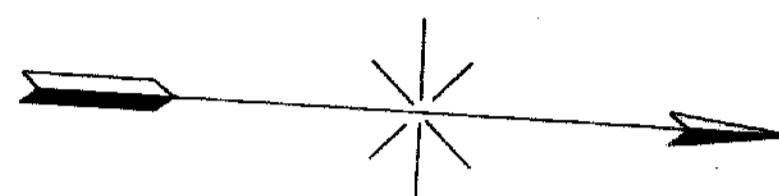
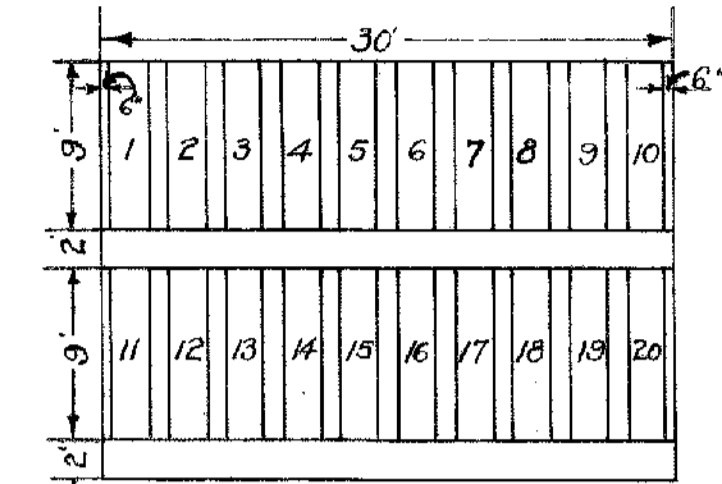
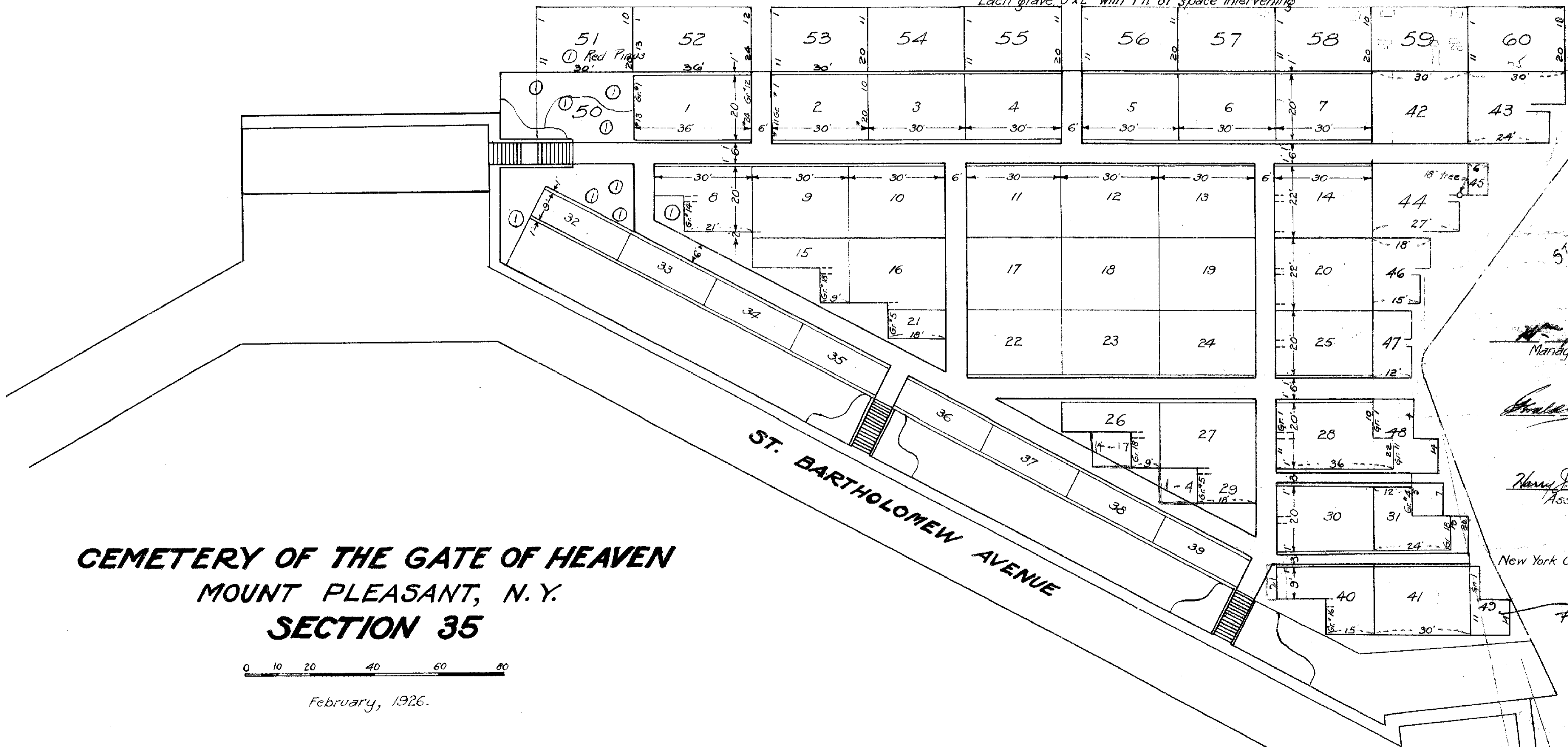


Revised March, 1933, to include plots 42 to 47 inc.

*Alphonse D'Amico*  
Managing Director.



Each grave 9'x2' with 1 ft. of space intervening



STEPHENS AVE.

ST. BARTHOLOMEW AVENUE

*W. J. Stewart*  
Managing Director

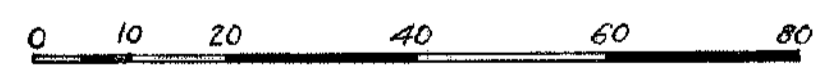
*Charles J. Higgins*  
Engineer

*Henry J. Haulon*  
Asst. Engineer

New York Office - 24 East 52<sup>nd</sup> St.

Plot 49

**CEMETERY OF THE GATE OF HEAVEN**  
**MOUNT PLEASANT, N. Y.**  
**SECTION 35**



February, 1926.

PROPERTY  
OF  
THE TRUSTEES OF ST. PATRICK'S CATHEDRAL  
IN  
THE CITY OF NEW YORK

Revised May-12-1959 to include Plots 50 to 60 inclusive.

V.L.A. Revised Dec. 20, 1937 H.T.M.