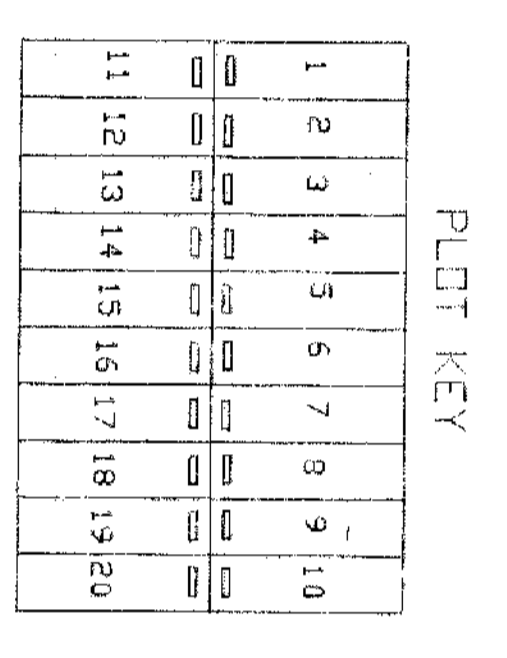
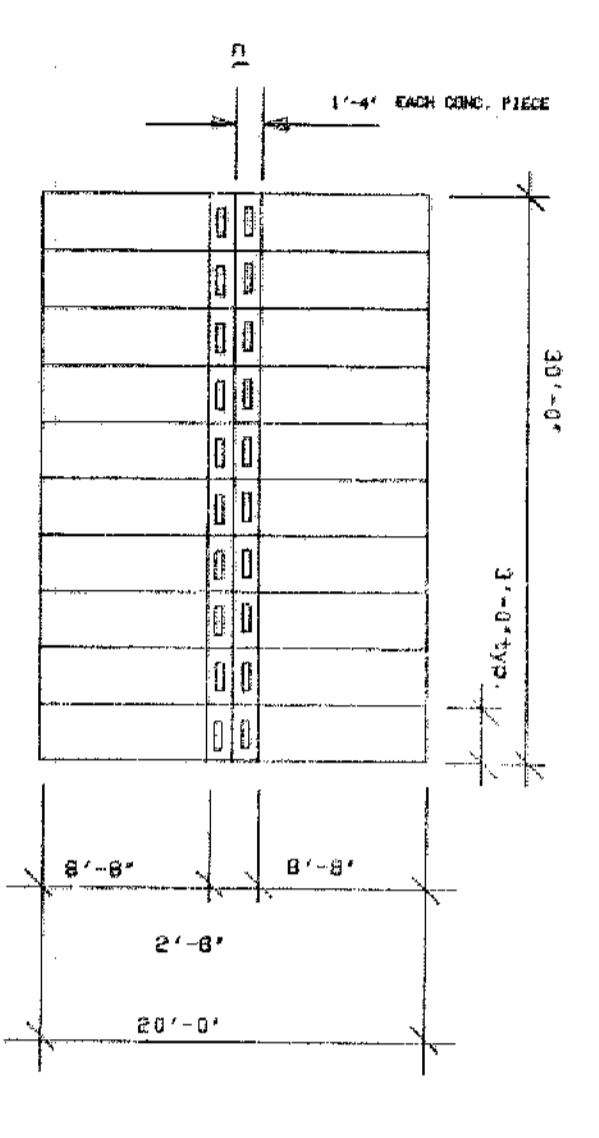
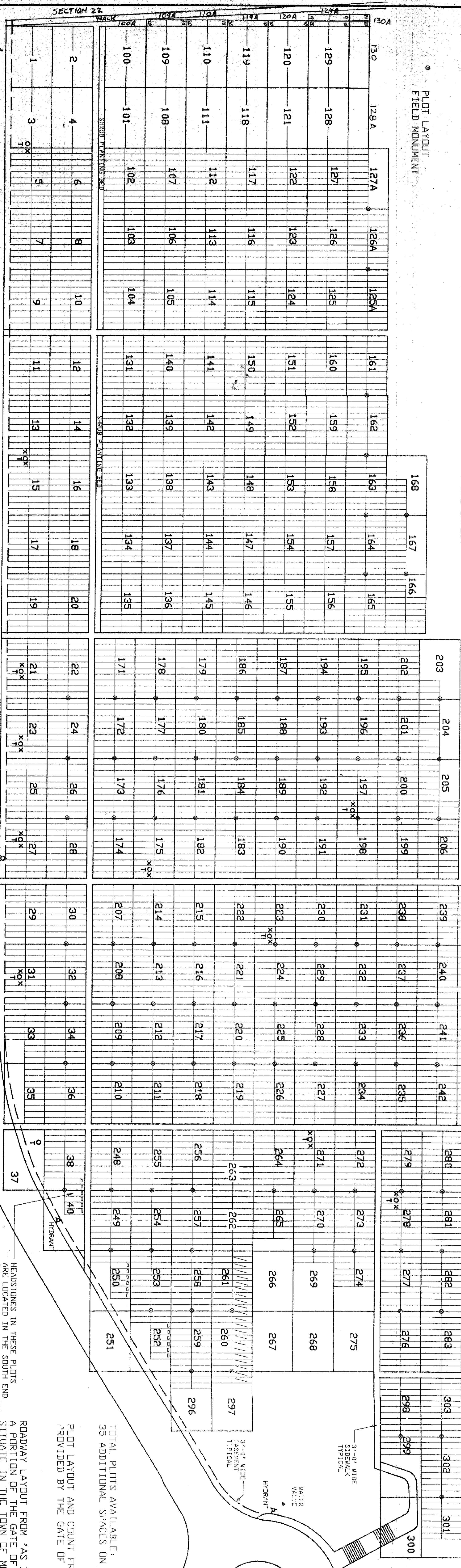


- TREE LOCATION
- ✕✕✕ TREE LOCATION WITH ADJACENT PLOTS EMPTY
- PLOT ON HOLD DUE TO EXISTING TREES
- HEADSTONE
- PLOT LAYOUT FIELD MONUMENT



PLOT DIMENSIONS AND TYPICAL HEADSTONE LAYOUT



PRESENT IN THESE SECTIONS

ROADWAY LAYOUT FROM 'AS BUILT SURVEY OF A PORTION OF THE GATE OF HEAVEN CEMETERY SITUATE IN THE TOWN OF MOUNT PLEASANT, WEICHSCHTER COUNTY, NEW YORK, BY ARISTOTLE BOURNAZOS, P.C., AND DATED 12/21/88

HEADSTONES IN THESE PLOTS ARE LOCATED IN THE SOUTH END OF THE PLOT AND FACE NORTWARDS

WATER VALVE

HYDRANT

CHRISTIAN SCHEMERS CROSS MONUMENT

TOTAL PLOTS AVAILABLE: 4144
35 ADDITIONAL SPACES ON HOLD

PLOT LAYOUT AND COUNT FROM INFORMATION PROVIDED BY THE GATE OF HEAVEN CEMETERY

NOVEMBER 10, 1988
REVISED DECEMBER 16, 1988
REVISED FEBRUARY 20, 1989
REVISED FEBRUARY 9, 1989

GATE OF HEAVEN CEMETERY - SECTION 3
PLOT LOCATION PLAN

SITE DESIGN ASSOCIATES
AN ALEXANDER ASSOCIATES AFFILIATE

GREENTRICH, CONNECTICUT
(203) 868 8682

