

PROPERTY
OF
THE TRUSTEES OF ST. PATRICK'S CATHEDRAL
IN
THE CITY OF NEW YORK

THIS MAP APPROVED BY THE BOARD OF
TRUSTEES AT THE FEB. 13, 1930 MEETING

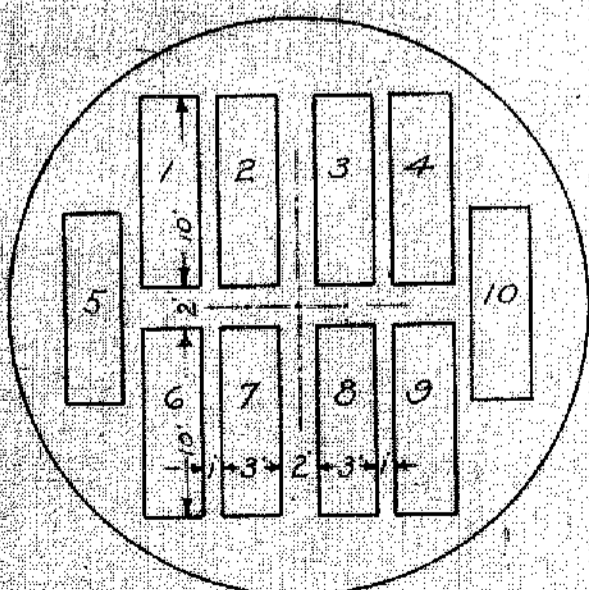
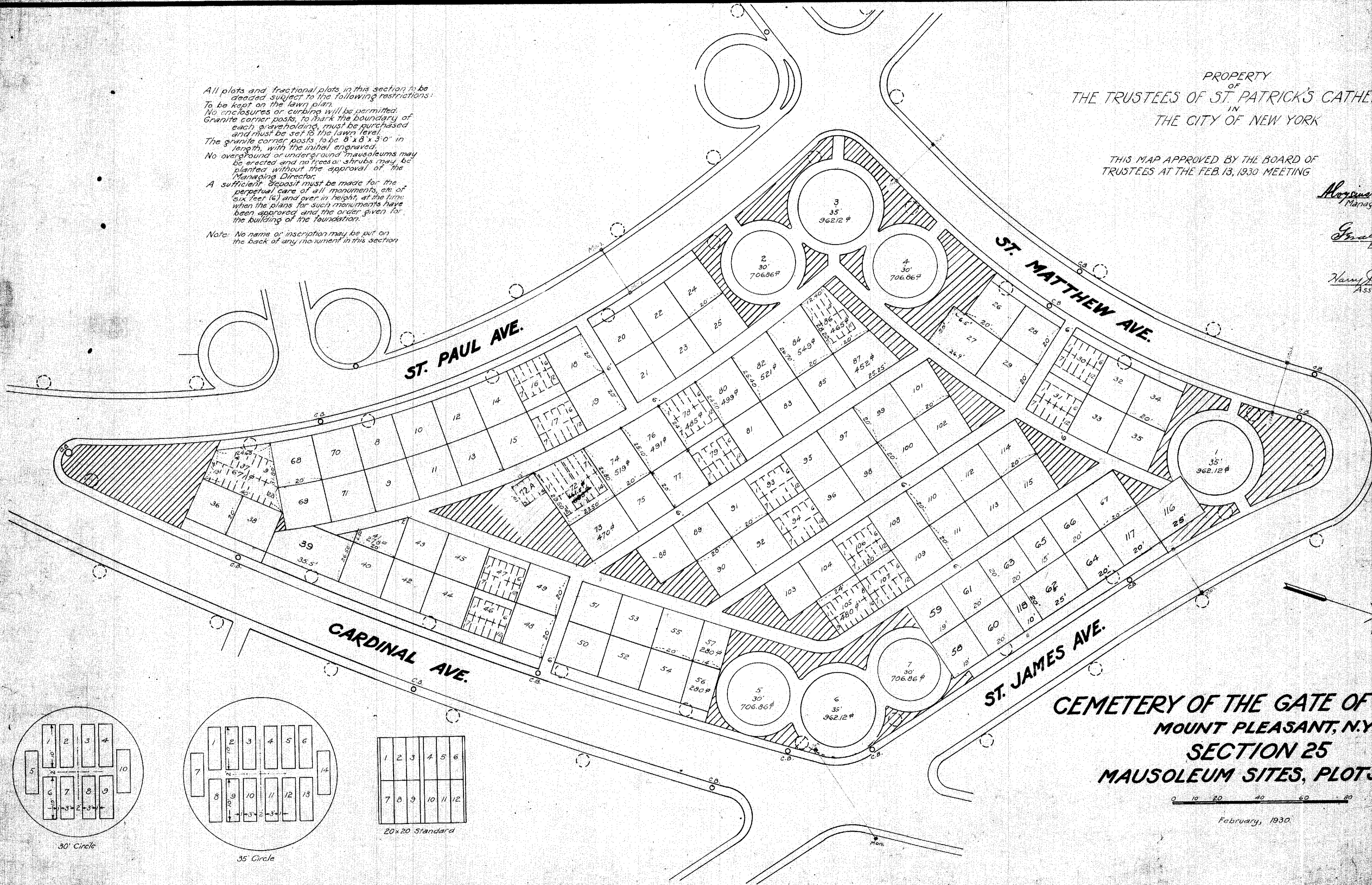
Harold C. ...
Managing Director

Ernest ...
Engineer

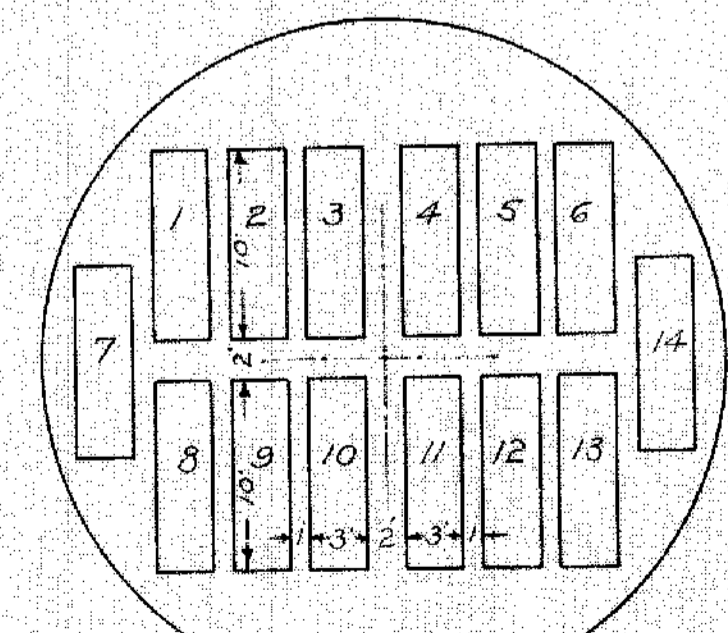
Harry ...
Asst. Engineer

All plots and fractional plots in this section to be
decided subject to the following restrictions:
To be kept on the lawn plan.
No enclosures or curbing will be permitted.
Granite corner posts, to mark the boundary of
each graveholding, must be purchased
and must be set to the lawn level.
The granite corner posts to be 8" x 8" x 3'-0" in
length, with the initial engraved.
No overground or underground mausoleums may
be erected and no trees or shrubs may be
planted without the approval of the
Managing Director.
A sufficient deposit must be made for the
perpetual care of all monuments, etc. of
six feet (6') and over in height, at the time
when the plans for such monuments have
been approved and the order given for
the building of the foundation.

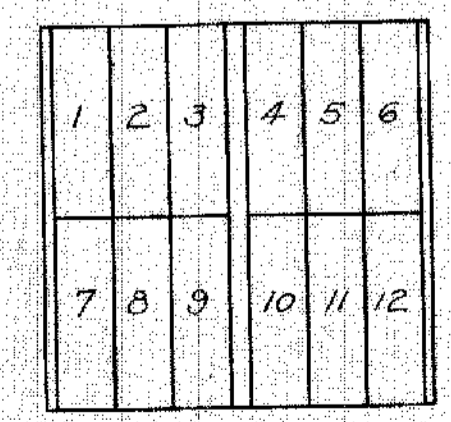
Note: No name or inscription may be put on
the back of any monument in this section



30' Circle

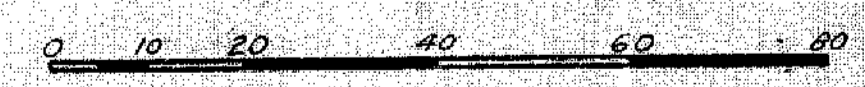


35' Circle



20x20 Standard

CEMETERY OF THE GATE OF HEAVEN
MOUNT PLEASANT, N.Y.
SECTION 25
MAUSOLEUM SITES, PLOTS, ETC.



February, 1930.