

**PROPERTY
OF
THE TRUSTEES OF ST. PATRICK'S CATHEDRAL
IN
THE CITY OF NEW YORK**

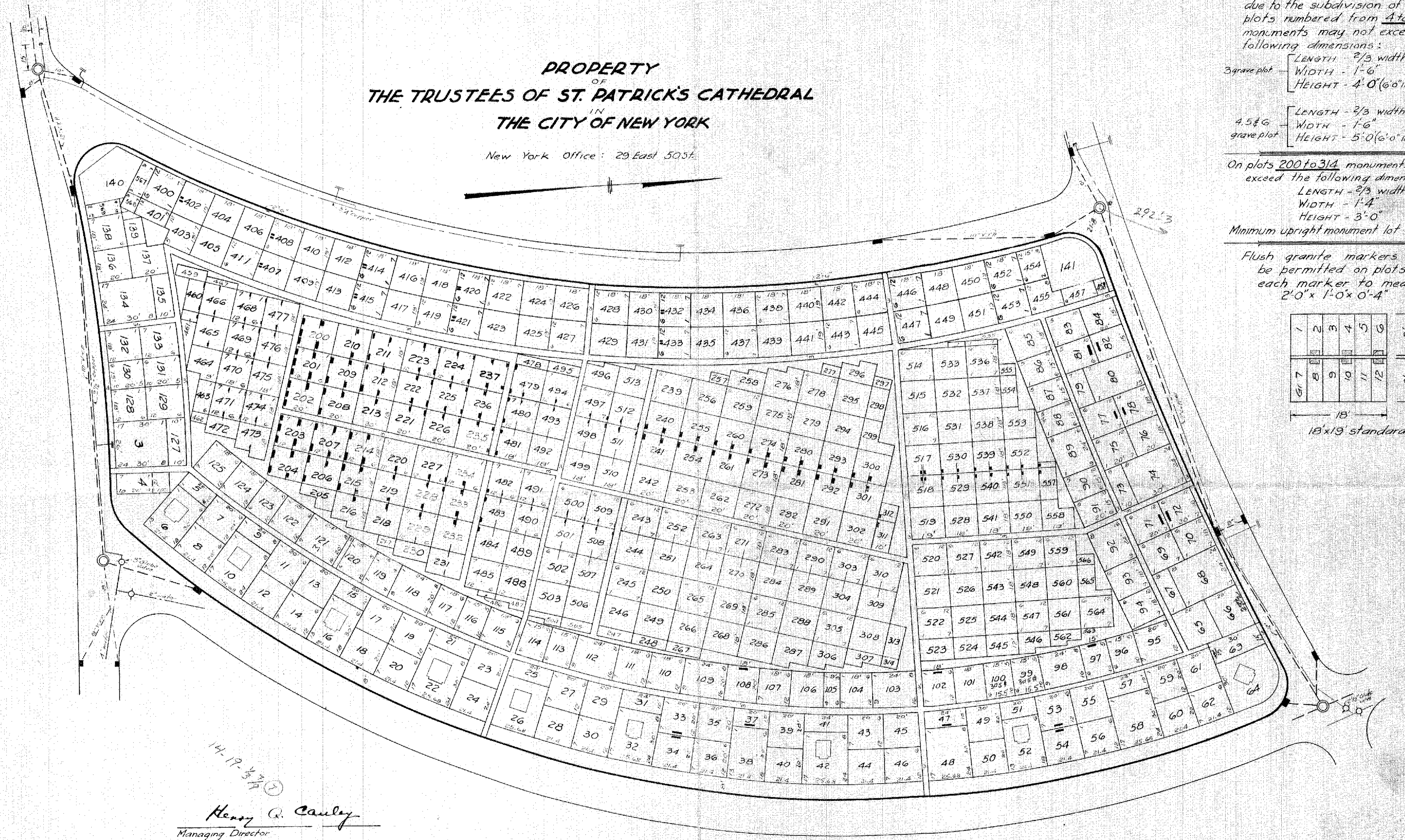
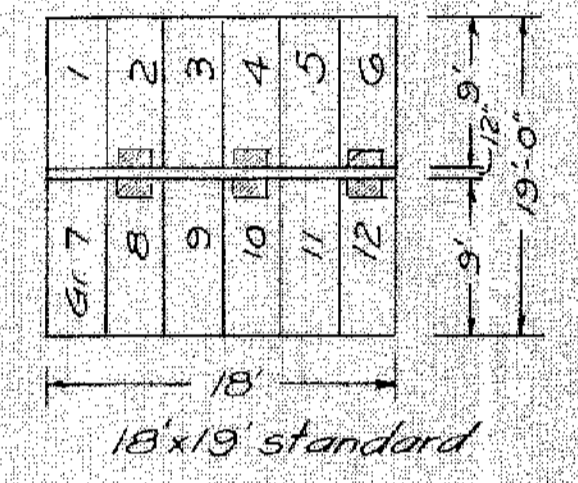
New York Office: 29 East 50 St.

Where 3, 4, 5 & 6 grave lots are permitted, due to the subdivision of certain plots numbered from 4 to 141 monuments may not exceed the following dimensions:

- 3 grave plot: LENGTH - 2/3 width of lot.
WIDTH - 1'-6"
HEIGHT - 4'-0" (6'-0" if strictly a cross)
- 4, 5 & 6 grave plot: LENGTH - 2/3 width of lot.
WIDTH - 1'-6"
HEIGHT - 5'-0" (6'-0" if strictly a cross)

On plots 200 to 314 monuments may not exceed the following dimensions:
LENGTH - 2/3 width of lot
WIDTH - 1'-4"
HEIGHT - 3'-0"
Minimum upright monument lot: 2 graves.

Flush granite markers only shall be permitted on plots 400 to 566 each marker to measure: 2'-0" x 1'-0" x 0'-4"



Henry R. Cauley
Managing Director

Narbut P. Manna
Superintendent - Engineer

Chief Cemetery Clerk

**SECTION 14
CEMETERY OF THE GATE OF HEAVEN
HAWTHORNE, N.Y.**

Scale - 1" = 30'
JAN. 1963

V.L. ANDREWS
ASST. ENGINEER

AREA: 4.45 Acs.
TOTAL GRAVES: 4800