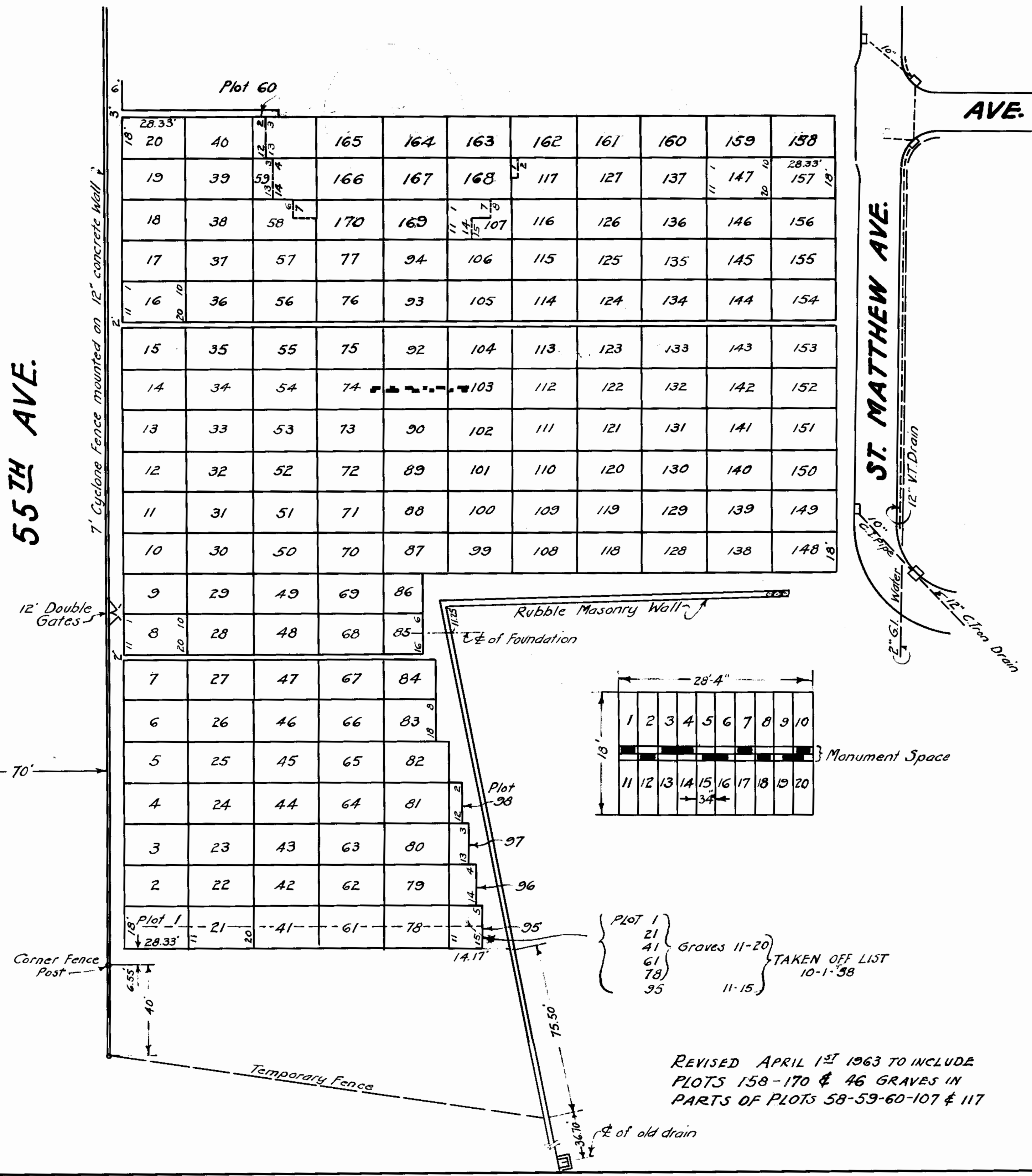


55<sup>TH</sup> AVE.

AVE.

PROPERTY  
OF THE  
**TRUSTEES OF ST. PATRICK'S CATHEDRAL**  
IN THE  
CITY OF NEW YORK  
N.Y. OFFICE - 29 EAST 50<sup>TH</sup> ST.

*Charles A. Brady*  
Managing Director  
*Ronald E. Fisher*  
Superintendent  
*Walter J. Wambler*  
Engineer  
*J. T. Kearney*  
Chief Cemetery Clerk



**CALVARY CEMETERY**  
**ST. DOMITILLA DIVISION**  
**SECTION 71**  
**SINGLE GRAVE SECTION**

REVISED APRIL 1<sup>ST</sup> 1963 TO INCLUDE  
PLOTS 158-170 & 46 GRAVES IN  
PARTS OF PLOTS 58-59-60-107 & 117

Scale: 1" = 30'  
Sept. 8<sup>th</sup>, 1955