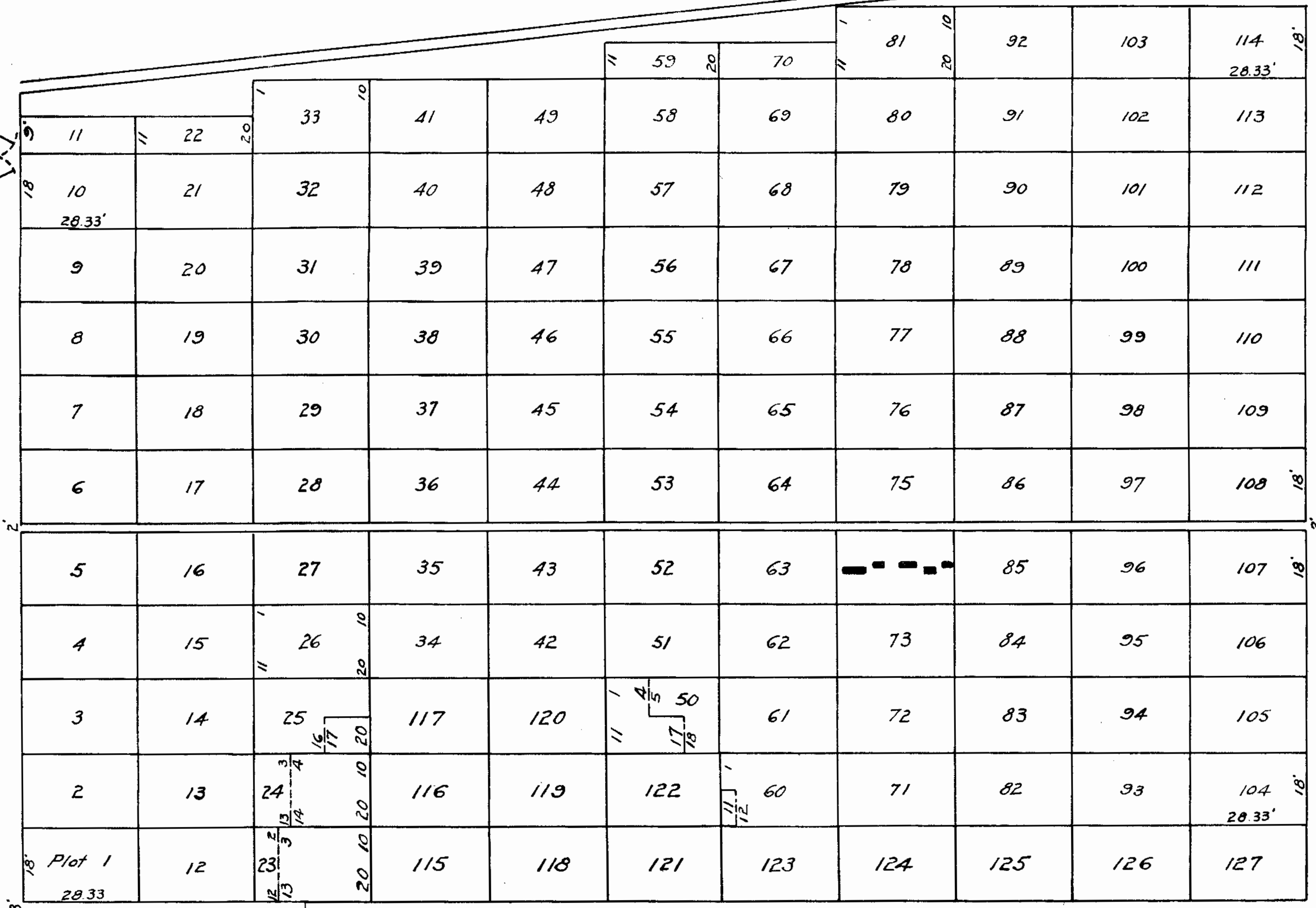


55TH AVE.

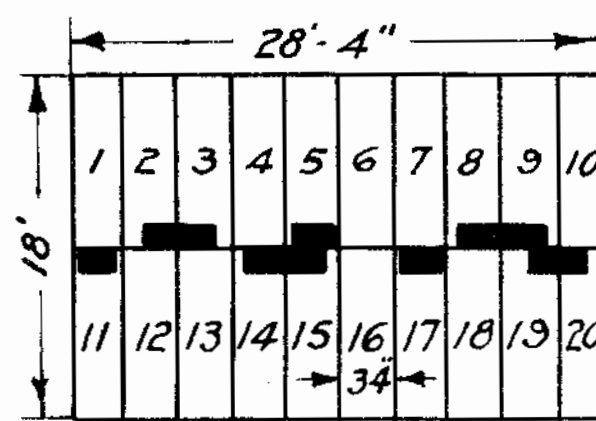
12' Gate opens in or outward

SEC. 69



SEC. 71

REVISED APRIL 1ST 1963 TO INCLUDE
13 FULL PLOTS & PARTS OF
NUMBERED PLOTS (46 GRAVES)



PROPERTY
OF THE
TRUSTEES OF ST. PATRICK'S CATHEDRAL
IN THE
CITY OF NEW YORK

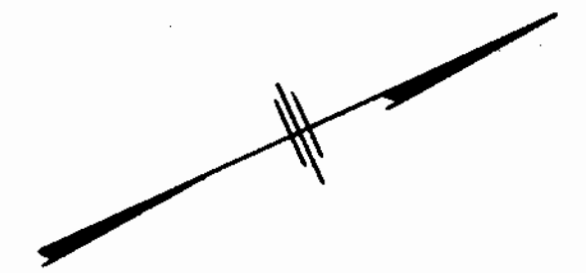
N.Y. OFFICE ~ 29 EAST 50TH ST.

Charles A. Brady
Managing Director

Russell E. Ficks
Superintendent

Harry J. Haulon
Engineer

S. T. Kearney
Chief Cemetery Clerk



ST. MATTHEW AVE.

SEC. 67

CALVARY CEMETERY
ST. DOMITILLA DIVISION
SECTION 70
SINGLE GRAVE SECTION

Scale: 1" = 20'

Sept. 2, 1955