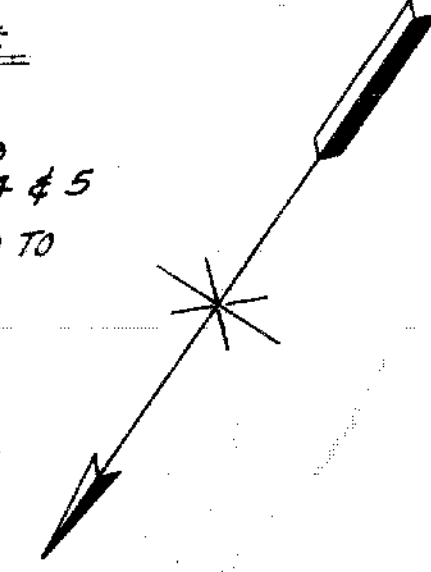


	36" WIDE	32" WIDE	30" WIDE
1	B 1-4 & 13-16	21 F 9-11	13 D 11-14
1	C 1-4	30 G 1-3	13 G 6-9
1	F 13-16		17 D 16-19
1	H 1-4		50 B 1-2-4 & 5
1	J 13-16		
1	A 1-4 & 13-16		
4	B 19-22		
7	C 1-4		
10	B 13-16 & 19-22		
16	C 13-16		
22	D 19-22		
25	C 13-16 & 19-22		
25	D 7-10		
28	D 7-10 13-16 & 19-22		
54	A 1-4		

NOTE:  
GRAVE NOS. CHANGED TO  
ABOVE - OCT. 17, 1957



This map supercedes former map dated November, 1916.

# CALVARY CEMETERY

## ST. CALIXTUS DIVISION

### SECTION 6-B

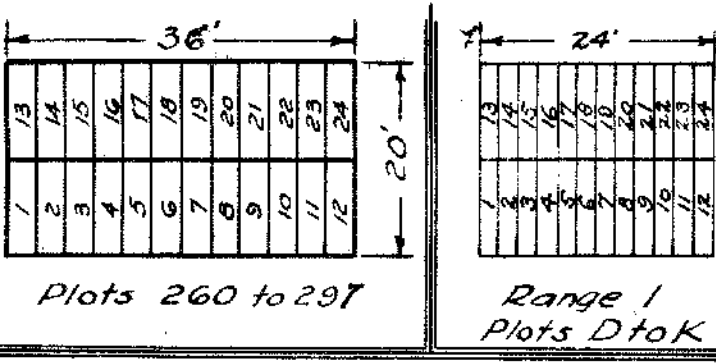
Note: Jan 25, 1963. The following paths converted into graves on the right side of Ranges 2-11. Plots A-C are 36" x 9 ft. Also included are Plots 150-223 & Ranges 12 to 51

Note: Vertical columns called ranges are numbered 1 to 5A. Ranges are divided into Plots lettered 'A' to 'K', with the letter 'I' omitted. Plots measure 24' x 18', 20' x 18', and 16' x 18', containing 24, 20 and 16 graves respectively, each grave being 9' x 2'

Note: Plots 1 to 116 are 30' x 22', each grave being 2' x 9' with one foot of space intervening. Selections of one or two graves must be placed in our Permanent Plot Improvement Fund.

Note: Plots D to K, Ranges 1-11. Plots measure 20' x 20', 24' x 20', and 16' x 20'. Grave measure 2' x 10', and these plots may be decided in quarters containing 5 and 6 graves for the 20' and 24' plots respectively. To be kept on lawn plan. No enclosures or mounds permitted on graveholdings.

Note: A sufficient deposit for the perpetual care of all monuments of six feet and over, to be erected in this section, must be placed in the Plot Improvement Fund at the time of giving contract for the erection of such monuments.



Note: 12-K-1/5 & 6/10 measure 3' x 9 ft.

Note: 31-E-7/10, 7/18 (Converted into 3' x 9' graves)  
31-F-7/10, 7/22 (November, 1957)

PROPERTY OF  
THE TRUSTEES OF ST. PATRICK'S CATHEDRAL  
IN  
THE CITY OF NEW YORK

*George E. Elmer*  
Managing Director

*Donald Griffin*  
Engineer

*Harry H. H. H.*  
Asst. Engineer

Revised November 1948.  
To include plots bordering Central Avenue designated as Range 1A - Plots A to K inclusive, and Plots 250 to 259 inclusive, in which each grave measures 3' x 9'.

Corrected & brought up to date  
January 11, 1938. H.J. Manica.

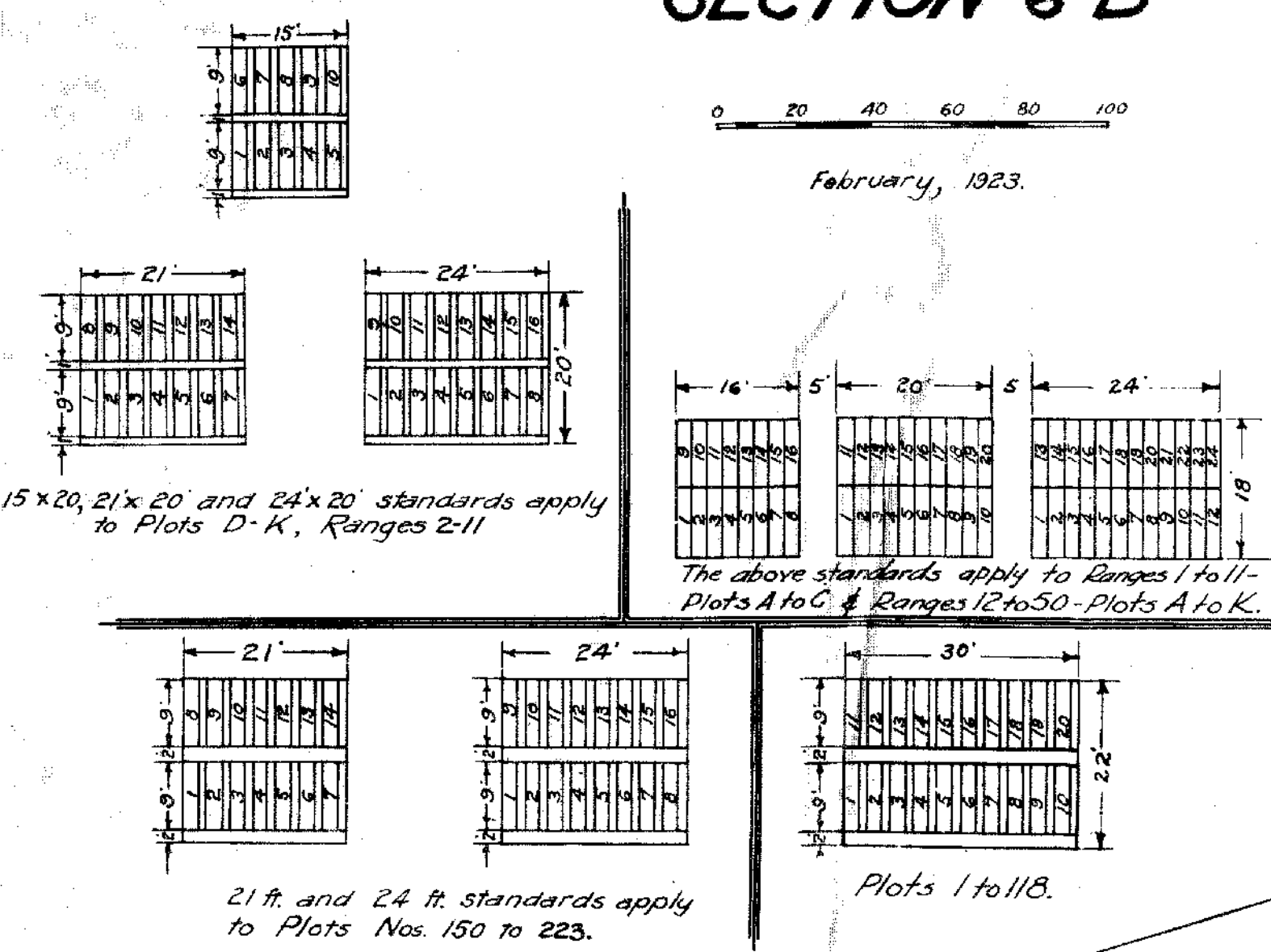
New York Office - 24 E. 52nd St.

Revised October 20, 1924.

Note: Plots Nos. 150 to 221 are single grave plots. In 20 ft. ranges width is increased to 21 ft. to allow for seven graves on a tier. The walks on each side of these plots are reduced 6 inches to allow for the increased width of plot.

Note: Plots along border in single grave portion of this section are increased in size. Plots 117 and 118 are added.

Note: Ranges 2-11. Plots D-K are single grave plots. 20 ft. ranges are increased to 21 ft. as noted above.



15 x 20, 21 x 20 and 24 x 20 standards apply to Plots D-K, Ranges 2-11

The above standards apply to Ranges 1 to 11 - Plots A to C & Ranges 12 to 50 - Plots A to K.

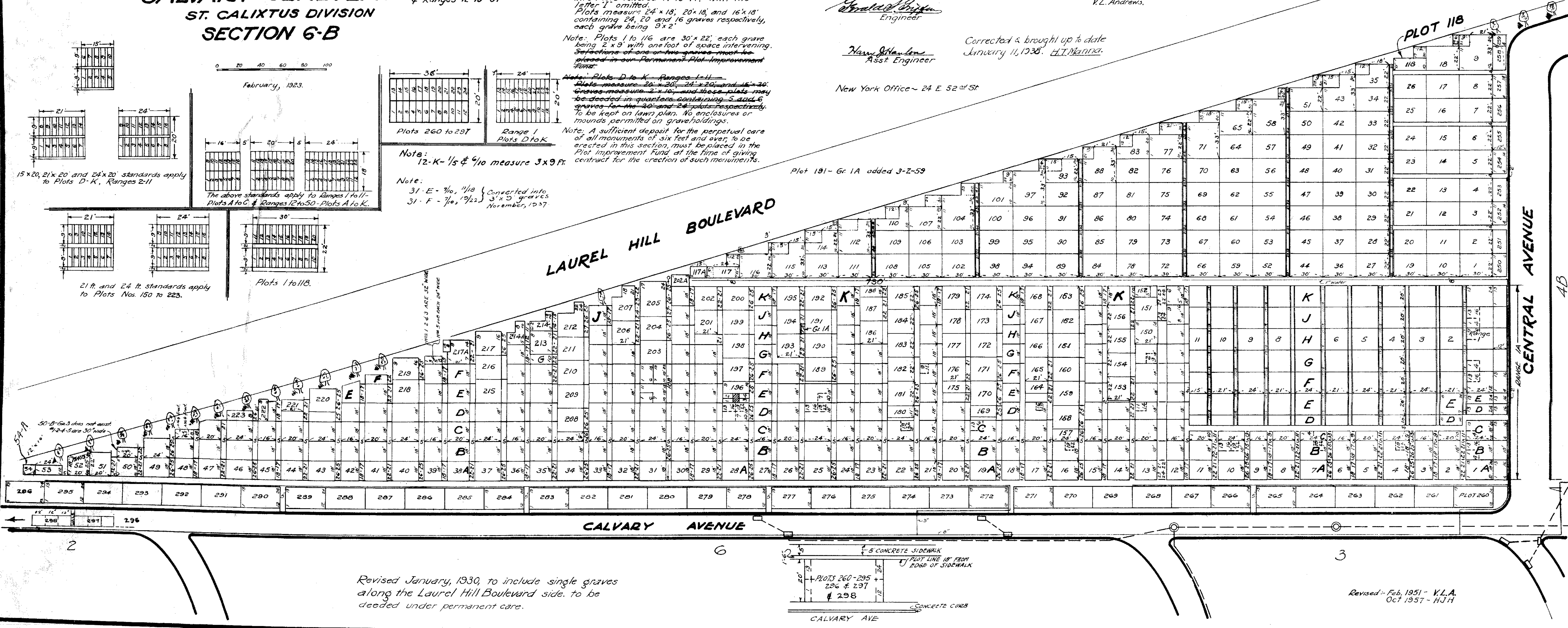
21 ft. and 24 ft. standards apply to Plots Nos. 150 to 223.

Plots 1 to 118.

LAUREL HILL BOULEVARD

CENTRAL AVENUE

CALVARY AVENUE



Revised January, 1930, to include single graves along the Laurel Hill Boulevard side, to be decided under permanent care.

Revised - Feb. 1951 - V.L.A.  
Oct 1957 - H.J.H.