

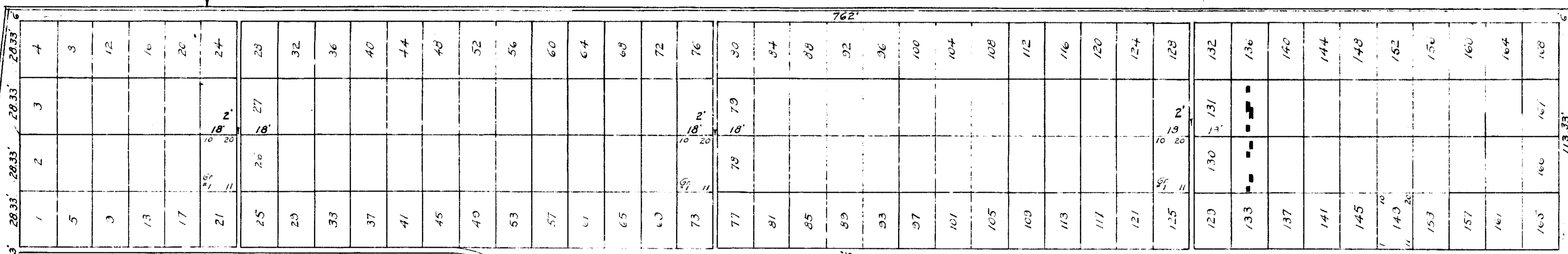
55TH AVE.

54TH DR

54TH RD.

54TH AV.

50TH ST.



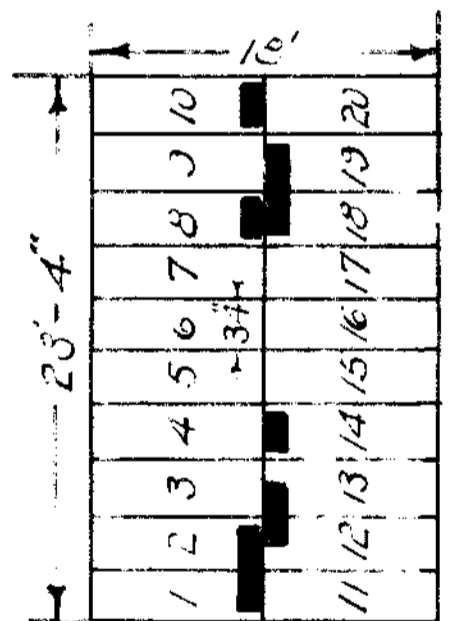
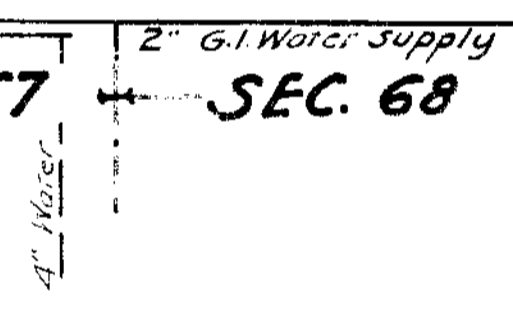
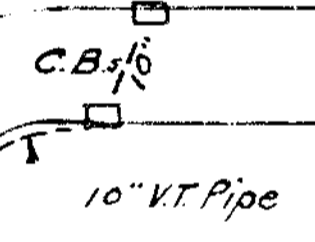
SEC. 70

SEC. 67

SEC. 68

ST. MATTHEW AVE.

PROPERTY
OF
THE TRUSTEES OF ST. PATRICKS CATHEDRAL
IN THE
CITY OF NEW YORK
N.Y. OFFICE - 29 EAST 50TH ST.



Charles A. Brady
Managing Director

Russell E. Fisher
Superintendent

Harry J. Hamilton
Engineer

S.T. L'Amoreux
Chief Cemetery Clerk

CALVARY CEMETERY
ST DOMITILLA DIVISION
SECTION 69
SINGLE GRAVE SECTION

Scale: 1" = 30'
Sep 1st, 1955