

Note: The plots in this section are 6 ft. in width, 5 ft. of which is to be of concrete.

Note: Plots are numbered from 1 to 63, and are divided into single graves 3'x2' with one foot of space intervening.

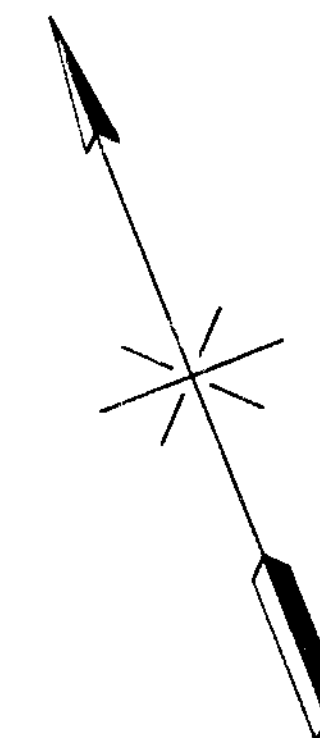
PROPERTY
 OF
 THE TRUSTEES OF ST. PATRICK'S CATHEDRAL
 IN
 THE CITY OF NEW YORK

Alfred C. Dineen
 Managing Director

J. J. Cunningham
 Superintendent

Frank J. Sullivan
 Engineer

Henry J. ...
 Asst. Engineer



**CALVARY CEMETERY
 ST. DOMITILLA DIVISION
 SECTION 65
 SINGLE GRAVE SECTION**



September, 1929.

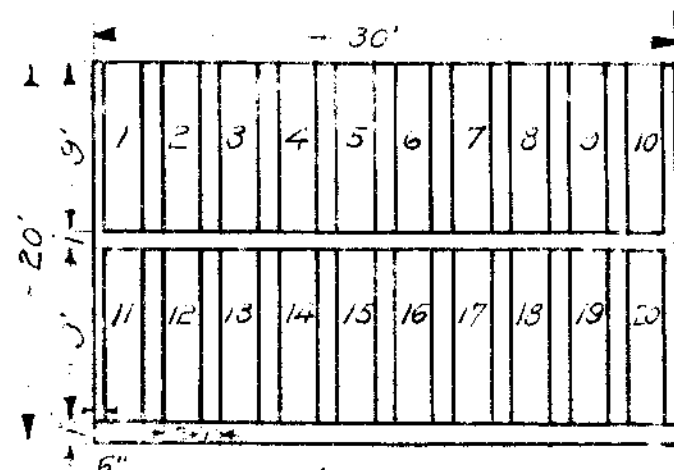
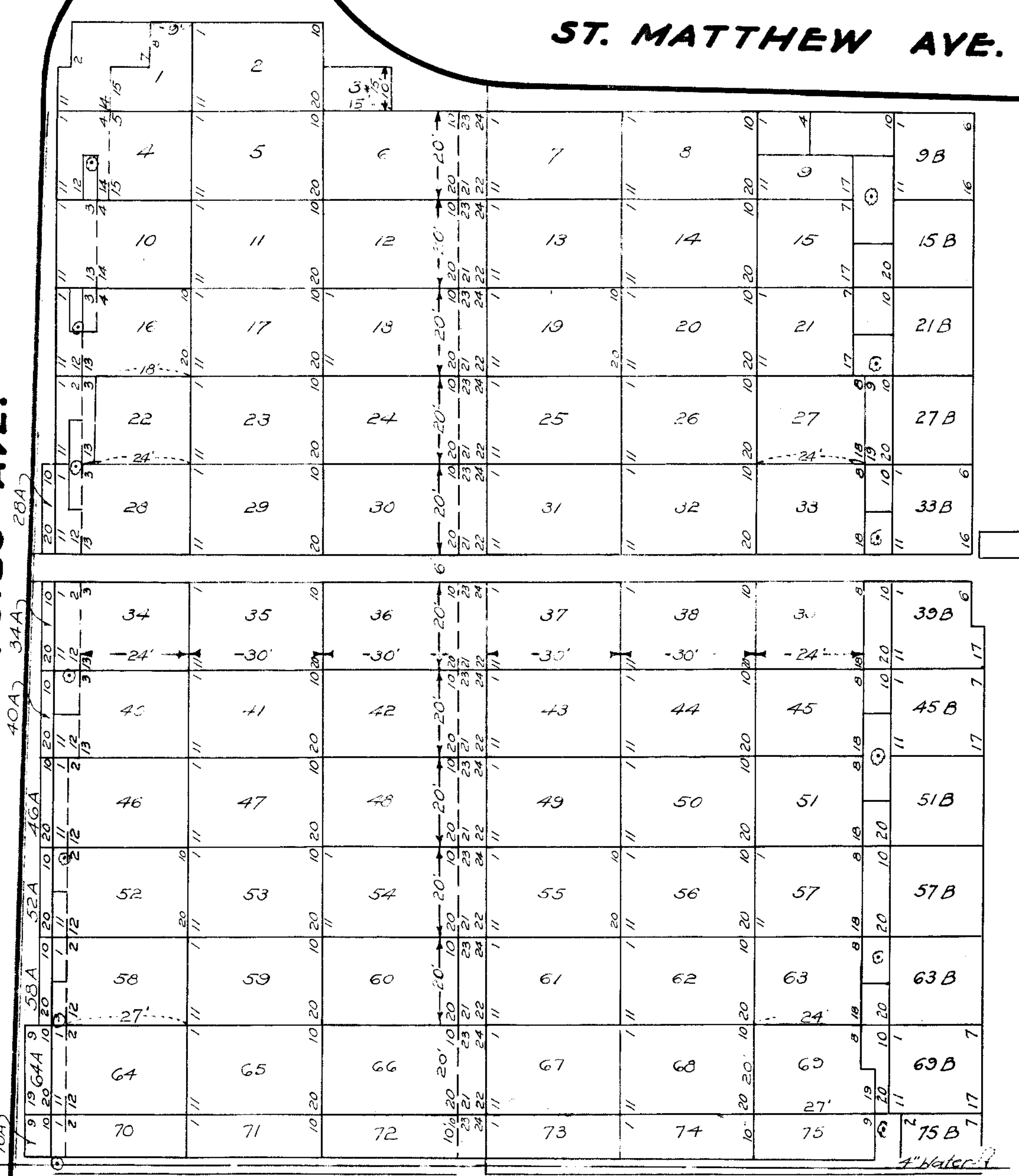
Corrected & brought up to date
 May - 1935.
 H.T. Manna.

Revised: Jan. 1951 - Y.L. ANDREWS

Revised: Jan. 1961 - H.J.H

ST. ALOYSIUS AVE.

ST. MATTHEW AVE.



Sec. 59