

PROPERTY
OF
THE TRUSTEES OF ST. PATRICK'S CATHEDRAL
IN
THE CITY OF NEW YORK

Robert C. Ainsworth
Managing Director

J. L. Cunningham
Superintendent

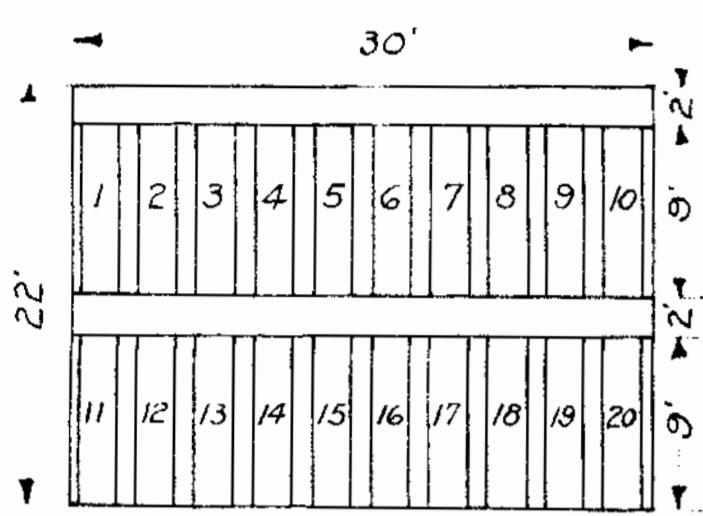
Ernest D. Griffin
Engineer

Harry J. Hanlon
Asst. Engineer

New York Office - 24 East 52nd St.

Note: Plots are numbered from 1 to 110,
divided into single graves, 3' x 2',
with one foot of space intervening

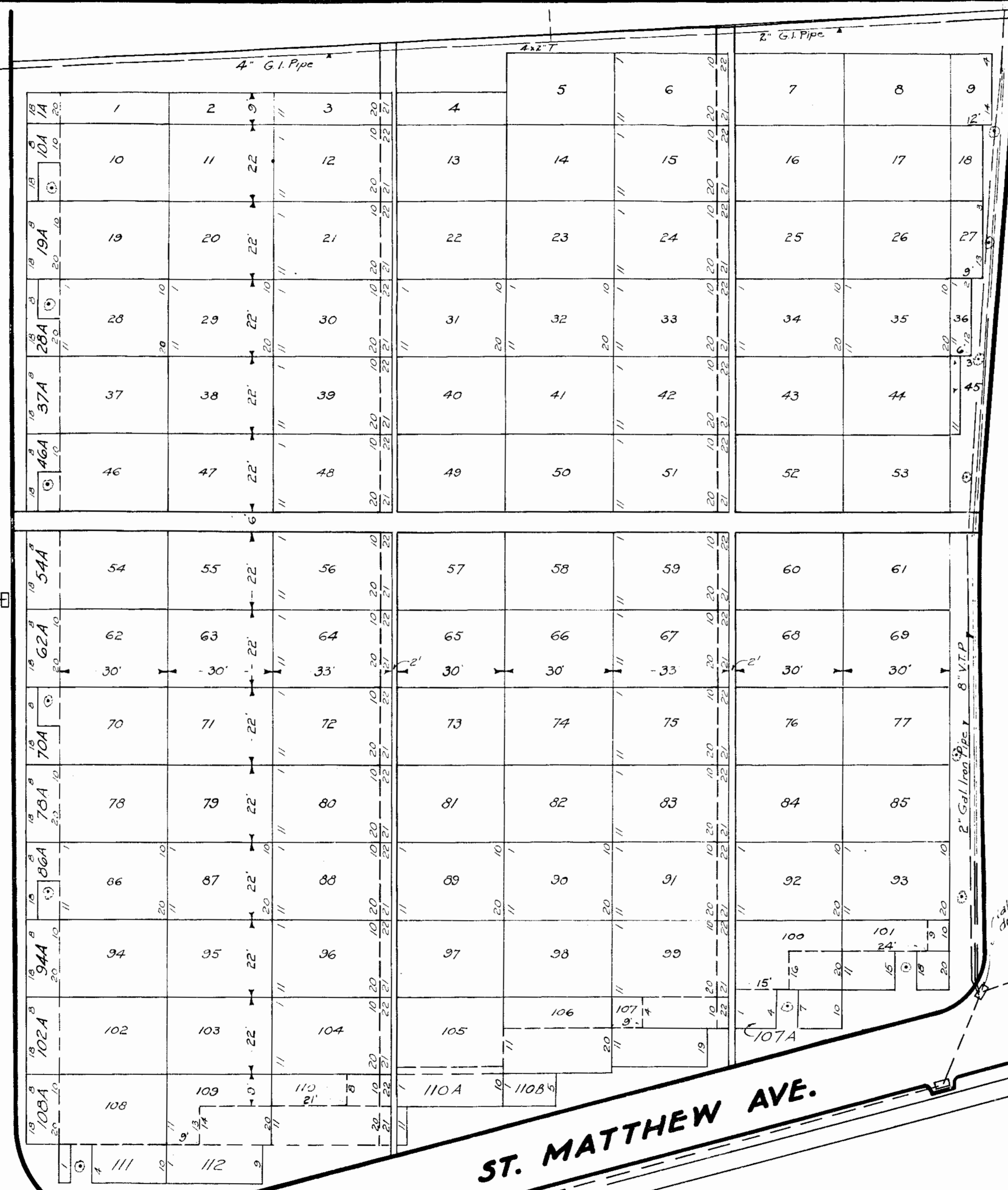
Notes: Paths in this section are to be of
concrete, but not for entire width.
In 6 ft. path, 5 ft. is to be of con-
crete, and in 5 ft. paths, 4 ft. is
to be of concrete allowing 6 ins.
clear on each side.



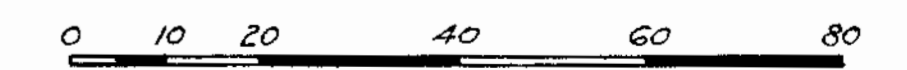
ST. MARK AVE.

ST. ANTHONY AVE.

ST. MATTHEW AVE.



ST. DOMITILLA DIVISION
CALVARY CEMETERY
SECTION 61
SINGLE GRAVE SECTION



April, 1928.

