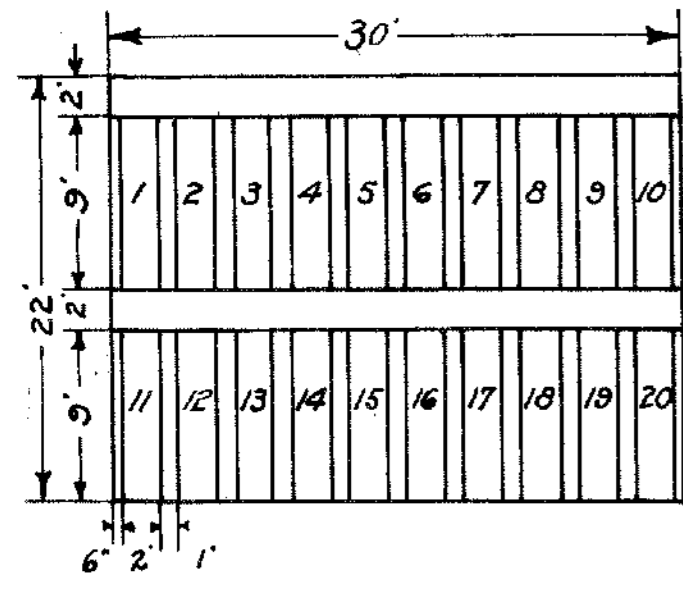
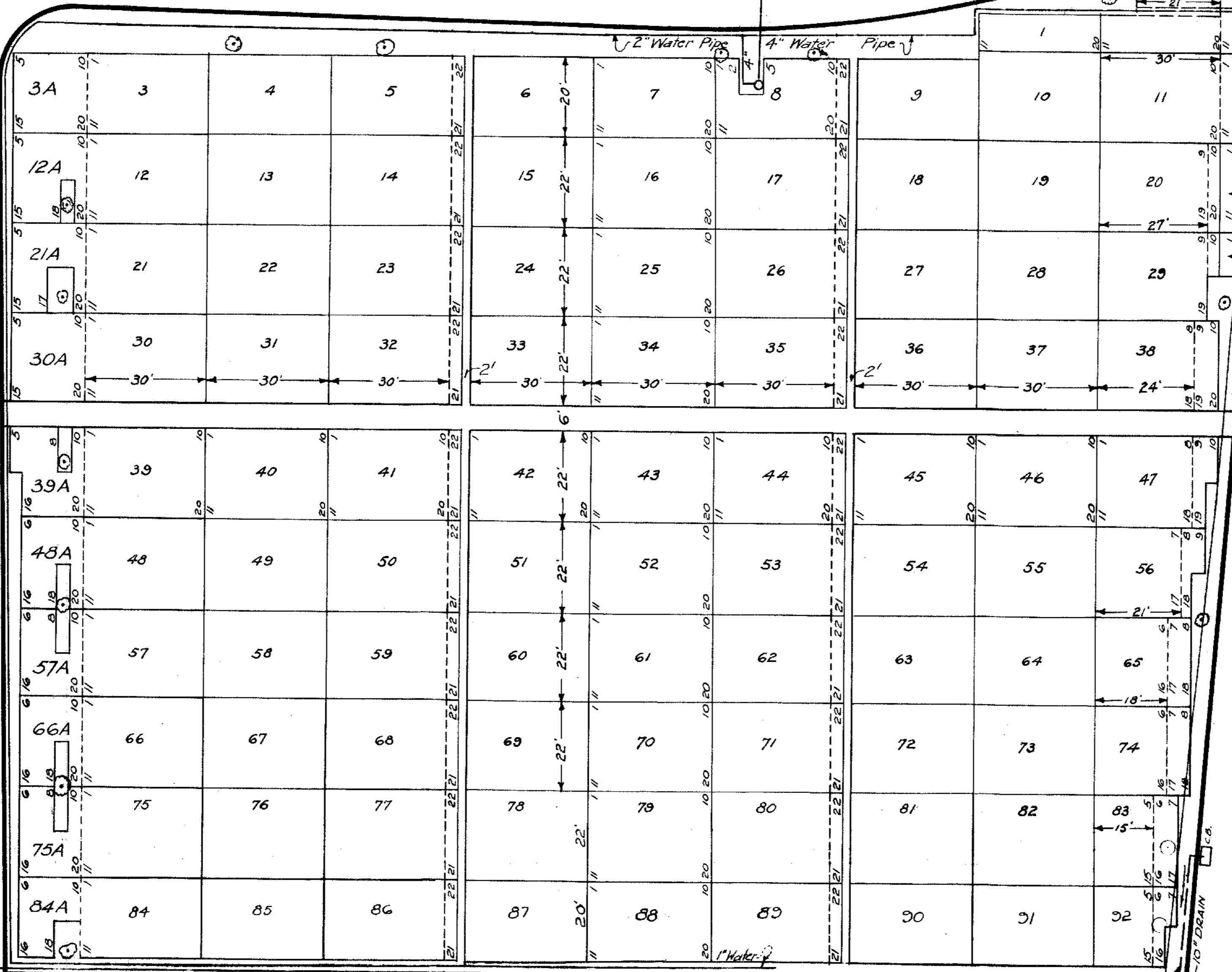


64

ST. MATTHEW AVE.

ST. LUKE AVE.

ST. MARK AVE.



Note:
Plots are numbered from 1 to 83, divided into single graves 9x2 with one foot of space intervening.

Note:
Paths in this section are to be of concrete, but not for entire width. In 5 ft. paths, 4 ft. is to be of concrete, allowing 6 ins. clear on each side. In 6 ft. paths, concrete is to be 5 ft. wide, allowing 6 ins. clear on each side.

Wm. J. Street
Managing Director

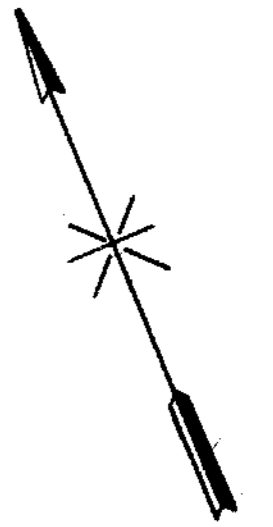
J. J. Cummings
Supt

Donald S. Griffin
Engineer

Harry Hanlon
Asst Engineer

New York Office - 24 East 52nd St.

58



ST. DOMITILLA DIVISION
CALVARY CEMETERY
SECTION 59
SINGLE GRAVE SECTION



April, 1927.

Corrected & brought up to date
June - 1933.

H.T. Manna.
REVISED - JULY, 1951.
V.L. ANDREWS.

62