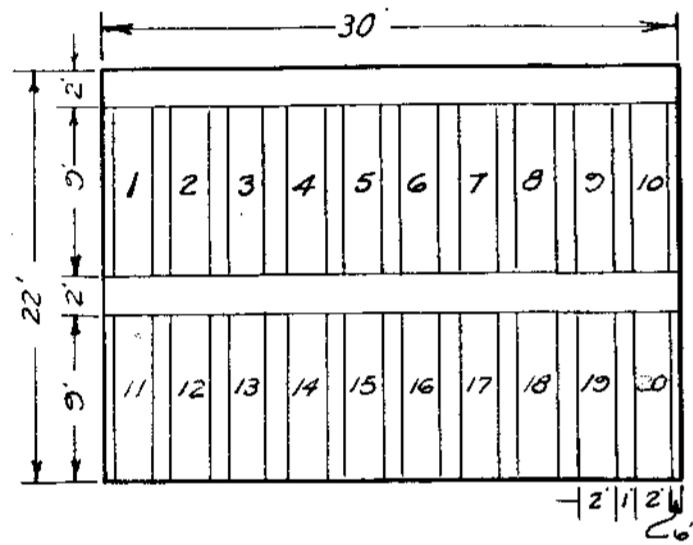


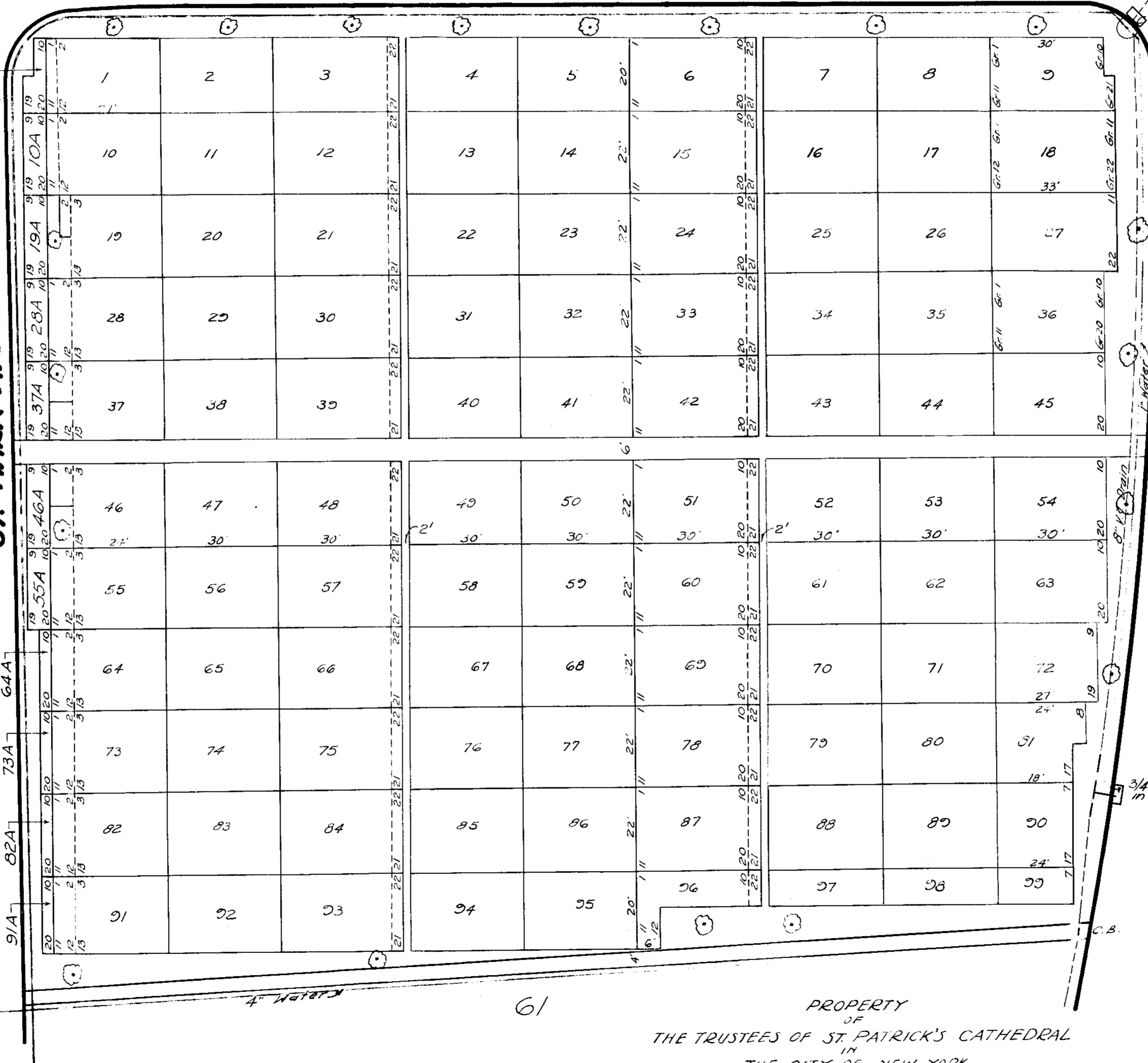
ST. MATTHEW AVENUE



Note:
Plots are numbered from 1 to 110, divided into single graves, 9'x2' with one foot of space intervening.

59

ST. MARK AVENUE



ST. ANTHONY AVENUE

Alfred Owen
Maping Director

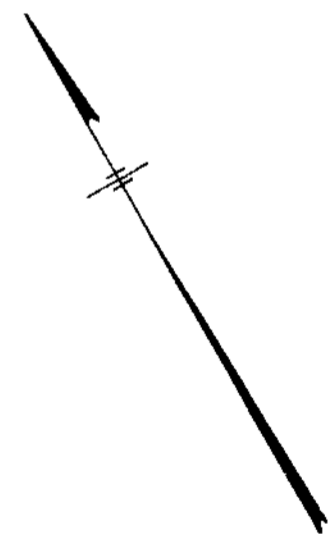
Superintendent

J.T. Kearney
Chief Cemetery Clerk

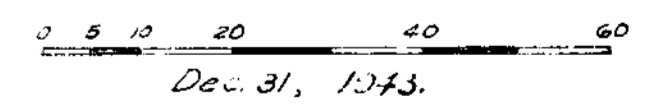
A.J. Menna
Ass. Engineer

New York Office - 24 East 52nd Street.

57



**CALVARY CEMETERY
SECTION 58
SINGLE GRAVE SECTION**



This map supersedes former map of this section, dated, Dec. 1926.

61
PROPERTY
OF
THE TRUSTEES OF ST. PATRICK'S CATHEDRAL
IN
THE CITY OF NEW YORK