

REVIEW AVENUE

HOWARD STREET

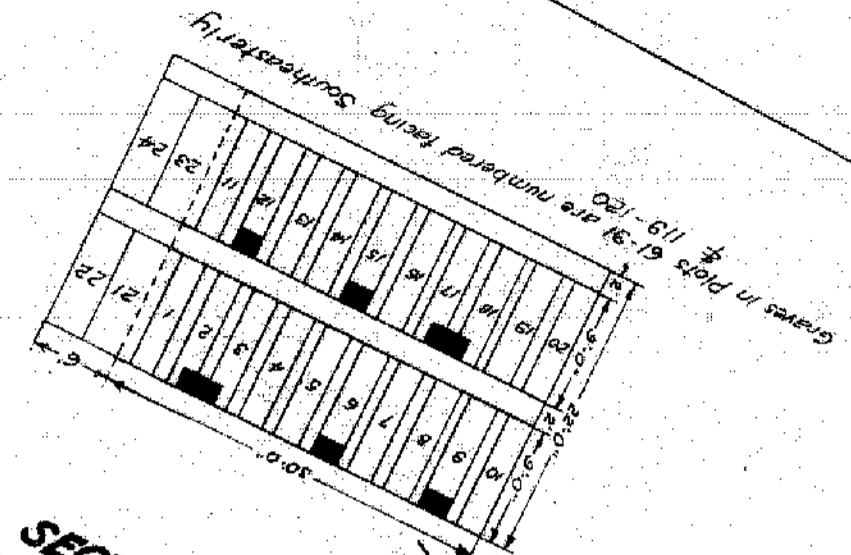
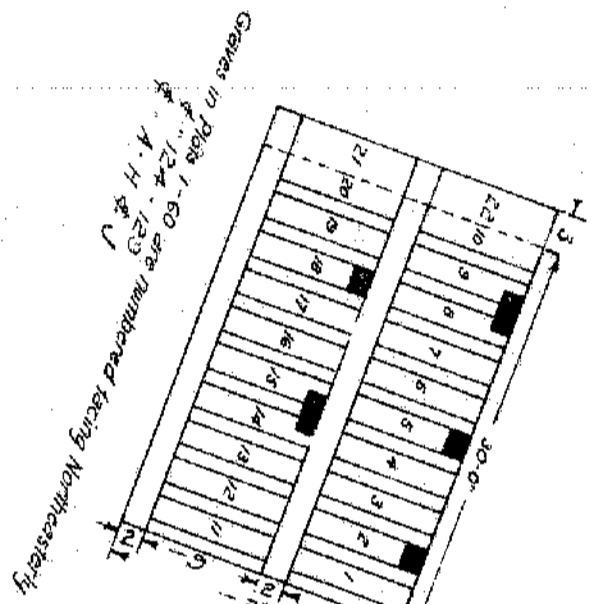
PROPERTY OF THE TRUSTEES OF ST. PATRICK'S CATHEDRAL IN THE CITY OF NEW YORK

W. J. Johnson
Managing Director

Edward Griffin
Engineer

Henry Hamilton
Asst. Engineer

N.Y. Office - 24 East 52nd St



SECTION 51
E. St. Martin Supply, Plot 1

ST. THOMAS AVENUE

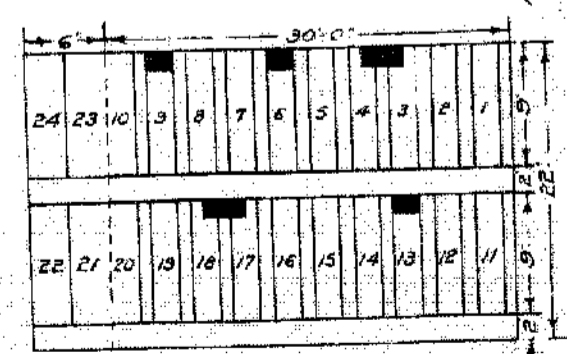
SECTION 52
ST. THOMAS AVENUE

SECTION 53

SECTION 54

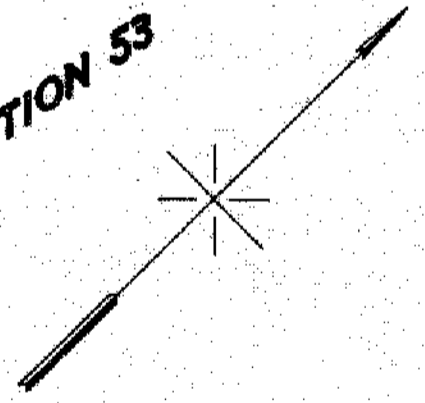
Revised May, 1928 to show additional graves and Plots A-K, and 116
Revised January, 1946 Plots 117 to 123
Revised May, 1932 to include graves 21-22-23 & 24 as shown

Note: Plots are numbered from 1 to 123 & lettered A to H, J & K
Divided into single graves
3' x 2' with one foot of space
intervening.



Graves in Plots 92-118 are numbered facing Northwestwardly & 121-123

Locker House



ST. CALIXTUS DIVISION
CALVARY CEMETERY
SECTION 56
SINGLE GRAVE SECTION

Scale: 1" = 0'
0 20 40 60
January, 1921

SEC 56
ALL 36' x 9 FT