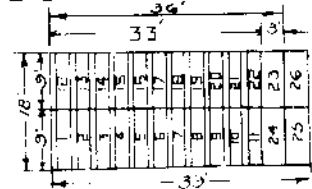


Section 55

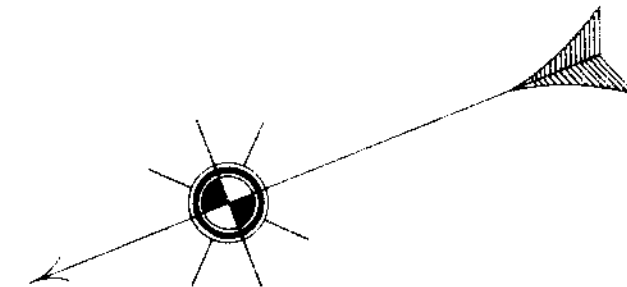
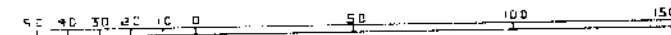
NOTE. VERTICAL COLUMNS CALLED RANGES ARE NUMBERED 1 TO 31
 RANGES ARE DIVIDED INTO PLOTS LETTERED A TO D
 FULL PLOTS MEASURE 33'x18'-CONTAINING 22 GRAVES
 EACH GRAVE 9'x2' WITH ONE FOOT SPACE INTERVENING AS
 IN THE FOLLOWING DIAGRAM



*Revised Oct 1946 to include
 Graves Numbered 23 & 24
 Revised Nov 1949 to include
 Ranges 25 & 26 in Ranges
 6, 12 & 18 which are 33' wide.*

NOTE. NO ENCLOSURES OR MOUNDS PERMITTED
 THE BURIAL PRIVILEGES ARE DEEDED AT THE RATE
 OF \$155 PER GRAVE
 PRICES ARE SUBJECT TO CHANGE WITHOUT NOTICE

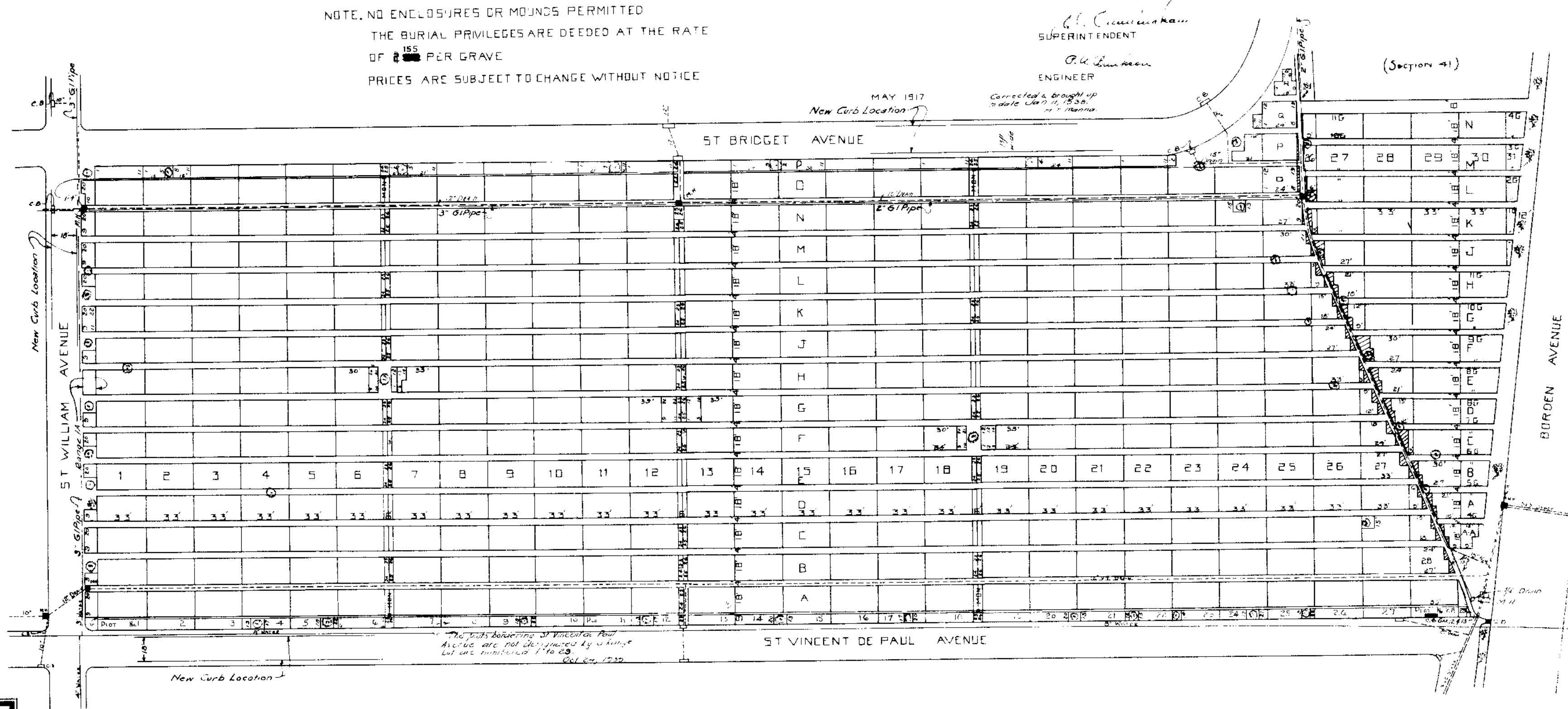
SCALE OF FEET



George C. Edwards
 MANAGING DIRECTOR

G. C. Ciminichian
 SUPERINTENDENT

P. U. Luncheon
 ENGINEER



*The plots bordering St. Vincent de Paul
 Avenue are not designated by a letter
 but are numbered 1 to 29
 Oct 24, 1932*

*MAY 1917
 Corrected & brought up
 to date Jan 11, 1930.
 P. U. Luncheon*

(Section 41)