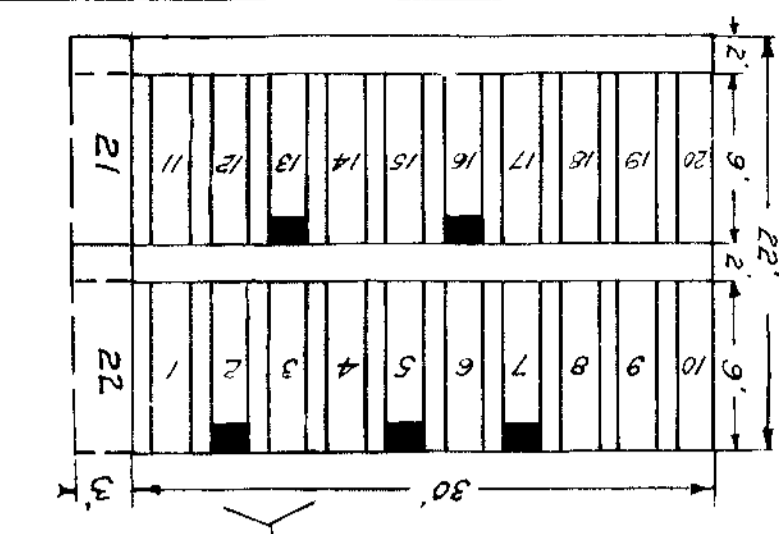
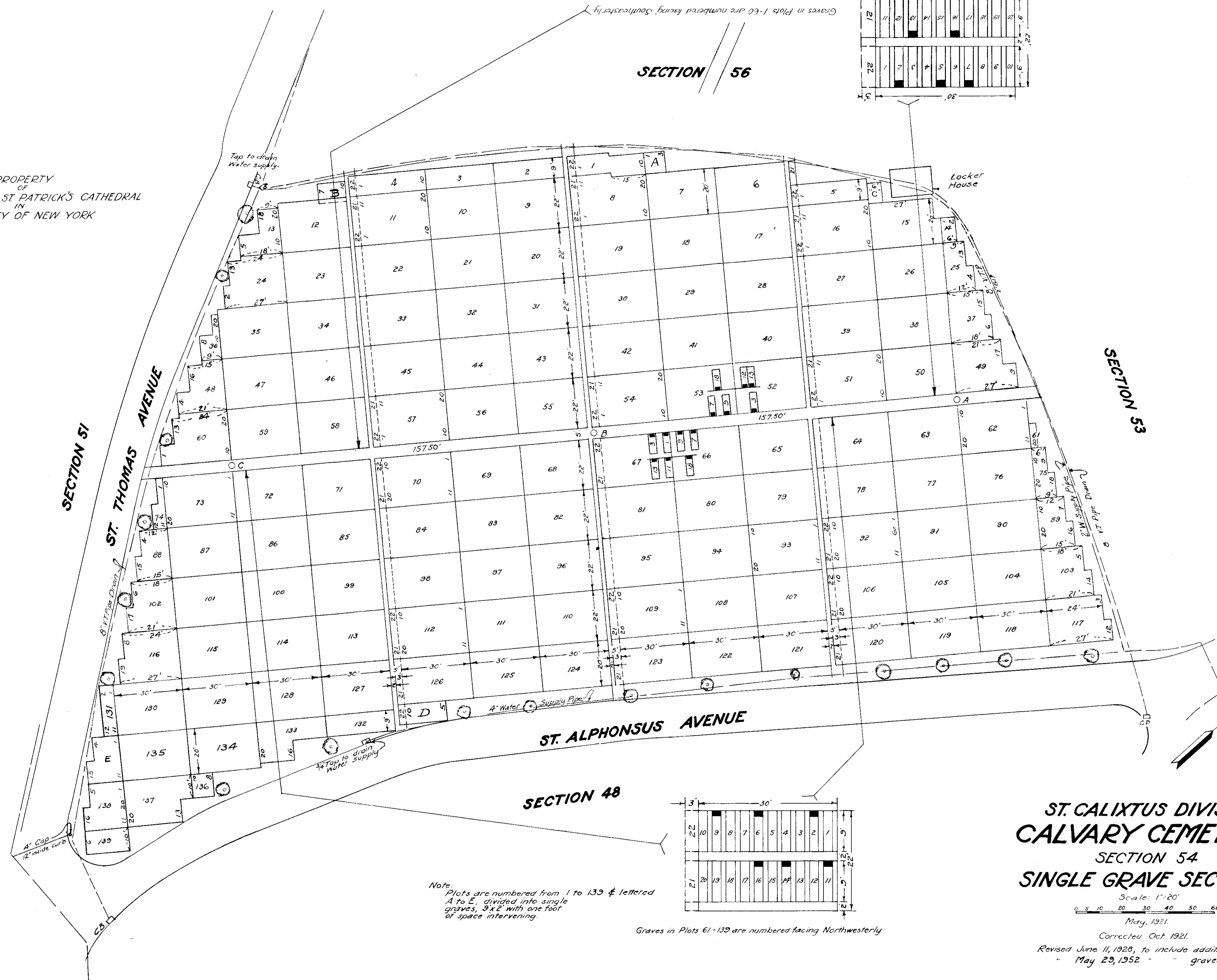


SECTION 56



PROPERTY OF
THE TRUSTEES OF ST. PATRICK'S CATHEDRAL
IN
THE CITY OF NEW YORK



Wm. J. Hanlon
Managing Director
Charles Schiller
Engineer
Nancy J. Hanlon
Asst. Engineer
N.Y. Office - 24 East 52nd St.

ST. CALIXTUS DIVISION
CALVARY CEMETERY
SECTION 54
SINGLE GRAVE SECTION

Scale: 1"=20'
0 5 10 20 30 40 50 60
May, 1921.

Corrected Oct. 1921.
Revised June 11, 1928, to include additional graves.
May 29, 1952 - graves 21 & 22

Note:
Plots are numbered from 1 to 139 & lettered
A to E, divided into single
graves, 9' x 2' with one foot
of space intervening.

Graves in Plots 61-139 are numbered facing Northwesterly

