

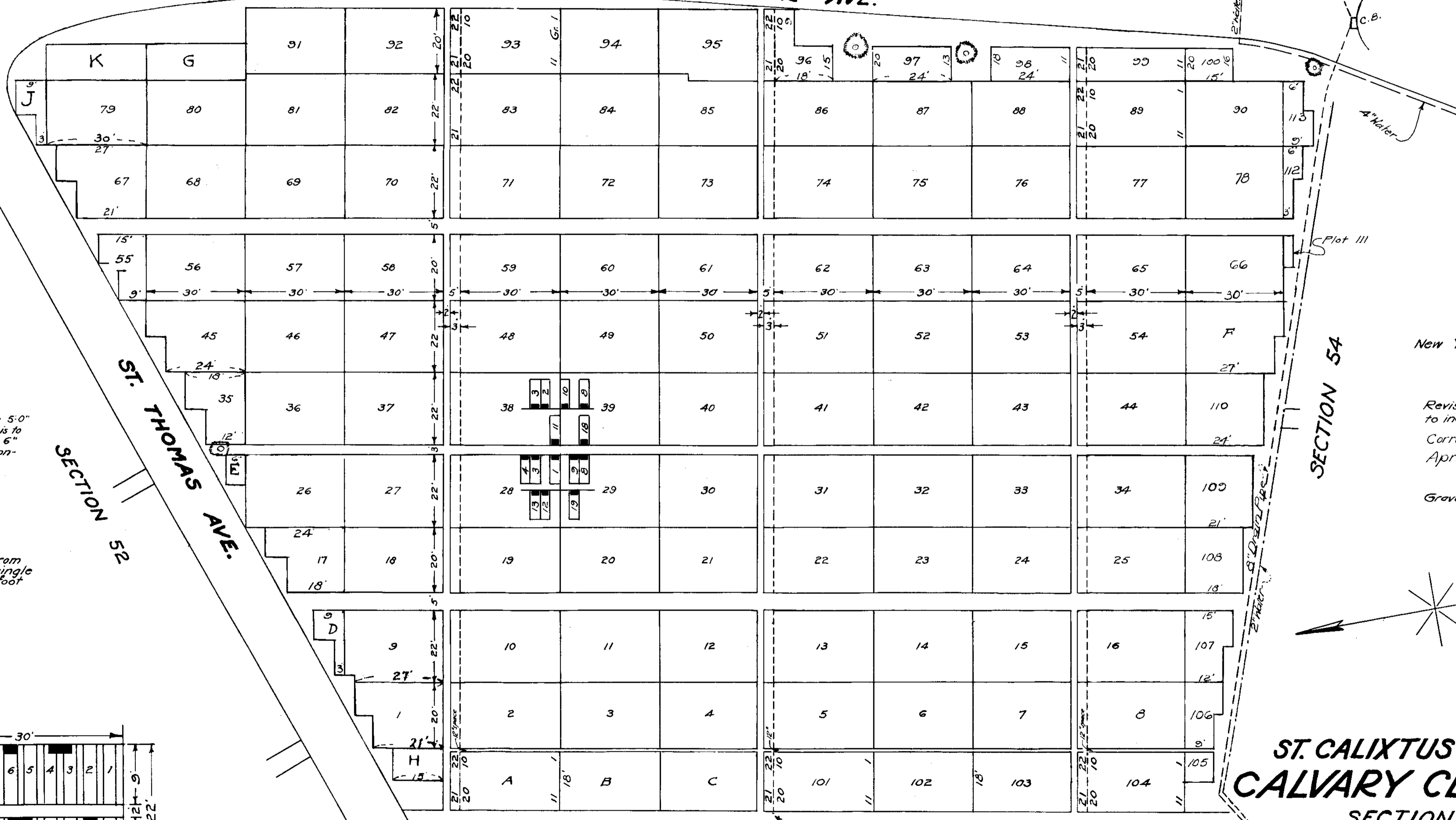
ST. ROSE AVE.

SECTION 49

PROPERTY OF  
THE TRUSTEES OF ST. PATRICK'S CATHEDRAL  
IN  
THE CITY OF NEW YORK

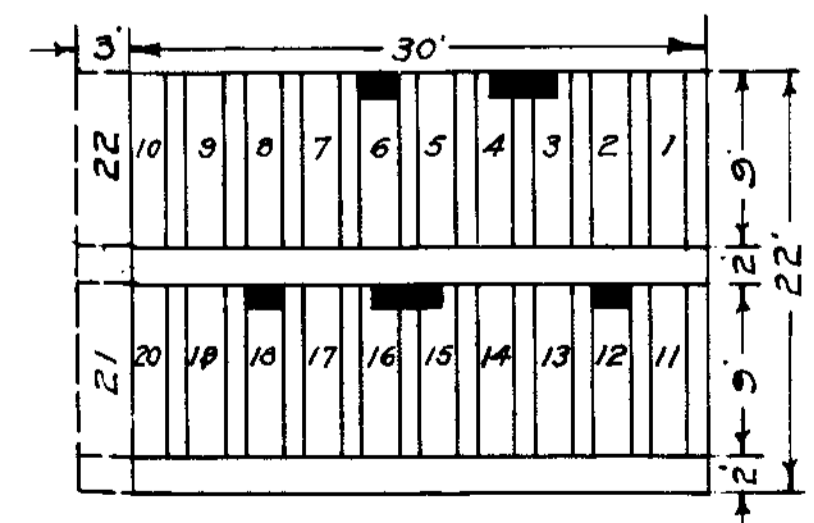
ST. PETER AVE.

To Office



Note:  
Paths in this section are 5'-0" in width, 4'-0" of which is to be of concrete, allowing 6" on each side, between concrete and plot lines.

Note:  
Plots are numbered from 1 to 95, divided into single graves 9x2 with one foot of space intervening.



*Wm J. Stroman*  
Managing Director

*Charles J. Shiffen*  
Engineer

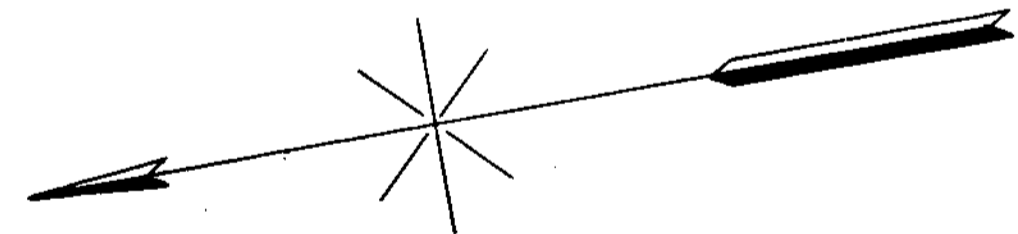
*Harry Handen*  
Asst Engineer

New York Office - 24 East 52nd St.

Revised, September, 1928,  
to include additional graves.  
Corrected & brought up to date  
April, 1935.

L.T. Manned.

Graves 21 & 22 added, May, 1952.



**ST. CALIXTUS DIVISION  
CALVARY CEMETERY**  
SECTION 53  
SINGLE GRAVE SECTION

Scale - 1"-20'

March, 1923.

SECTION 56