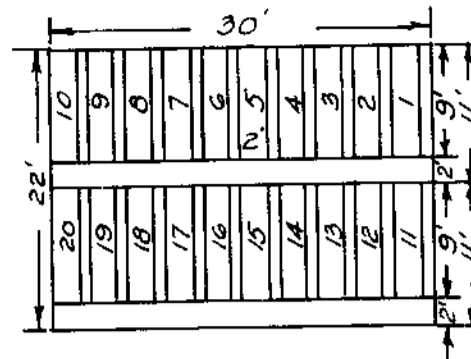
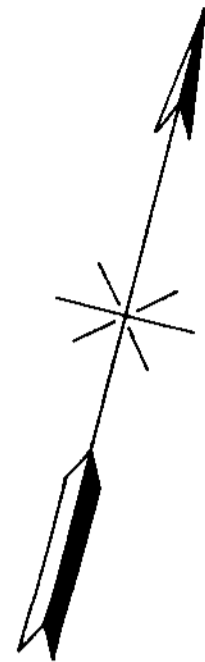


ST. CALIXTUS DIVISION CALVARY CEMETERY SECTION 52 SINGLE GRAVE SECTION

Scale: 1" = 30'
0 30 60 90

June 18, 1920.



PROPERTY
OF
THE TRUSTEES OF ST. PATRICK'S CATHEDRAL
IN
THE CITY OF NEW YORK

STAR AVE.

BRADLEY AVE.

W. J. Stewart
Managing Director

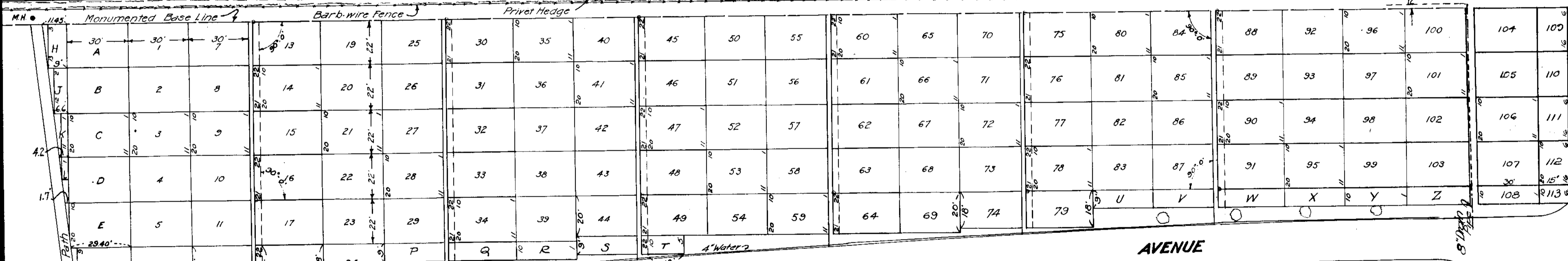
Charles Griffin
Engineer

Harry J. Haulen
Asst. Engr

N.Y. Office - 24 East 52nd St

HOWARD

STREET



Revised Feb. 1928 to
show additional graves

SECTION 56

Note: Plots are numbered from 1 to 103, and lettered from A to Z
Divided into single graves
9' x 2' with one foot of space
intervening.

Corrected & brought up to date
Feb., 1932. H. T. Manna.

SECTION 53

ST. CORNELIUS AVE.

ST. PETER

AVENUE

ST. ROSE