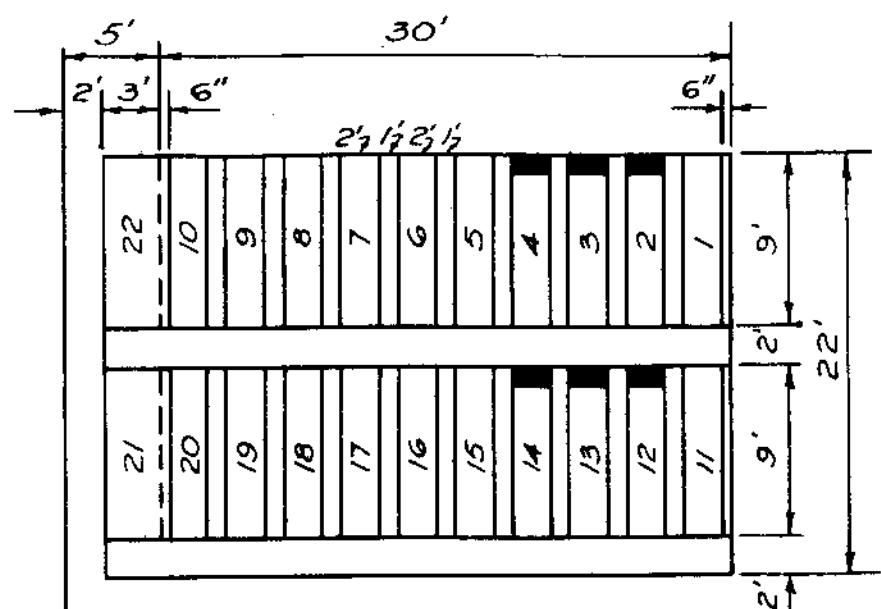
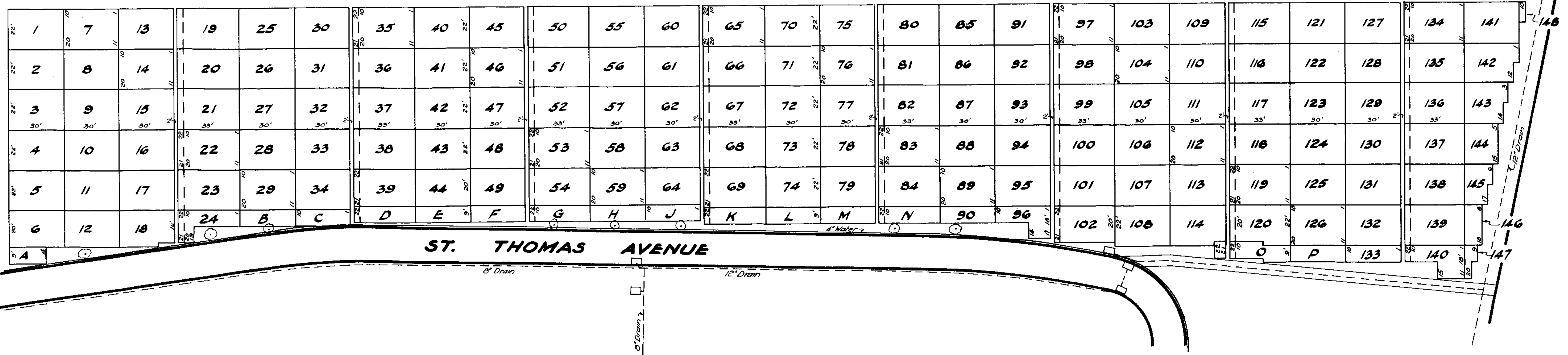


PROPERTY
OF THE
TRUSTEES OF ST. PATRICK'S CATHEDRAL
IN THE
CITY OF NEW YORK

REVIEW AVE.



Plots are divided into single graves as indicated in the above diagram.

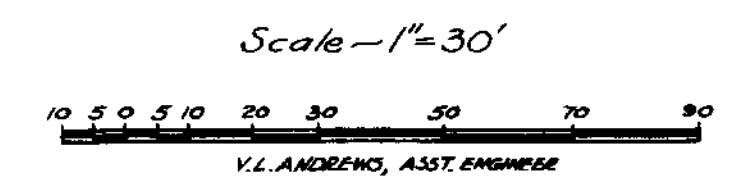
Geo. Charles A. Brad.
Managing Director

Russell E. Ficks.
Superintendent

Harry J. Naula.
Engineer

John T. Kearney.
Chief Cemetery Clerk

**SECTION 51
CALVARY CEMETERY
ST. CALIXTUS DIVISION**



ORIGINAL MAP DATED APRIL, 1920.

REVISIONS
FEB. 1928. H.J.H.
JULY. 1952. V.L.A.