

Graves numbered from 1 to 16 in Ranges measure 2x8'
 Graves numbered 17 & over " 3x9'
 *Graves numbered from 3 to 10 in Avenues " 2x8'
 Graves numbered 11 & over " 3x9'
 * Graves deeded later than 1953 changed to 32" in width
 (See standard at extreme right)

George C. Eichel
 Managing Director

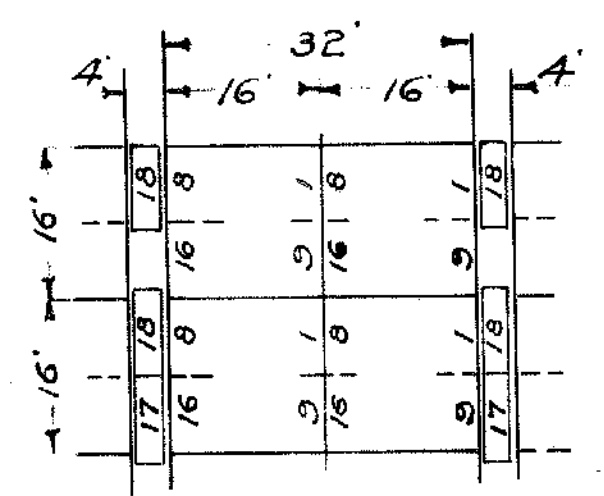
Russell E. Ficks
 Superintendent

Nancy J. Haulor
 Engineer

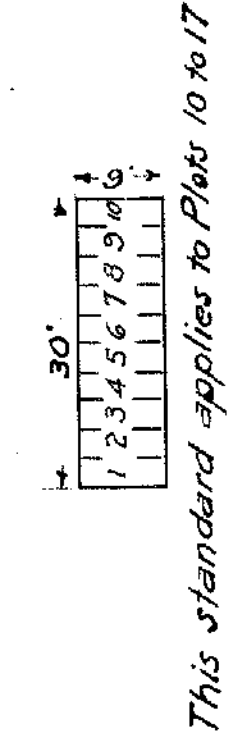
John T. Kearney
 Chief Cemetery Clerk

Note: The following Plots are intended for Underground Vault Sites only. These adjoining Section 45 are to have their monuments, if any, face the Chapel. They are:

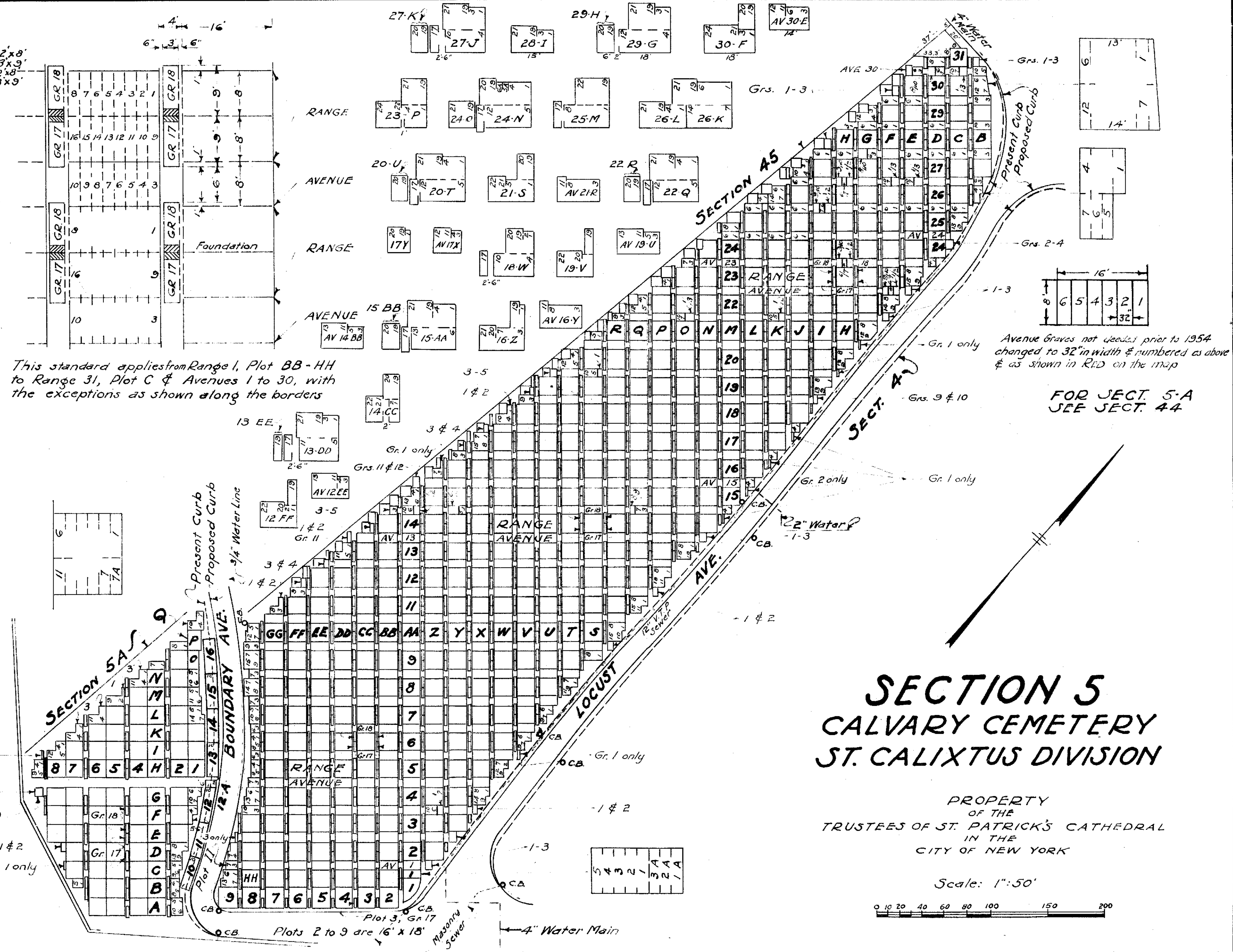
Ave. 24	J K L & M
25	C D E F G J K
26	J
27	C D E H & I (eye)
28	D F & G
29	E & F



This standard applies to Ranges A-Q, Plots 1-9 with exceptions as shown on the plan.



This standard applies to Plots 10 to 17



This standard applies from Range I, Plot BB-HH to Range 31, Plot C & Avenues 1 to 30, with the exceptions as shown along the borders

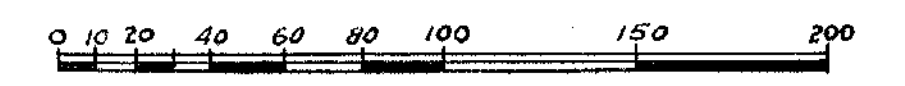
Avenue Graves not deeded prior to 1954 changed to 32" in width & numbered as above & as shown in RED on the map

FOR SECT. 5-A SEE SECT. 44

SECTION 5 CALVARY CEMETERY ST. CALIXTUS DIVISION

PROPERTY OF THE TRUSTEES OF ST. PATRICK'S CATHEDRAL IN THE CITY OF NEW YORK

Scale: 1"=50'



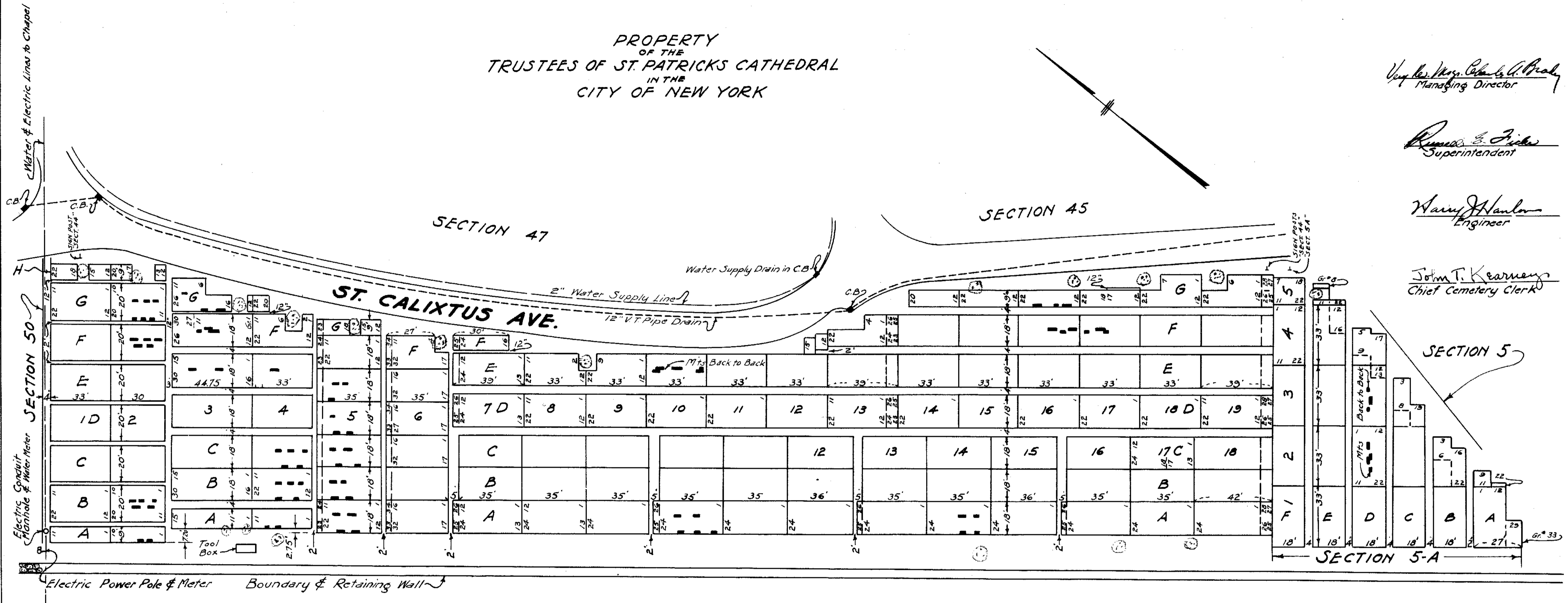
PROPERTY
OF THE
TRUSTEES OF ST. PATRICKS CATHEDRAL
IN THE
CITY OF NEW YORK

Very Rev. Mons. Charles A. Brady
Managing Director

James E. Fisher
Superintendent

Harry Hanlon
Engineer

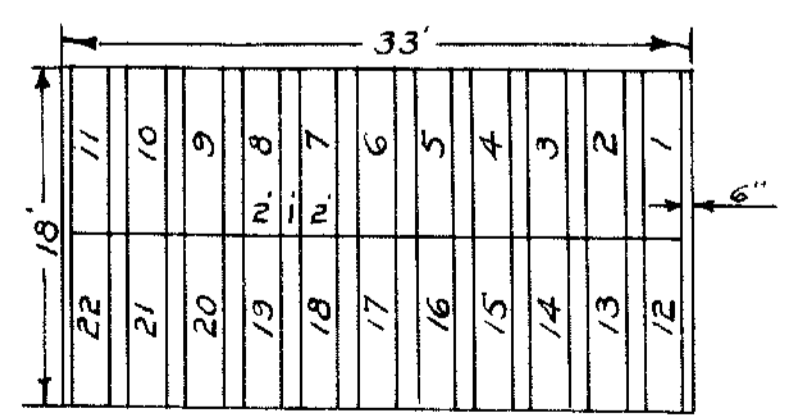
John T. Kearney
Chief Cemetery Clerk



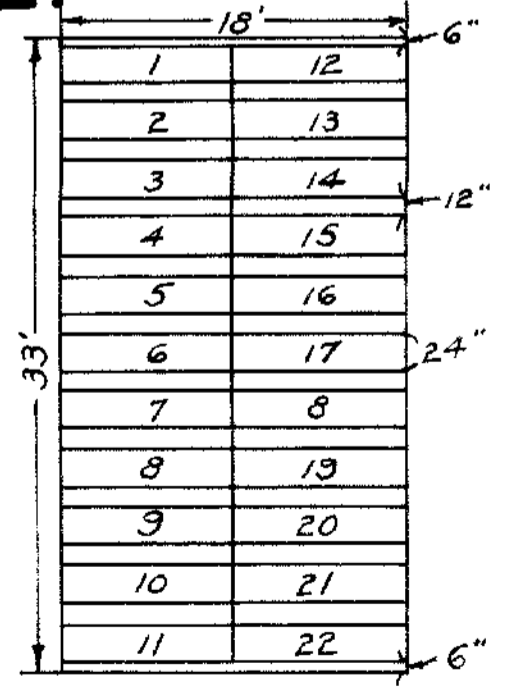
The following Plots are reserved as follows:
 1 & 2 G & H: Priests NOT of N.Y. Diocese.
 3-B to F & 4 B to E: St Joseph Maronite.
 5-A to F: Syrian Reservation.
 6-A: Destitute Seamen.
 6-B & C: St. Rose's Free Settlement
 6-D 1/16: Fathers of the Assumption
 6-E 1/8 & 1/24: Destitute Blind
 6-E 9/16 & 25/32: Sisters of the Divine Compassion
 6-F 1/32: Sisters of St. Dorothy

6D-17/27 are 24" wide with 12" between
 17-G-12/17 are 10 feet long

REVIEW AVE.

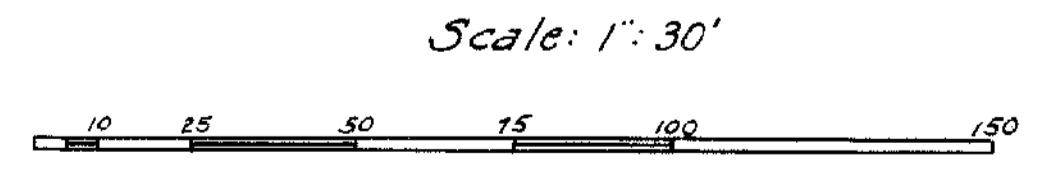


Standard for 33' Plots in Sect 44
 In Plots of other lengths, grave
 Nos. are indicated on the plan.



Standard for Sect. 5A

SECTIONS 44 & 5-A
 CALVARY CEMETERY
 ST. CALIXTUS DIVISION



ORIGINAL MAP DATED 1908

REVISIONS	
OCT. 1925	H.J.H.
APRIL, 1932	H.T.M.
JUNE, 1933	H.T.M.
JUNE, 1938	H.T.M.