

PROPERTY OF THE TRUSTEES OF ST. PATRICK'S CATHEDRAL IN THE CITY OF NEW YORK

SECTION 50

ST. THOMAS AVENUE

SECTION 54

ST. ALPHONSUS AVENUE

SECTION 47

ST. CALIXTUS AVENUE

ST. PETER AVENUE

SECTION 49

Managing Director

Engineer

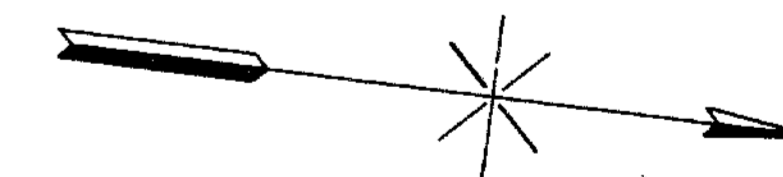
Asst. Engineer

N. Y. Office - 24 East 52nd St.

Revised June, 1928, to include additional graves.

Revised and brought up to date - June 3, 1933

H.T. Manna



ST. CALIXTUS DIVISION CALVARY CEMETERY SECTION 48 SINGLE GRAVE SECTION

Scale: 1" = 20'

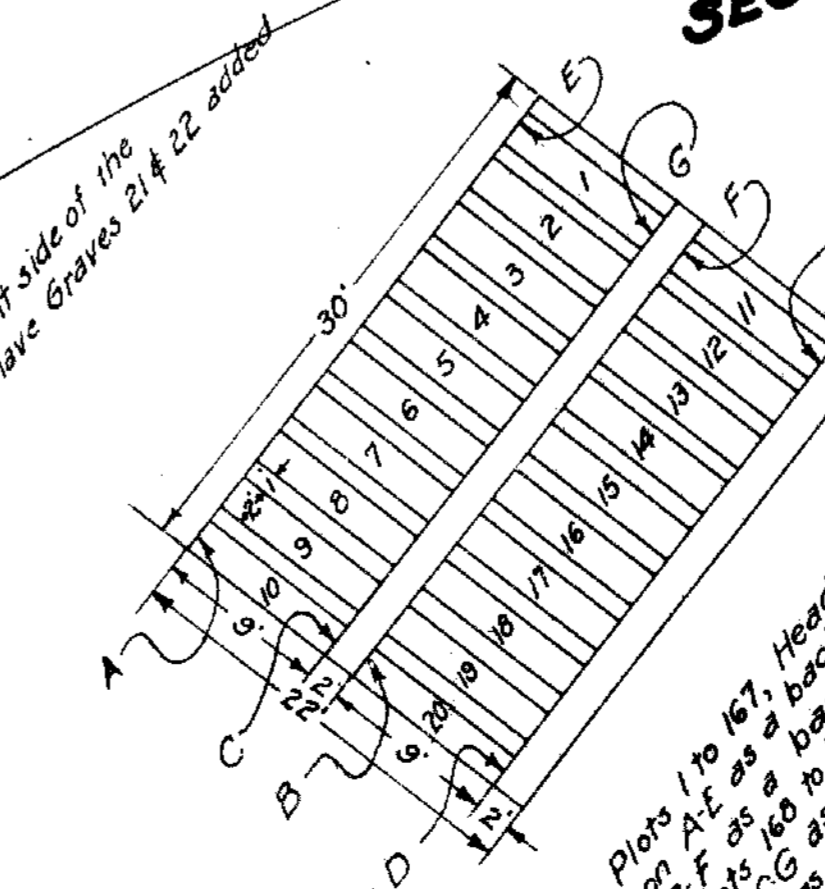
0 10 20 40 60

March, 1922.

Revised April 8th 1953: Graves 21 & 22 added as shown. H.H. Hanlon.

Note: Plots are numbered from 1 to 323, divided into single graves 3' x 2', with one foot of space intervening. Plots A to G added 1928. Plots 314 to 339 added 1933.

Note: The plots on the right side of this North & South paths have Graves 21 & 22 added.



In plots 1 to 157, headstones are to be set on the back line on 15' intervals, and on the front line on 30' intervals. The old headstones are to be set on the back line on 20' intervals.

