

PROPERTY OF THE TRUSTEES OF ST. PATRICK'S CATHEDRAL IN THE CITY OF NEW YORK

Folder No. 11
Folder No. 1
Map No. 603A

This section to be deeded in plots subject to the following restrictions:
To be graded and kept on lawn plan.
No enclosures permitted but corner posts marking boundary of plot may be set to the lawn level.
No overground or underground mausoleum may be erected and no trees or shrubs may be planted without the approval of the Managing Director.
All plots deeded to include a deposit in Permanent Plot Improvement fund for care of lawn or mausoleum.
Corner Posts to be of Granite 8" x 8" x 3'-0" deep with initial countersunk.
Headstones on Four Grave Plots may consist of two pieces not to exceed 3'-0" in height, base not to exceed two-thirds of the width of each grave holding.
In Eight Grave Plots, headstone not to exceed 6'-6" in height, nor base two-thirds of width of plot.
In Sixteen Grave Plots, headstone not to exceed 10'-0" in height, nor base two-thirds of width of plot.

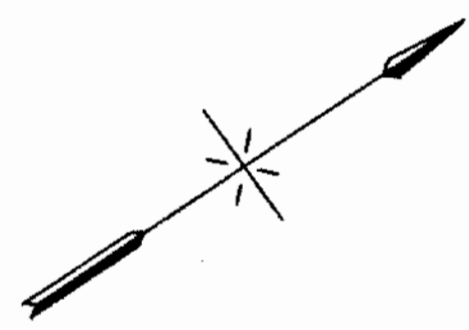
Horace W. Simon
Managing Director

Henry J. Vanlon
Acting Supt.

Arnold D. Griffin
Engineer

New York Office - 24 East 52nd St.

Note:
A sufficient deposit for the perpetual care of all monuments of six feet and over to be erected in this section, must be placed in the Plot Improvement fund at the time of giving contract for the erection of such monuments.



**ST. CALIXTUS DIVISION
CALVARY CEMETERY
SECTION 47
FOR
MAUSOLEUM SITES, PLOTS, ETC.**

Scale: 1" = 37.92'
February 1, 1936

THIS MAP SUPERCEDES MAP 603 DATED SEPT, 1920
REVISED NOV. 1958, CONVERTING 4 FT. PATHS INTO SINGLE GRAVES

ELECTRIC & WATER SUPPLY TO CHAPEL

SECTION 48

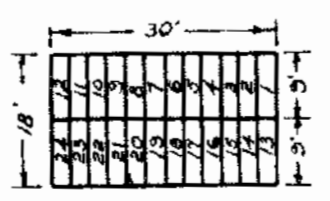
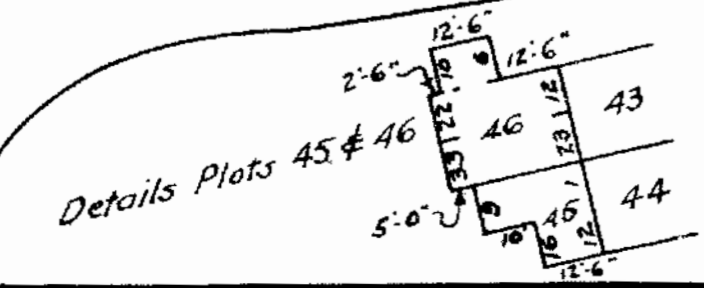
ST. CALIXTUS AVENUE

SECTION 44

THOMAS AVENUE

CARDINAL FARLEY AVENUE

SECTION 45



Graves 17 & 18 are 3 ft wide & adjoin 16 & 8 respectively

Graves 25 & 26, also 3 ft wide, adjoin 24 & 12 resp.

Note: The 20' x 18' standards shown in the plots enumerated above will determine the correct standard to apply to all 20' x 18' plots.

