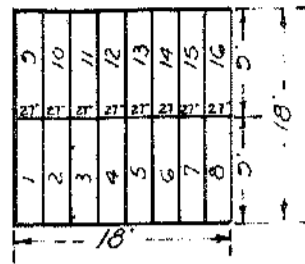
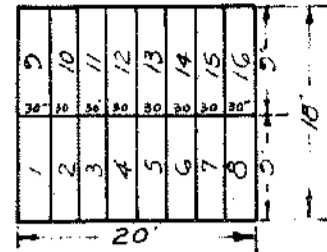


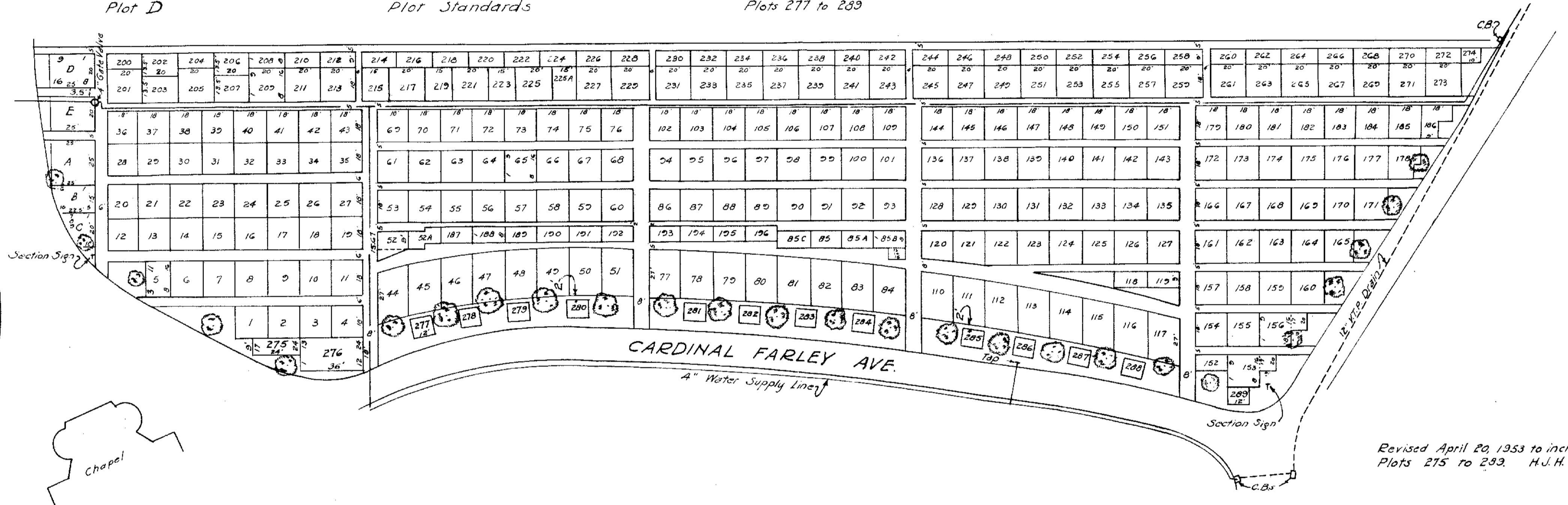
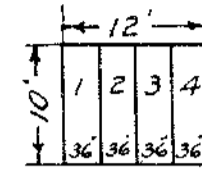
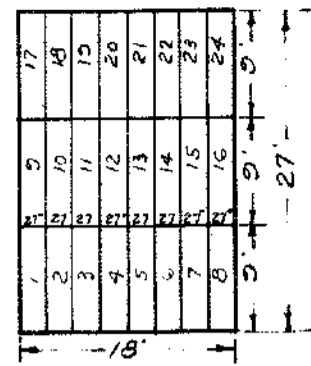
Plot D



Plot Standards



Plots 277 to 289



Revised April 20, 1933 to include Plots 275 to 293. H.J.H.

Alois J. Simon
Managing Director

Nancy J. Manlor
Superintendent

John T. Kearney
Chief Cemetery Clerk

H. F. Manna
Asst. Engineer

PROPERTY
OF THE
TRUSTEES OF ST. PATRICK'S CATHEDRAL
IN THE
CITY OF NEW YORK
New York Office - 24 East 52nd St.

SECTION 45
CALVARY CEMETERY
ST. CALIXTUS DIVISION

Scale: 1" = 40'
0 10 20 40 60 80 100 120 140
November 16, 1942

This map supersedes former map of this Section dated April-1933