

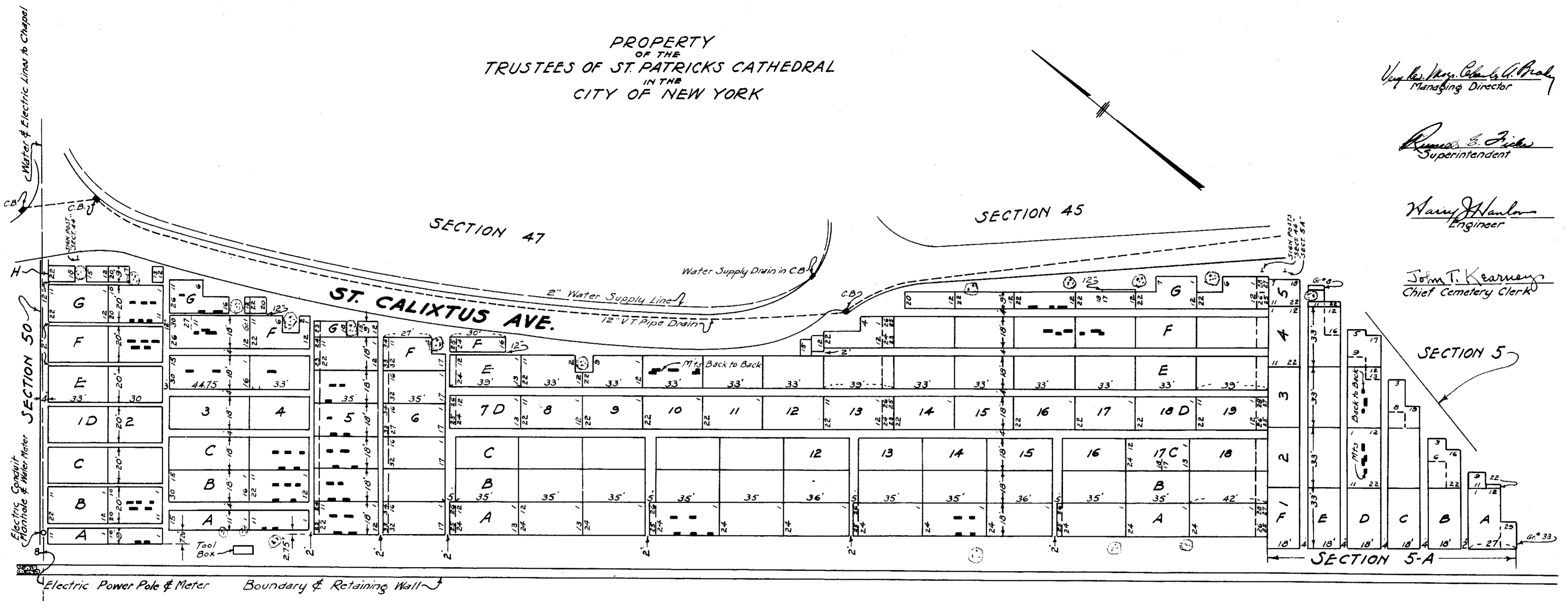
PROPERTY
OF THE
TRUSTEES OF ST. PATRICKS CATHEDRAL
IN THE
CITY OF NEW YORK

Very Rev. Mons. Charles A. Brady
Managing Director

James E. Fisher
Superintendent

Waring Hanlon
Engineer

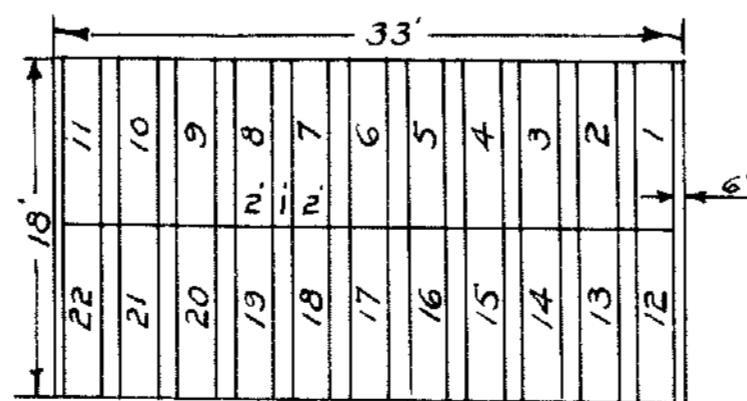
John T. Kearney
Chief Cemetery Clerk



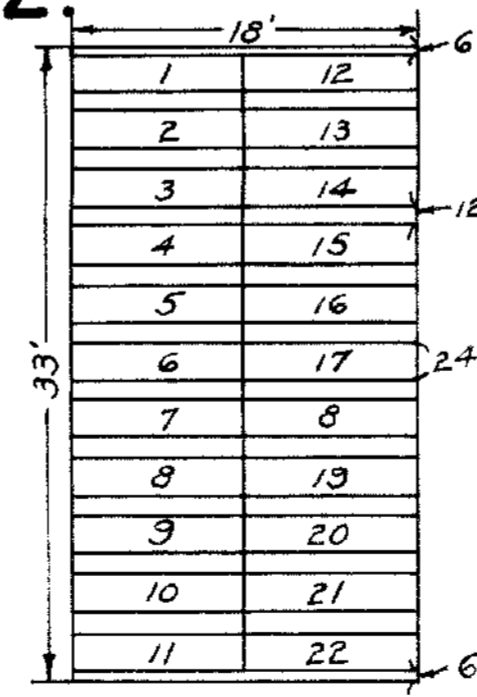
The following Plots are reserved as follows:
 1 & 2 G & H: Priests NOT of N.Y. Diocese.
 3-B to F & 4-B to E: St Joseph Maronite.
 5-A to F: Syrian Reservation.
 6-A: Destitute Seamen.
 6-B & C: St Rose's Free Settlement
 6-D 1/16: Fathers of the Assumption
 6-E 1/8 & 1/24: Destitute Blind
 6-E 9/16 & 25/32: Sisters of the Divine Compassion
 6-F 7/32: Sisters of St. Dorothy

6D-17/27 are 24" wide with 12" between
 17-G-12/17 are 10 feet long

REVIEW AVE.



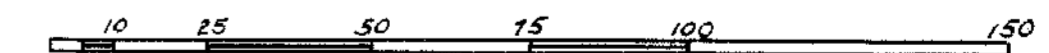
Standard for 33' Plots in Sect 44
 In Plots of other lengths, grave
 Nos. are indicated on the plan.



Standard for Sect 5A

SECTIONS 44 & 5-A
 CALVARY CEMETERY
 ST. CALIXTUS DIVISION

Scale: 1" = 30'



April 3rd, 1953

ORIGINAL MAP DATED 1908

REVISIONS	
OCT. 1925	H.J.H.
APRIL, 1932	H.T.M.
JUNE, 1933	H.T.M.
JUNE, 1938	H.T.M.