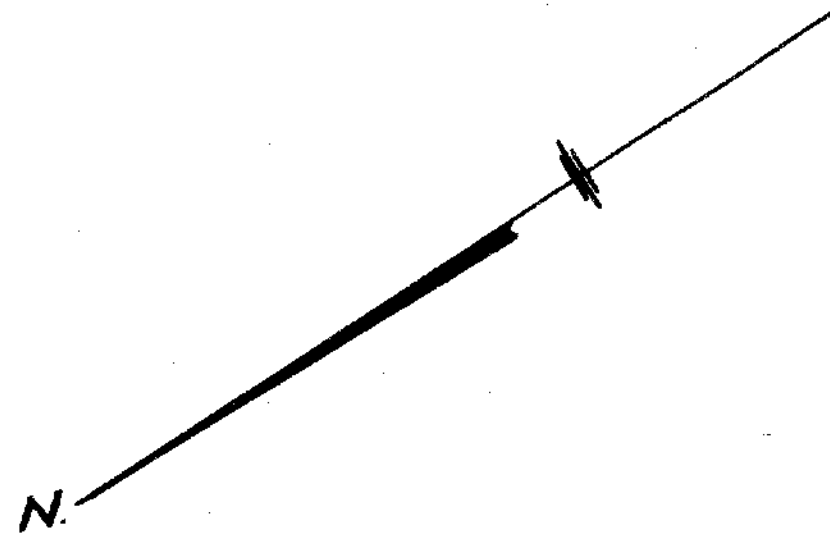


Revised August 3, 1928, to include graves on the borders partly contained in Ranges 1-A, 11-A and 16.

REVISED AND BROUGHT UP TO DATE OCT.-1946. VANDREWS

Revised & brought up to date Sept. 1949 H.J.H.



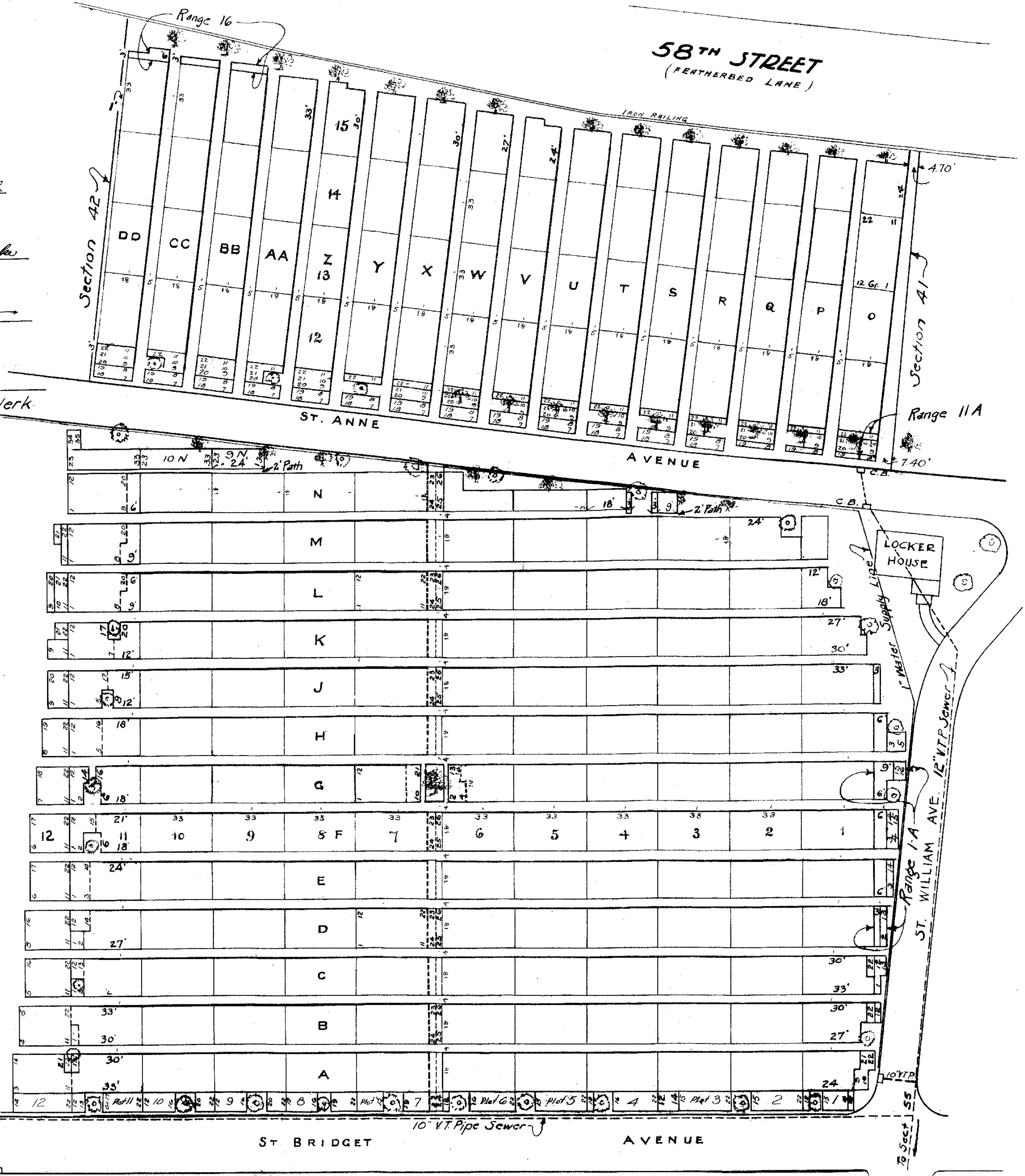
Section 45

George C. Emond
Managing Director

Russell E. Ficks
Superintendent

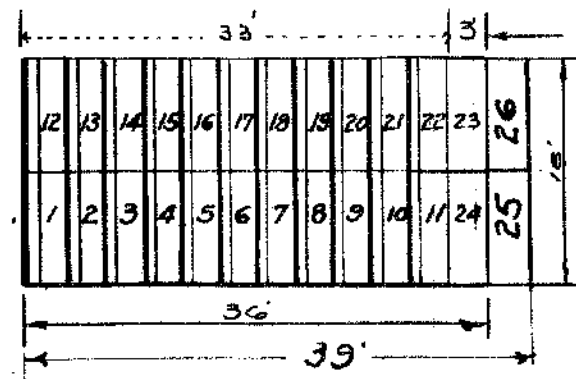
Harry J. Nauha
Engineer

J. J. Kearney
Chief Cemetery Clerk



NOTE. VERTICAL COLUMNS CALLED RANGES ARE NUMBERED 1 TO 16. RANGES ARE SUBDIVIDED INTO PLOTS LETTERED A TO DD.

NOTE. FULL PLOTS MEASURE 18' x 33' AND ARE SUBDIVIDED INTO 22 GRAVES EACH 2' x 9' WITH ONE FOOT SPACE INTERVENING AS IN THE FOLLOWING DIAGRAM.

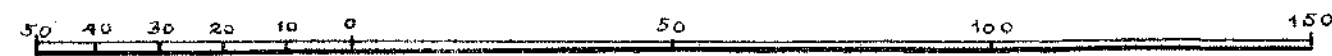


REVISED NOV. 1946, TO INCLUDE THE WALK GRAVES, NUMBERED 23 & 24.

REVISED SEPT. 1949 TO INCLUDE GRAVES 25 & 26, RANGE 7 AND TO EXTEND RANGES 1 & 1A

NOTE. SINGLE GRAVES \$20 EACH. LOTS OF THREE GRAVES AND UPWARDS WITH PRIVILEGE OF ENCLOSING AT RATE OF \$30 PER GRAVE. PRICES ARE SUBJECT TO CHANGE WITHOUT NOTICE.

SCALE OF FEET



J. J. Kearney
CHAIRMAN OF THE CEMETERY COMMITTEE
J. J. Kearney
SUPERINTENDENT