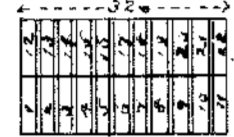


NOTE. VERTICAL COLUMNS CALLED RANGES ARE  
NUMBERED 1 TO 26. RANGES ARE SUBDIVIDED  
INTO PLOTS LETTERED "A" TO "R"

NOTE. FULL PLOTS MEASURE 32' X 18' AND ARE SUBDIVIDED  
INTO 22 GRAVES, EACH 9' X 2' WITH ONE FOOT SPACE  
INTERVENING AS IN THE FOLLOWING DIAGRAM

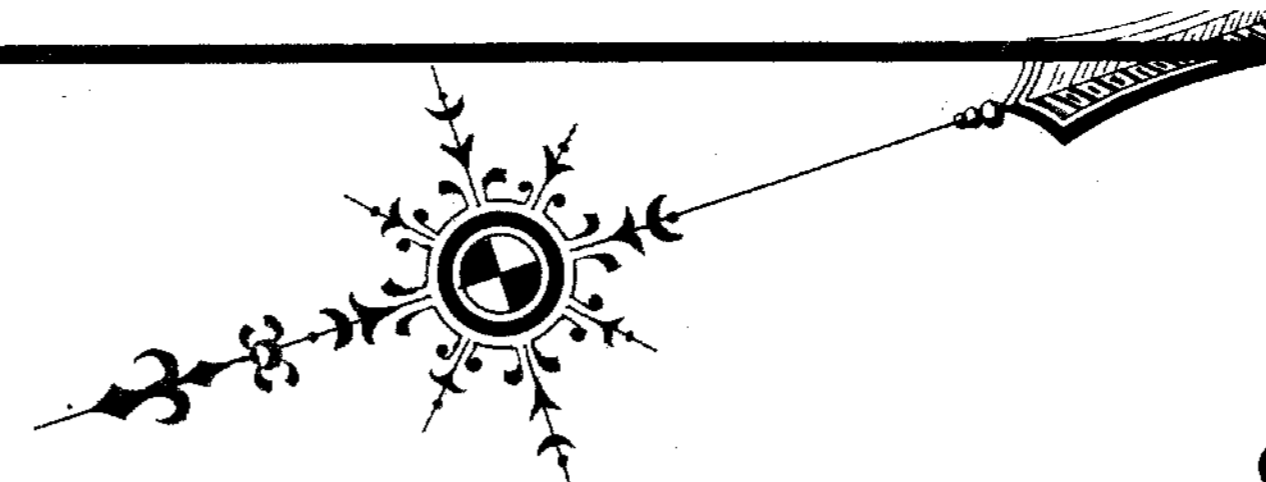


NOTE. SINGLE GRAVES \$15 EACH. LOTS OF THREE

GRAVES AND UPWARDS WITH PRIVILEGE OF  
ENCLOSING AT RATE OF \$25 PER GRAVE.

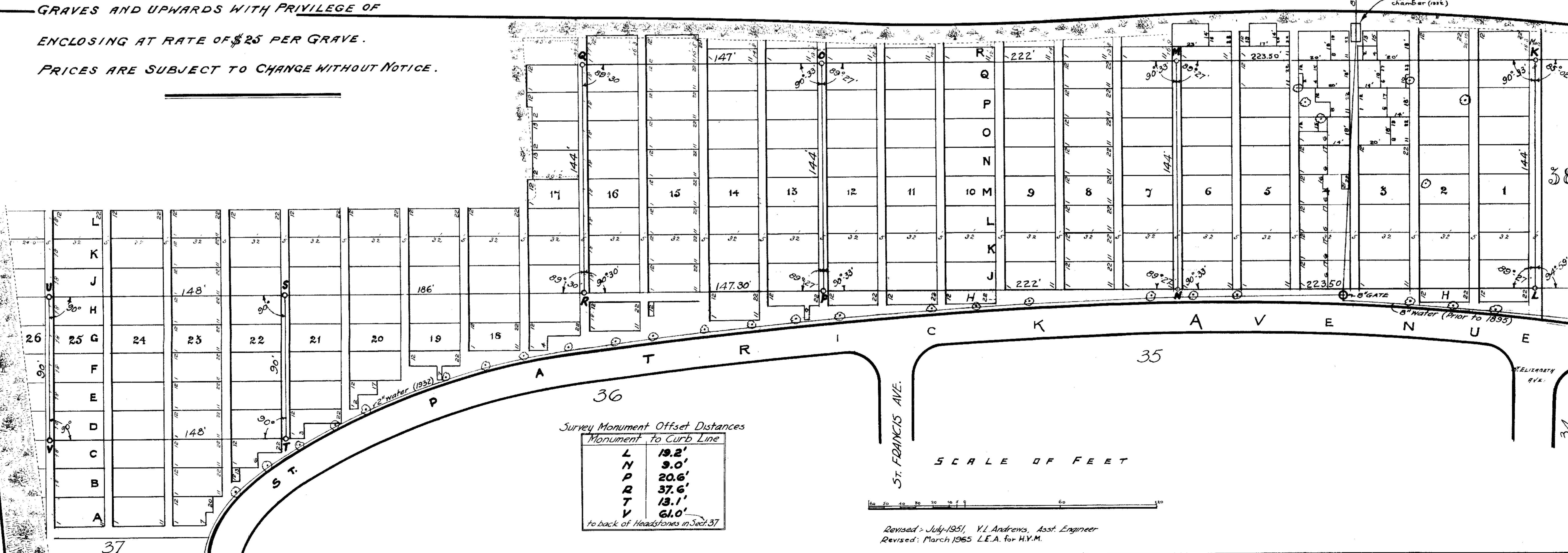
PRICES ARE SUBJECT TO CHANGE WITHOUT NOTICE.

Note: Monuments K, L, M, N, O, P, Q, R, S, T, U, V, set March 1929, in the center of paths, and along the line of burials. The difference between the monumented distances and the distances as shown on the map is due to the fact that when the burials were made, the full width of 32' ft. was cut down slightly and the paths were encroached upon.



# SECTION 39 CALVARY CEMETERY

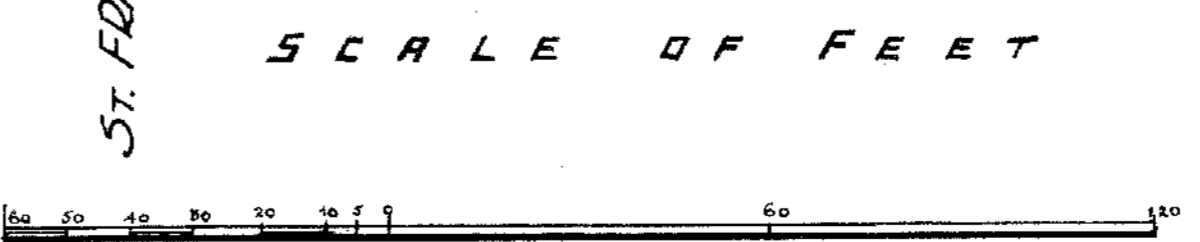
B E T T S A V E N U E



Survey Monument Offset Distances

Monument	to Curb Line
L	19.2'
N	9.0'
P	20.6'
R	37.6'
T	13.1'
V	61.0'

to back of Headstones in Sect. 37



Revised: July-1951, Y.L. Andrews, Asst. Engineer  
Revised: March 1965 L.E.A. for H.Y.M.