

Section 38

Note: Monuments designated A, B, C, E, F, G, K and L set March, 1929, in the center of paths and along the line of burials. Points D, H, J and M are on outer line of coping around Sisters' Plot, which is 34 ft wide. Note: The discrepancy between the monumented distances and the distances shown, is due to the fact that when the burials were made, the full width of 32 ft. for eleven graves was cut down slightly, and the paths were encroached upon.

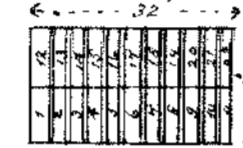
Survey Monument Offset Distances.

Monument	to Curb Line
E	15.5'
F	63.9'
G	82.1'
L	19.2'

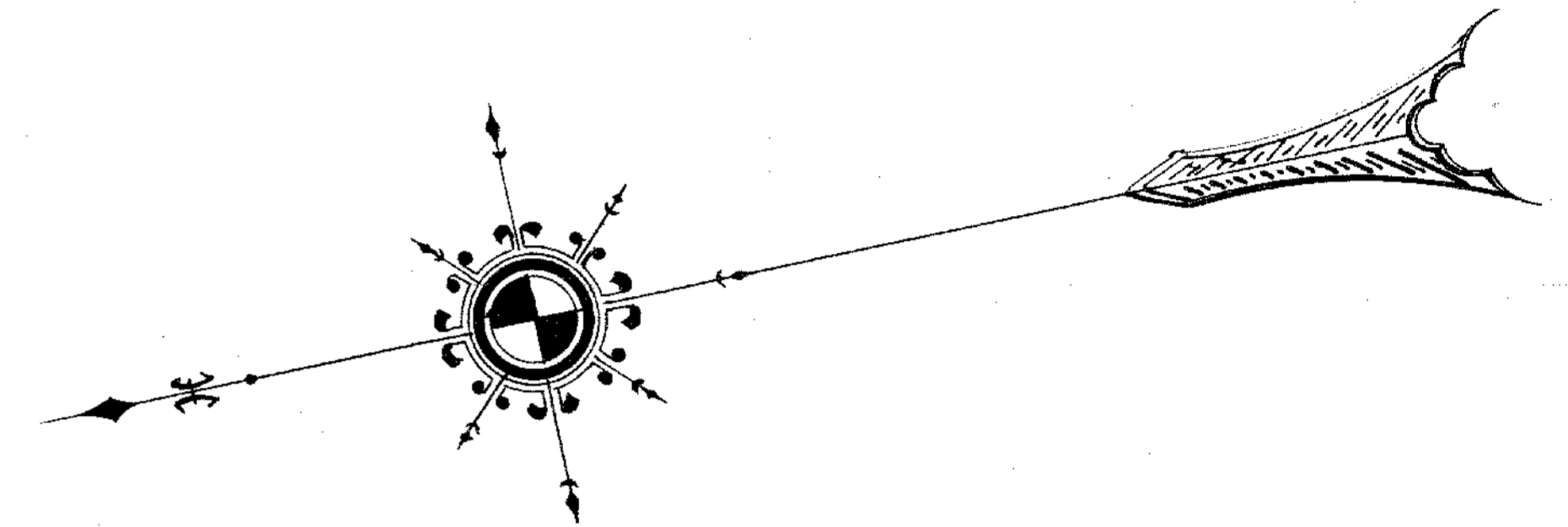
NOTE. VERTICAL COLUMNS CALLED RANGES ARE NUMBERED 1 TO 22.

RANGES ARE SUBDIVIDED INTO PLOTS LETTERED B TO N

NOTE. FULL PLOTS MEASURE 18' X 32' AND ARE SUBDIVIDED INTO 22 GRAVES EACH 2' X 9' WITH 1' SPACE INTERVENING, AS IN THE FOLLOWING DIAGRAM



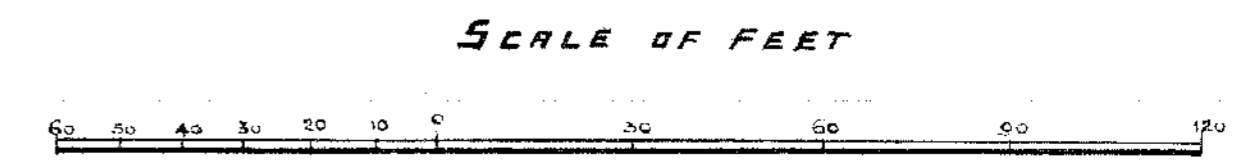
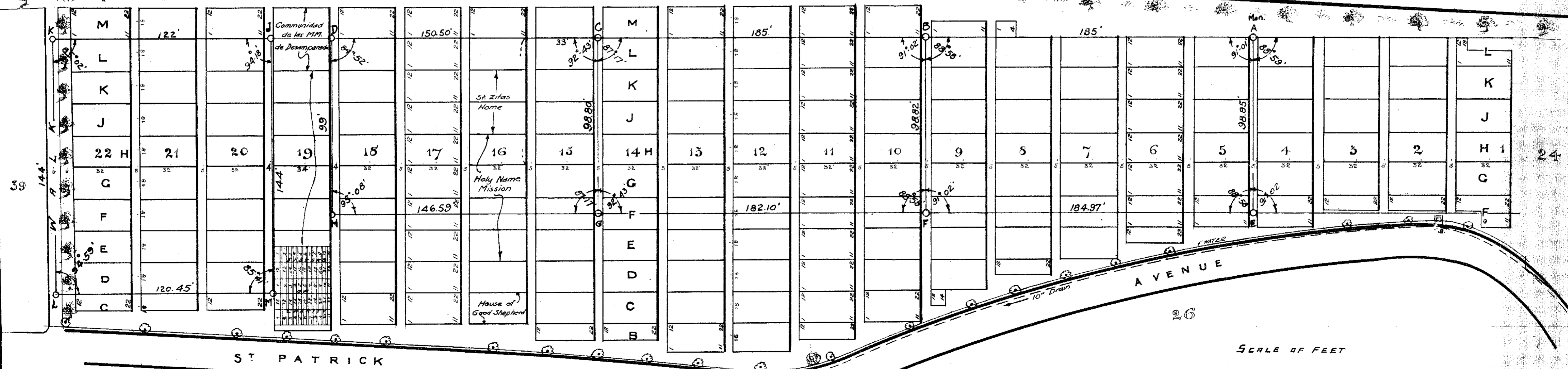
NOTE. SINGLE GRAVES \$15 EACH. LOTS OF THREE GRAVES AND UPWARDS WITH PRIVILEGE OF ENCLOSING AT RATE OF \$25 PER GRAVE. PRICES ARE SUBJECT TO CHANGE WITHOUT NOTICE.



(B E T T S)

58TH STREET

(A V E N U E)



REVISED: JULY-1951. V.L. ANDREWS