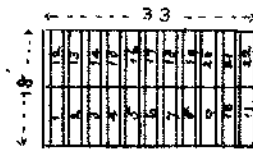


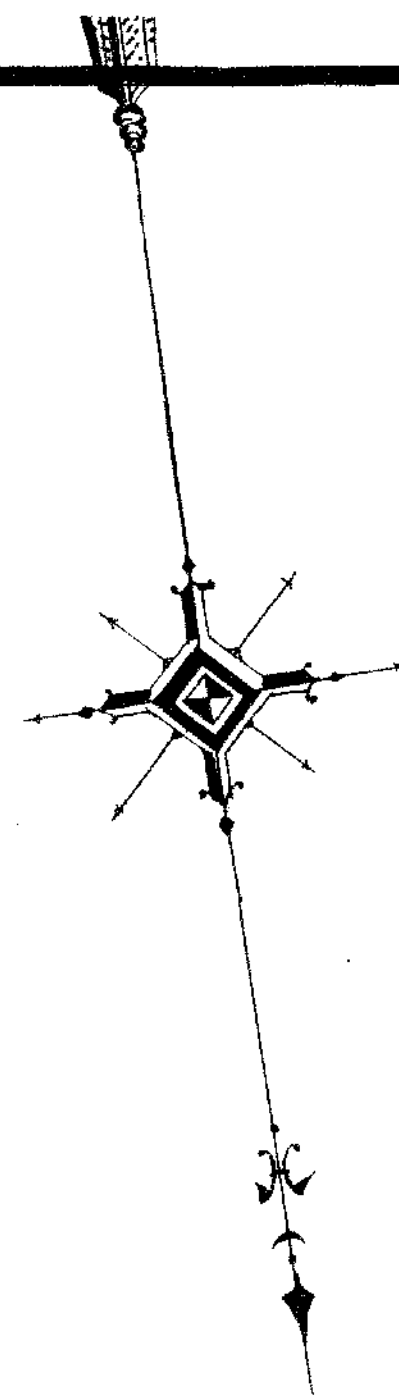
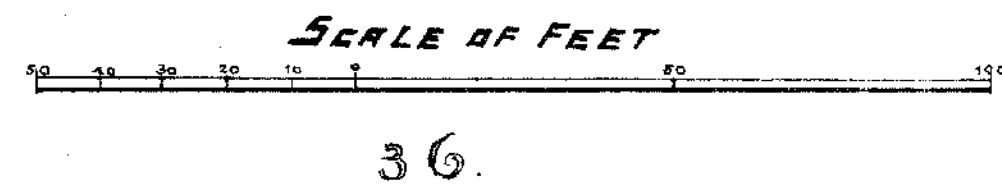
Section 37.

NOTE. VERTICAL COLUMNS CALLED RANGES ARE NUMBERED 1 TO 4. RANGES ARE SUB-DIVIDED INTO PLOTS LETTERED A. TO DD.

NOTE. FULL PLOTS MEASURE 18' X 33' AND ARE SUBDIVIDED INTO 22 GRAVES EACH 2' X 9' WITH 1 FOOT SPACE INTERVENING AS IN THE FOLLOWING DIAGRAM.



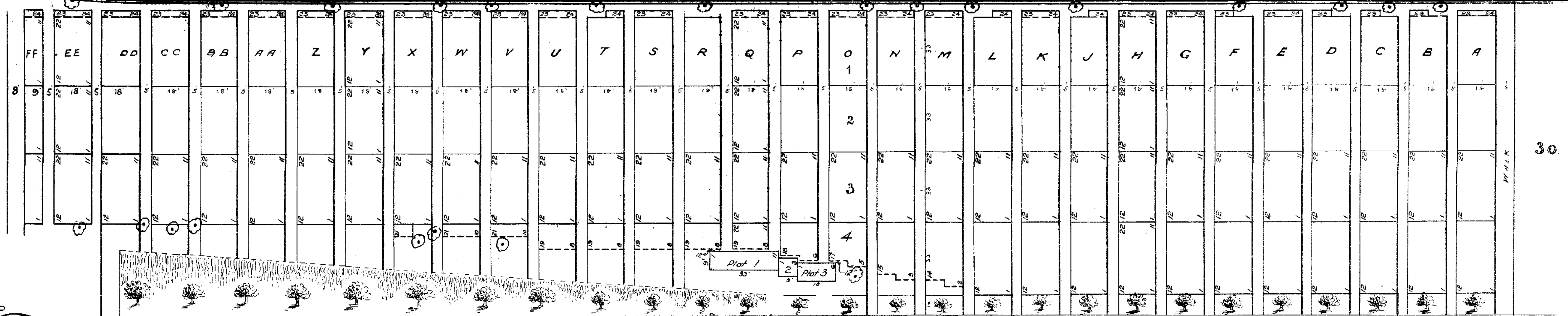
NOTE. SINGLE GRAVES \$ 20 EACH.
PRICES ARE SUBJECT TO CHANGE WITHOUT NOTICE.



ST. MICHAEL AVE.

ST. PATRICK AVENUE

Section 39



APPROVED

CHAIRMAN OF THE CEMETERY COMMITTEE

J. L. Cunningham
SUPERINTENDENT

Henry G. Wynn
CHIEF ENGINEER - LICENSED CITY SURVEYOR.

QUEEN'S BOULEVARD

1913.

H. G. Wynn
1913