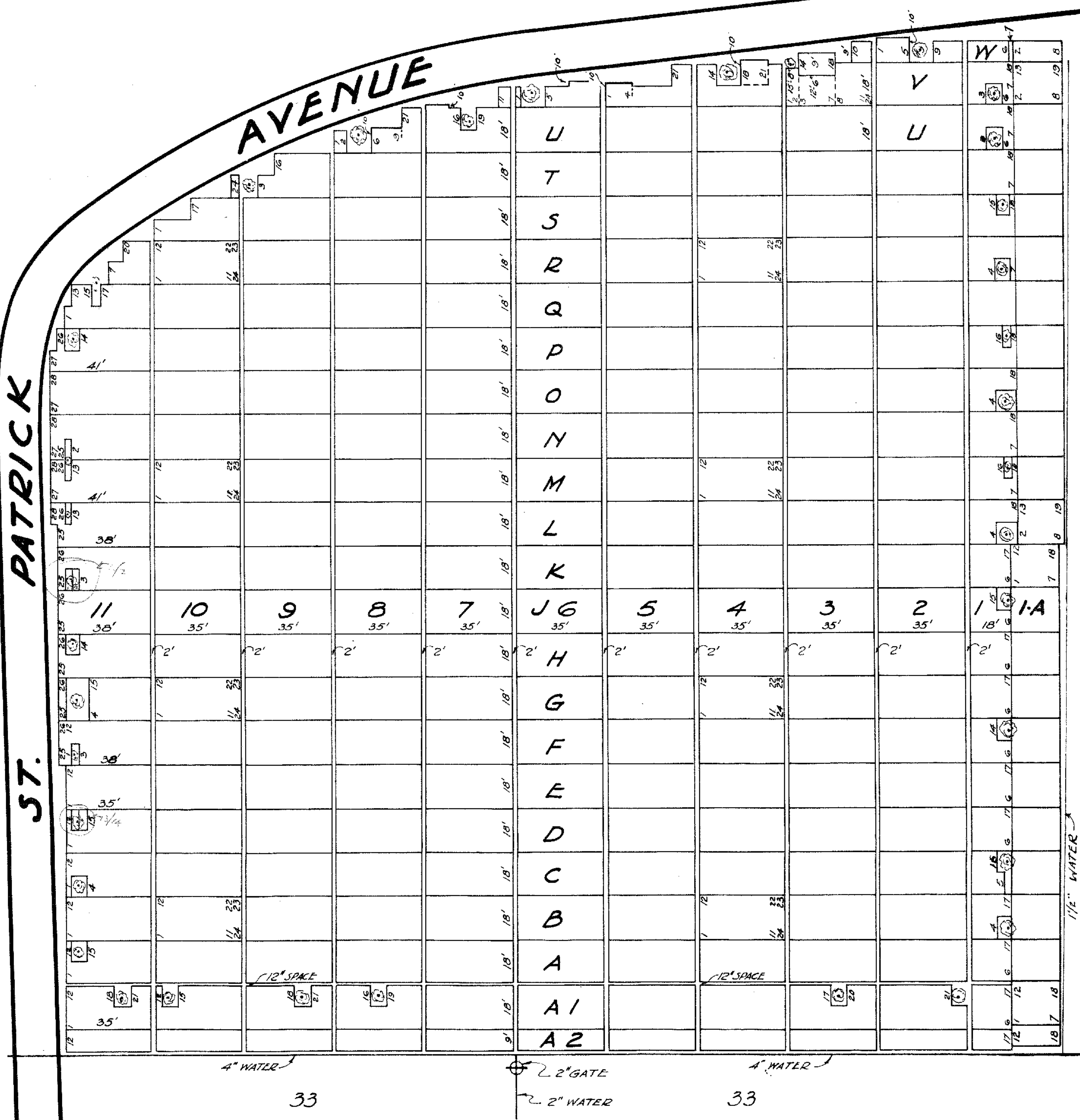
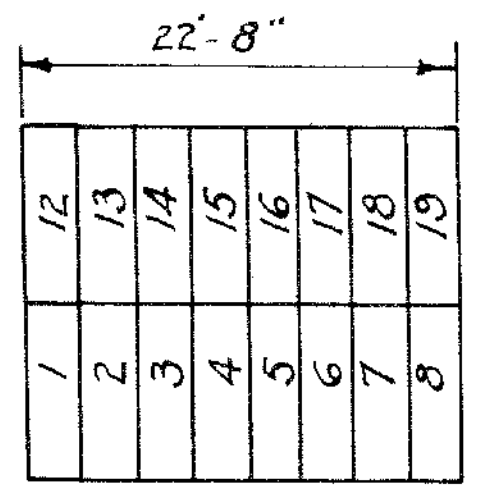


PATRICK AVENUE

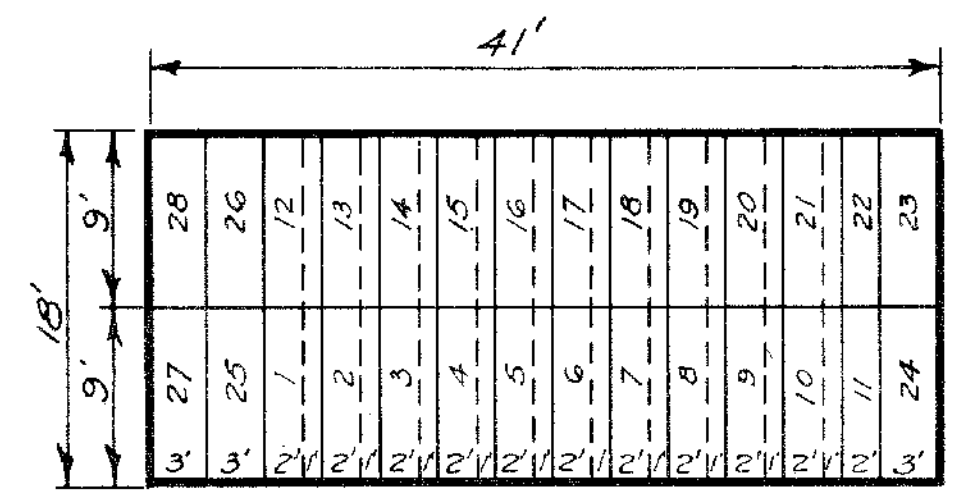
ST. PATRICK



N.



RANGE 1-A



35'

Revised Oct. 20, 1958
to include Range 1-A, in
which graves are 34" wide

Note: Vertical columns called Ranges
are numbered 1 to 11.
Ranges are subdivided into
Plots lettered A to W (eye)
being omitted.
Full plots are subdivided into
graves as in the above diagram.
Graves numbered 1 to 22 incl.
each measure 9'x2' with one
foot of space intervening.
Graves numbered 23 to 28 incl.
each measure 9'x3'.

- 8 U 6-9
- 5 V 1-4
- 2 W 1-5 } Increased in length to 10'
- 4 V 18-21 } for underground vault sites
- 6 V 9-11 & 24 } Dec. '60
- 7 U 12-14 } Sept. 26, 1953.

George C. Elmer
Managing Director

Russell E. Ficks
Superintendent

Harry J. Hanlon
Engineer

John T. Kearney
Chief Cemetery Clerk

**SECTION 36
CALVARY CEMETERY
ST. SEBASTIAN DIVISION**

Scale: 1" = 30'
10 20 30 40 50 60 80
V.L. ANDREWS, ASST ENGINEER
ORIGINAL MAP DATED 1902

REVISIONS	
NOV. 1943	H.T.M.
OCT. 1945	V.L.A.
APRIL 1950	V.L.A.
OCT. 1958	H.J.R.