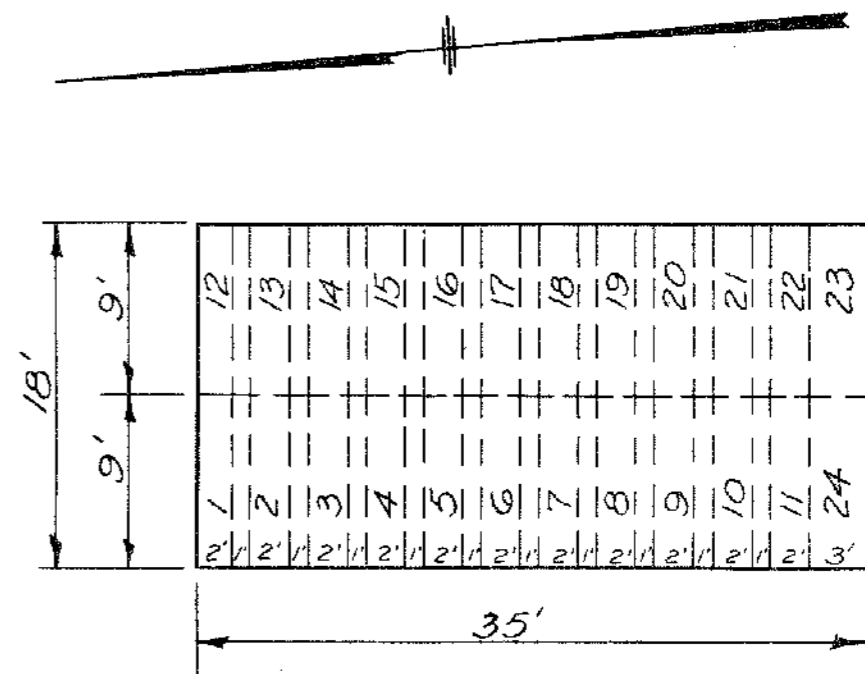
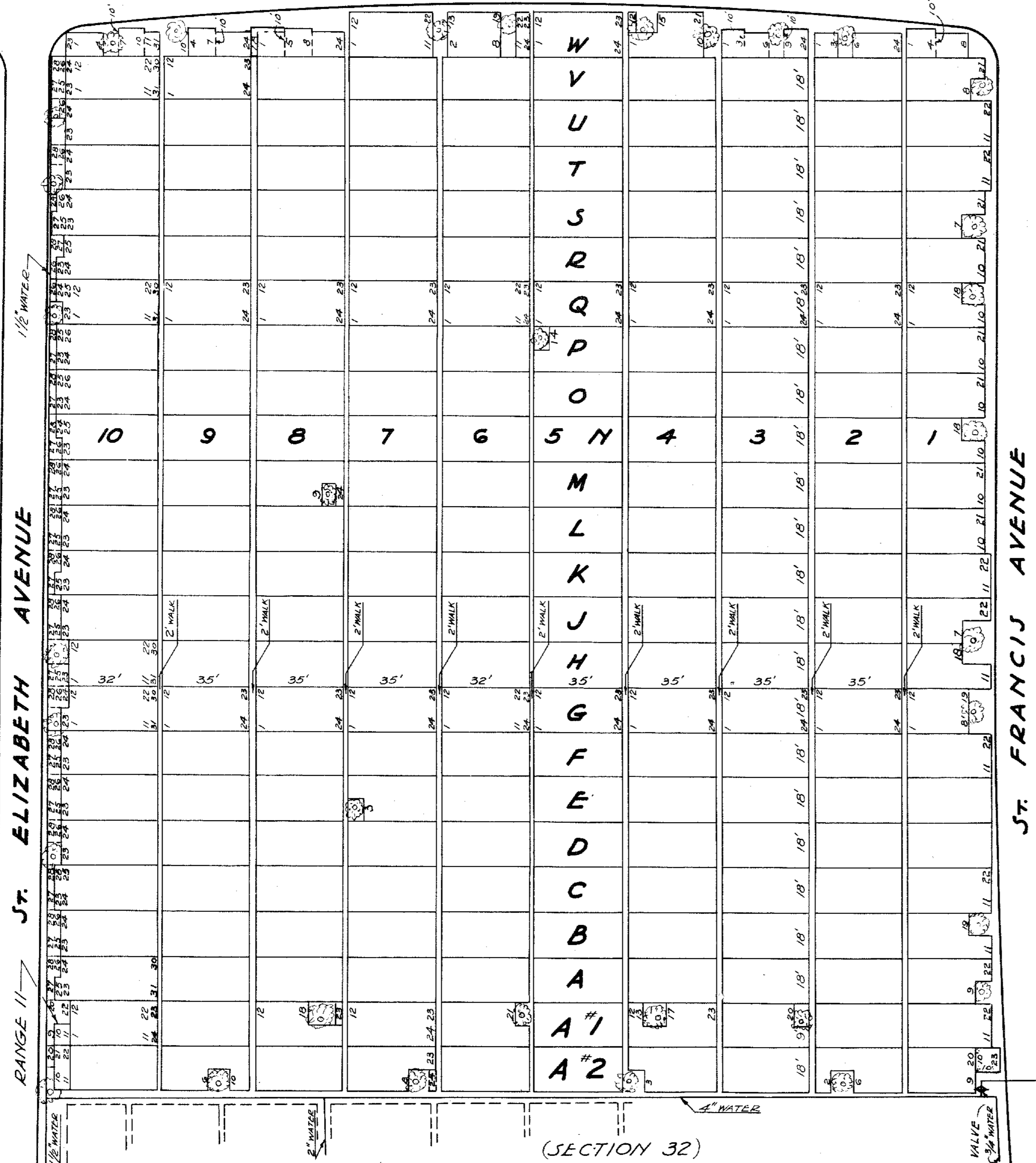


ST. PATRICK AVENUE

PROPERTY OF THE TRUSTEES OF ST. PATRICK'S CATHEDRAL IN THE CITY OF NEW YORK



- 1 W 1-4
 - 8 W 5-8
 - 9 W 4-7
 - 10 W 7-10
 - 3 W 1-3
 - 3 W 9-11 & 24
 - 8 W 1-4 (Gr. 1A & Frac)
- } Increased in length to 10' for underground vault sites Sept. 26, 1953.
- NOTE - Vertical Columns called Ranges are numbered 1 to 11. Ranges are subdivided into Plots lettered A#1, A#2 and A to W, plot 1 (eye) being omitted. Full plots are subdivided into graves as shown in the above diagram.
- The graves in Range 10 bordering St. Elizabeth Avenue do not conform to the standard but are laid out as shown on the map.
- This map supercedes former map of this Section dated 1903.

George J. Clark
Managing Director

August E. Fisher
Superintendent

Harry J. Stanton
Engineer

John T. Kearney
Chief Cemetery Clerk

SECTION 35
CAVARY CEMETERY
ST. SEBASTIAN DIVISION

Scale - 1" = 30'