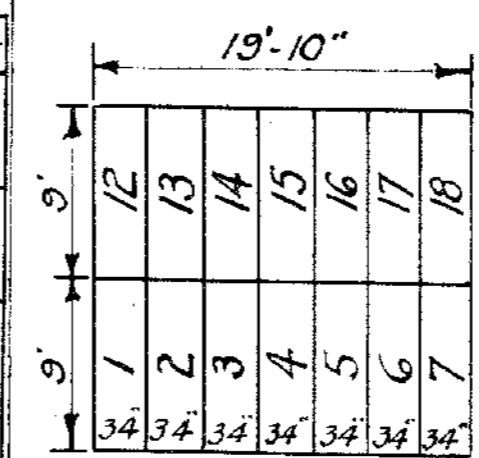
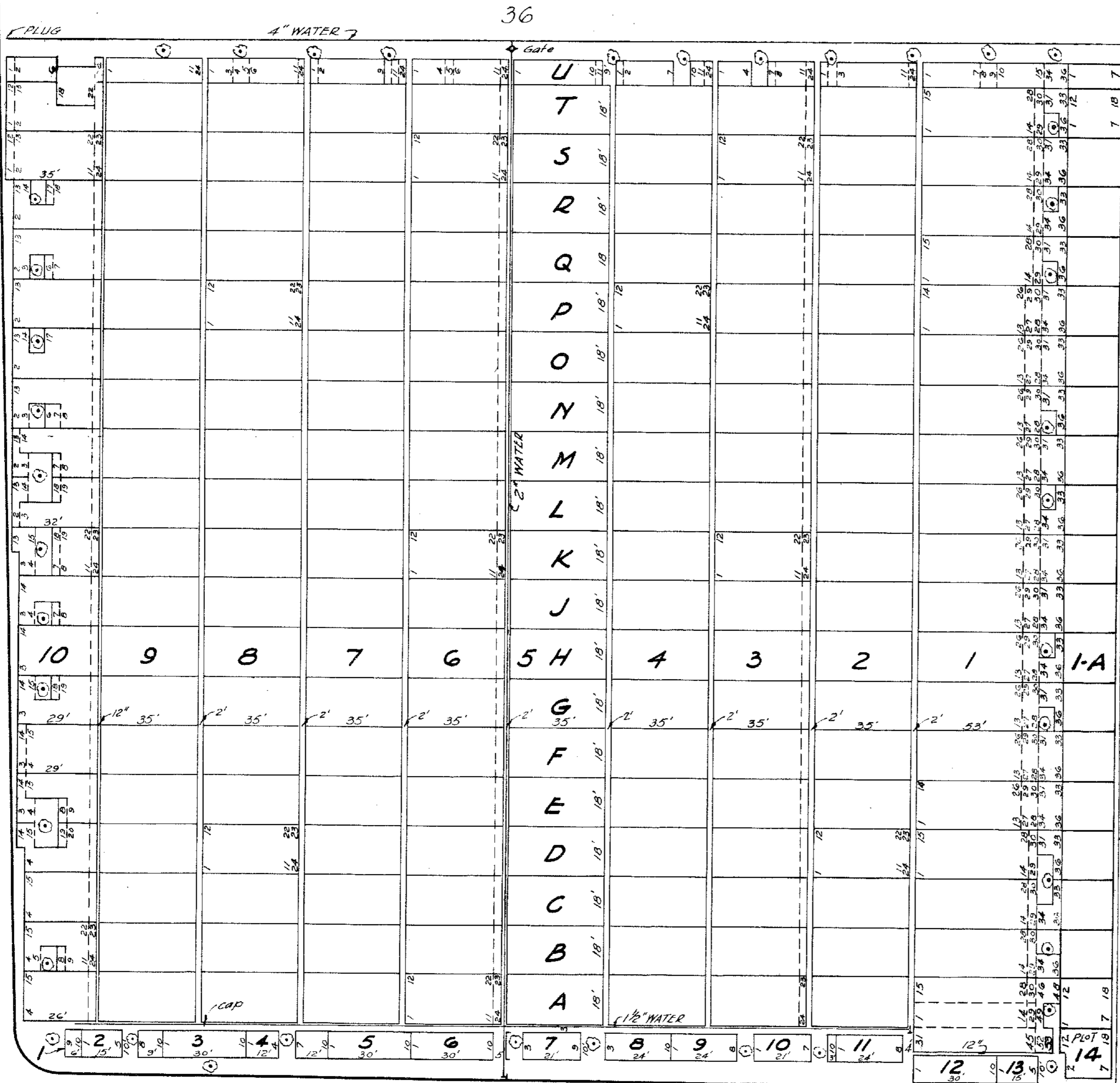


PROPERTY  
OF THE  
TRUSTEES OF ST. PATRICK'S CATHEDRAL  
IN THE  
CITY OF NEW YORK

37  
ST. PATRICK AVE.

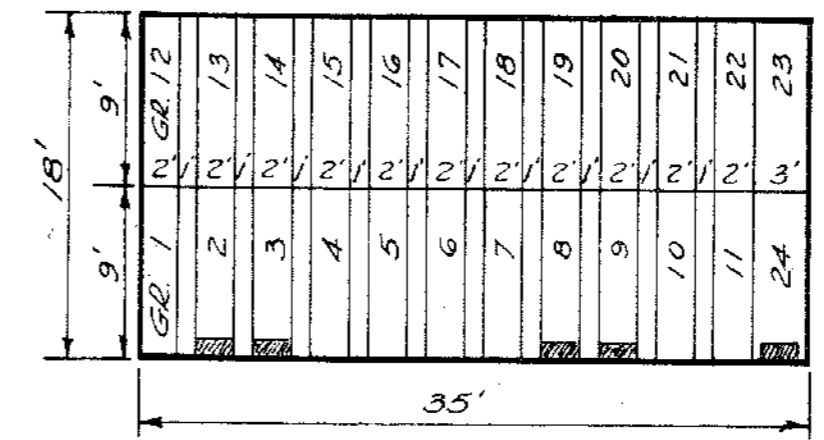


Revised Oct 1958  
to include Range 1-A  
and Plot 14, in  
which the graves  
are 34" wide

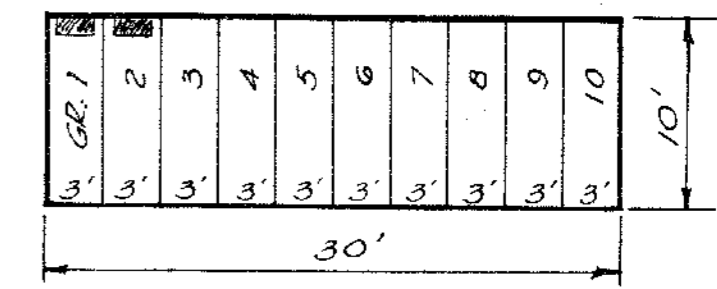
Note: Graves sold since 1931, in Ranges 1 and 10  
are 3'-0" wide, and the Monuments are  
centered on the graveholdings.

Note:  
Vertical columns called Ranges are  
numbered 1 to 10. Ranges are subdivided into  
Plots lettered A to U, (V) being omitted.

Full plots are subdivided into  
graves as shown in the following  
diagram, with the exceptions as  
shown on the map.



Plots numbered 1 to 13 are  
subdivided into graves as  
shown in the following diagram.



*George F. Ehrhart*  
Managing Director

*Richard E. Fisher*  
Superintendent

*Nancy J. Hannon*  
Engineer

*John T. Kearney*  
Chief Cemetery Clerk

Scale: 1"=30'  
V.L. ANDREWS, ASST. ENGINEER

ST. MICHAEL AVE.

30

ORIGINAL MAP DATED 1901  
REVISIONS

JAN. 1938	H.T.M.
DEC. 1945	H.T.M.
JULY 1950	Y.L.A.
OCT. 1958	H.J.H.

**SECTION 33  
CALVARY CEMETERY  
ST. SEBASTIAN DIVISION**