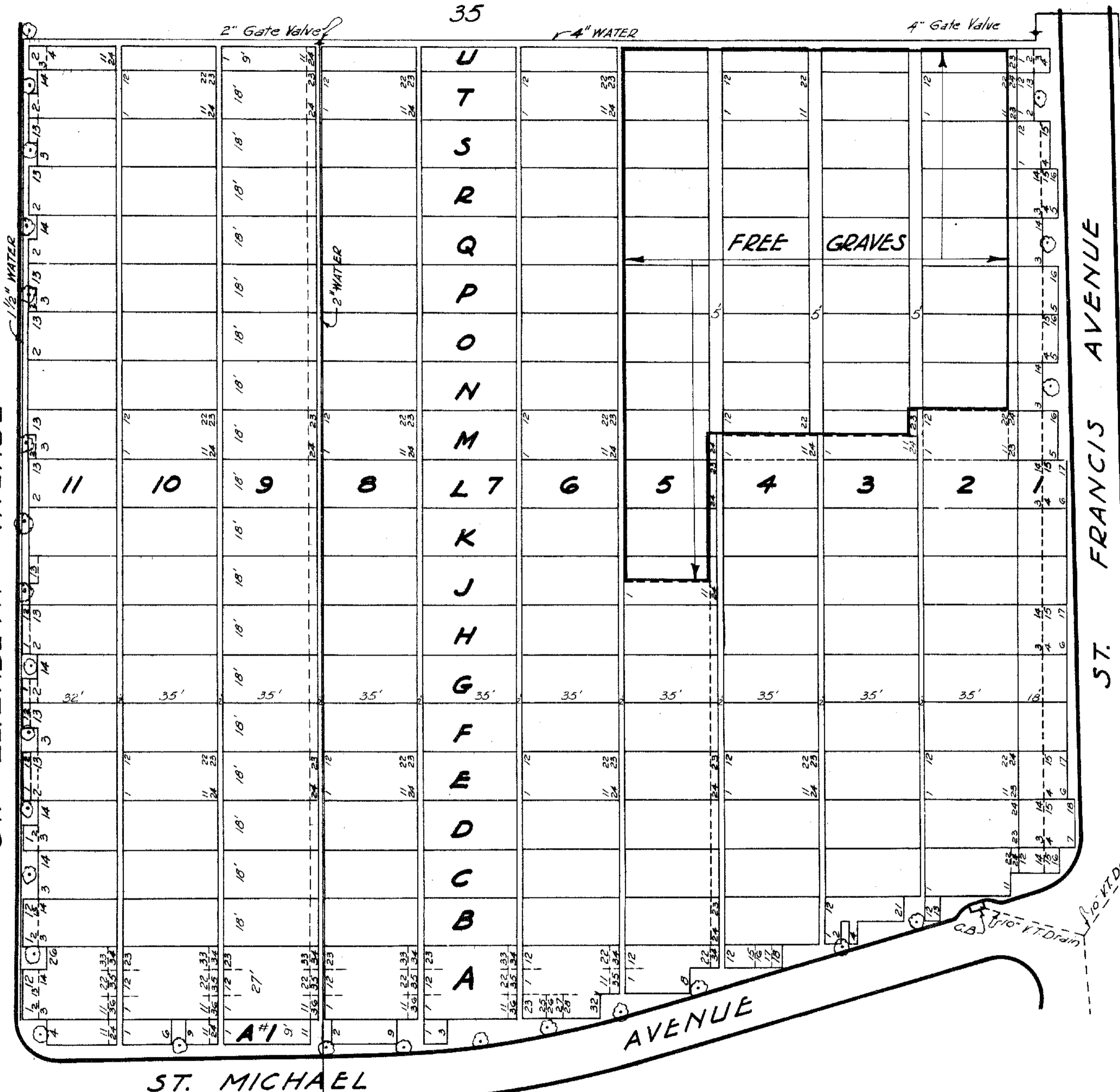


33

ST. ELIZABETH AVENUE



ST. MICHAEL

ST. FRANCIS AVENUE

35

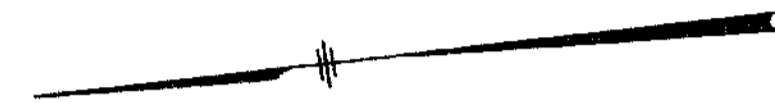
30

SCALE: 1" = 30'

20 15 10 5 0 10 20 30 40 50 60 70 80 90 100

V.L. ANDREWS, ASST. ENGINEER
JUNE - 1950.

PROPERTY
OF THE
TRUSTEES OF ST. PATRICK'S CATHEDRAL
IN THE
CITY OF NEW YORK



35'																						
18'	12	13	14	15	16	17	18	19	20	21	22	23										
9'	2'	2'	2'	2'	2'	2'	2'	2'	2'	2'	2'	3'										
9'	1	2	3	4	5	6	7	8	9	10	11	24										

NOTE:
VERTICAL COLUMNS CALLED RANGES ARE NUMBERED 1 TO 11.
RANGES ARE SUBDIVIDED INTO PLOTS, LETTERED A*1 AND A TO U. PLOT 1 (eye) BEING OMITTED.
FULL PLOTS ARE SUBDIVIDED INTO GRAVES AS SHOWN IN THE ABOVE DIAGRAM.
GRAVES 23 AND 24 IN RANGE 2 AND GRAVES IN PLOT A, RANGES 6 TO 11 DO NOT CONFORM TO THE STANDARD, BUT ARE LAID OUT AS SHOWN ON THE MAP.

George W. ...
MANAGING DIRECTOR

Russell E. Fike
SUPERINTENDENT

Nancy J. ...
ENGINEER

John T. Kearney
CHIEF CEMETERY CLERK

**SECTION 32
CALVARY CEMETERY
ST. SEBASTIAN DIVISION**