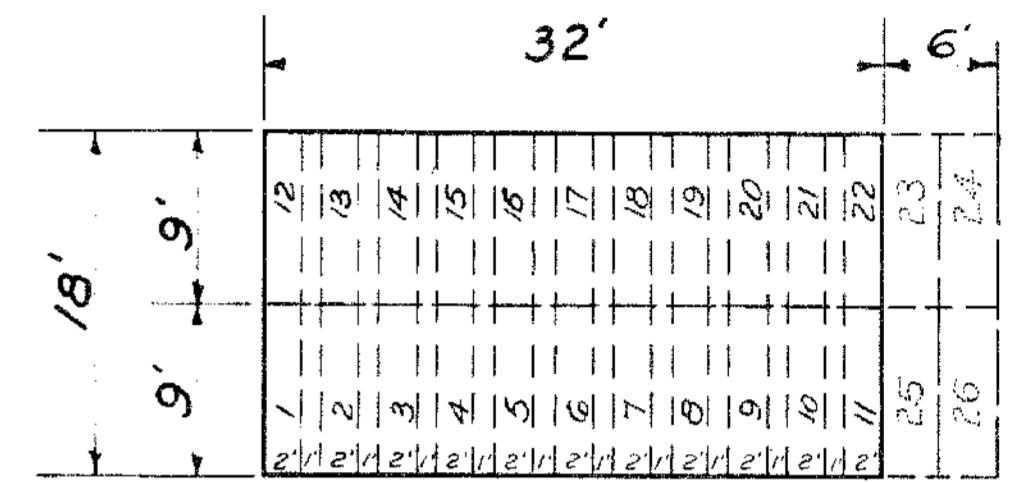
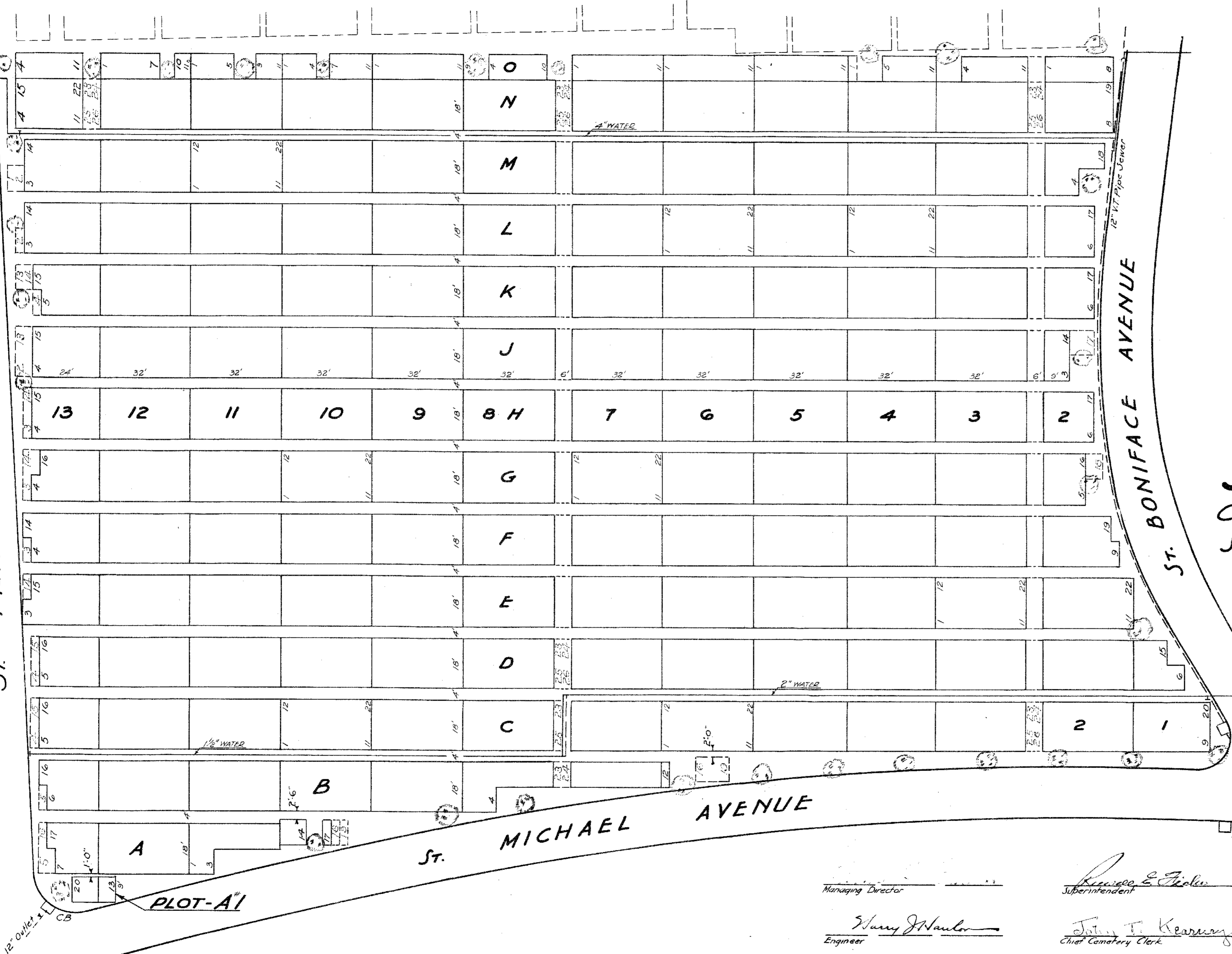


(SECTION 34)

ST. FRANCIS AVENUE

ST. BONIFACE AVENUE

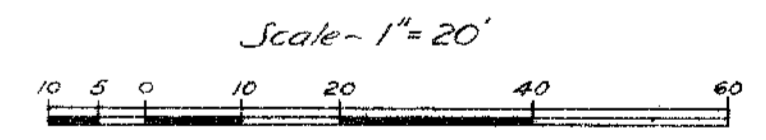
ST. MICHAEL AVENUE



Note: Vertical Columns called Ranges are numbered 1 to 13.  
 Ranges are subdivided into Plots lettered A through O, plot I (eye) being omitted.  
 Full Plots measure 32' x 18' and are subdivided into 22 graves, each 9' x 2' with one foot of space intervening as in the above diagram.  
 This map supercedes former map of this Section dated 1906  
 In Ranges 3 & 8 and in 13 Plot N Graves 23-26 are added

**SECTION 31**  
**CALVARY CEMETERY**  
**ST. SEBASTIAN DIVISION**

PROPERTY  
 OF THE  
 TRUSTEES OF ST. PATRICK'S CATHEDRAL  
 IN THE  
 CITY OF NEW YORK



*Managing Director*  
*Superintendent*  
*Engineer*  
*Chief Cemetery Clerk*