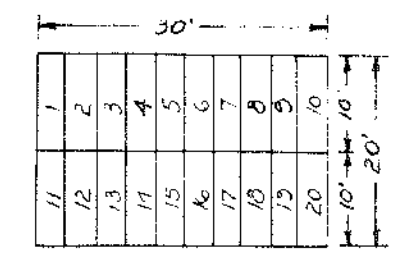


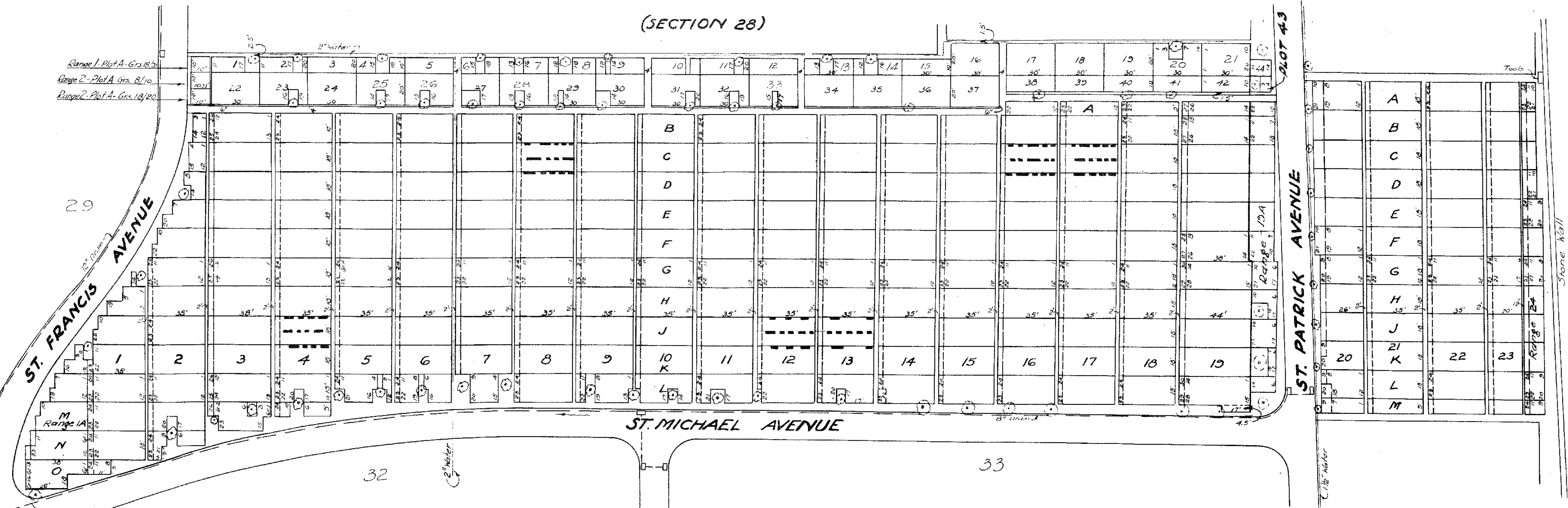
32'x18' Standard  
This standard applies where graves have been added in the walks



30'x20' Standard

Note: Vertical columns called Ranges are numbered 1A to 24. Ranges are subdivided into Plots lettered A to O. These Plots measure 32'x18' and contain 22 graves, each 9'x2' with one foot of space intervening.  
The 30'x20' Plots are not designated by a Range, but are numbered 1 to 42 and contain 20 graves, each 10'x3'.

(SECTION 28)



ST. MICHAEL AVENUE

**SECTION 30  
CALVARY CEMETERY  
ST. SEBASTIAN DIVISION**

Scale: 1" = 40'



July 5, 1937

This map supersedes former map of this section dated 1895.

*Aloysius C. Sineen*  
Managing Director

*Nancy J. Haulow*  
Superintendent

*Gerald Griffin*  
Engineer

PROPERTY  
OF THE  
TRUSTEES OF ST. PATRICK'S CATHEDRAL  
IN THE  
CITY OF NEW YORK.

New York Office ~ 24 East 52<sup>nd</sup> St.

REVISIONS	DATE
ADDITIONAL GRAVES	JULY 5 - 1937
"	MARCH 18 - 1895
"	JUNE 30 - 1944
"	OCT. 20 - 1945
"	MAY - 17 - 1952

Prepared by H.T. Mann 7-5-37