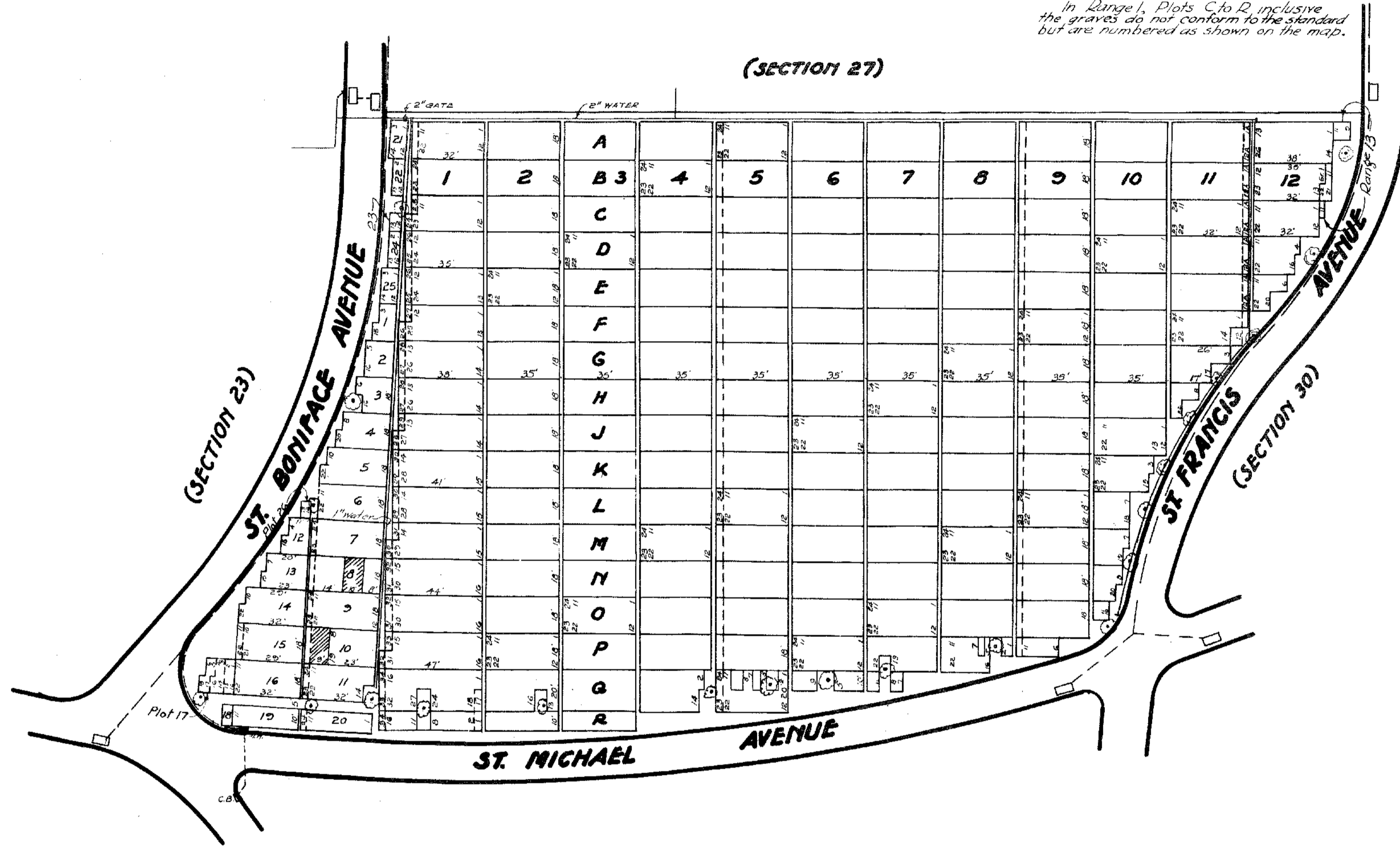


Note:
Vertical columns called Ranges are numbered 1 to 13. Ranges are subdivided into Plots lettered A to R. These Plots measure 32'x18' and contain 22 graves, each 2'x2' with one foot of space intervening.
The Plots south of Range one (1) are not designated by a Range, but are numbered 1 to 26. The 32'x18' standard also applies to these Plots.
In Range 1, Plots C to R inclusive the graves do not conform to the standard but are numbered as shown on the map.



PROPERTY
OF THE
TRUSTEES OF ST. PATRICK'S CATHEDRAL
IN THE
CITY OF NEW YORK

New York Office - 24 East 52nd St.

**SECTION 29
CALVARY CEMETERY
ST. SEBASTIAN DIVISION**

Scale: 1" = 40'



June 6, 1939.

This map supersedes former map of this section dated 1900.

Alvin C. Dimsen
Managing Director

Nary J. Nanton
Superintendent

Edo. Griffin
Engineer