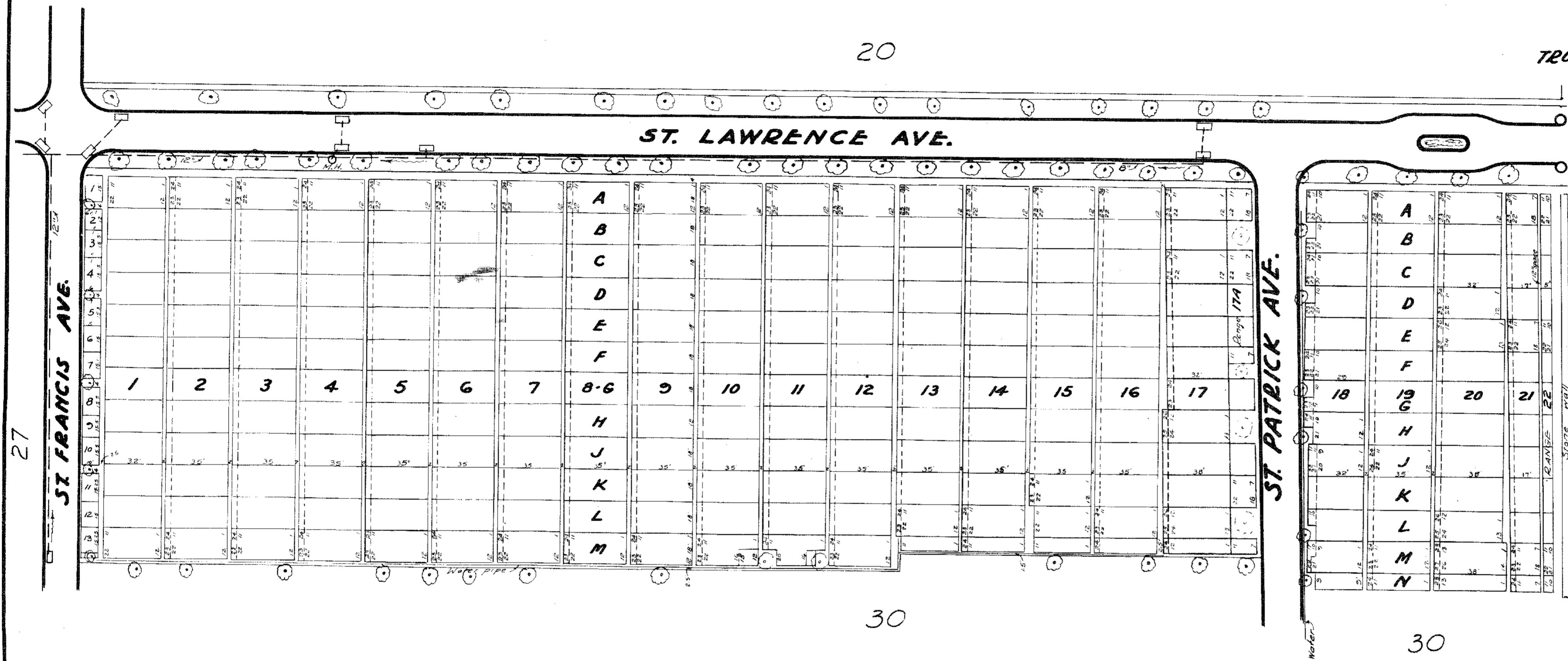
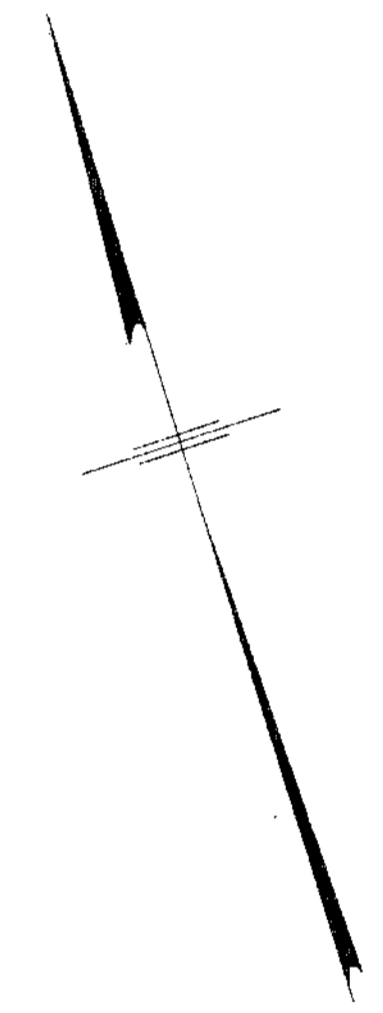


PROPERTY
OF THE
TRUSTEES OF ST. PATRICK'S CATHEDRAL
IN THE
CITY OF NEW YORK.

New York Office ~ 24 East 52nd St.



QUEEN'S BOULEVARD



**SECTION 28
CALVARY CEMETERY
ST. SEBASTIAN DIVISION**

Mar. 21, 1944

Scale: 1" = 40'

This Map supersedes former Map of this Section dated 1928.

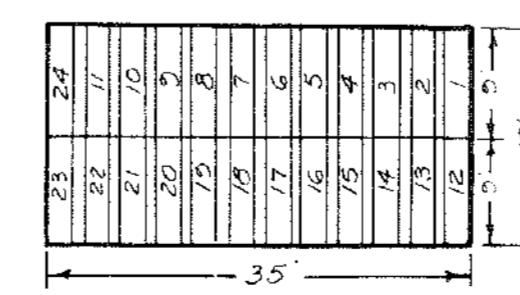
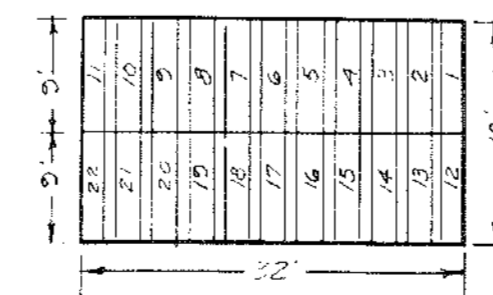
Alexander D. ...
Managing Director

Superintendent

J. T. Kearney
Chief Cemetery Clerk

A. T. Manna
Asst Engineer

Vertical columns are called Ranges and are numbered 1 to 22.
Ranges are subdivided into Plots lettered A to M.
Plots bordering St. Francis Avenue are not designated by a Range but are numbered 1 to 13.



These standards apply to Ranges 1 to 16 incl, and Ranges 18, 19, 21, and 22.

Ranges 17 and 20 are numbered as indicated on map.

REVISIONS	
MARCH-1919-	G.S.G.
" -1937-	H.T.M.
SEPT.-1939-	H.T.M.
FEB. - 1945-	H.T.M.
OCT. - 1945-	H.T.M.
OCT. - 1951-	V.L.A.