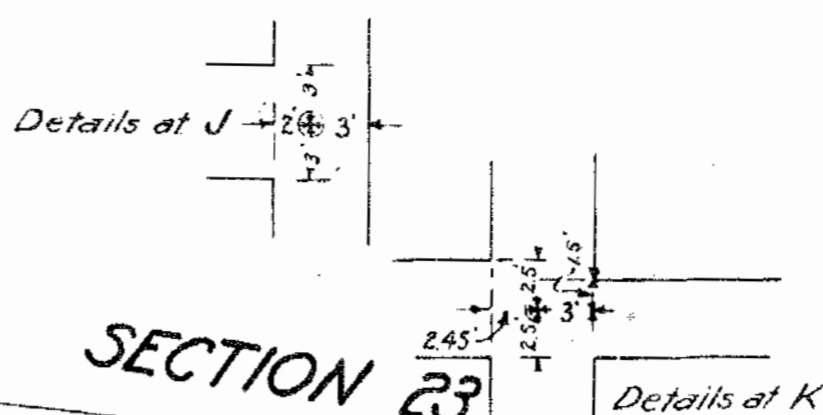


PROPERTY OF
THE TRUSTEES OF ST. PATRICK'S CATHEDRAL
IN
THE CITY OF NEW YORK

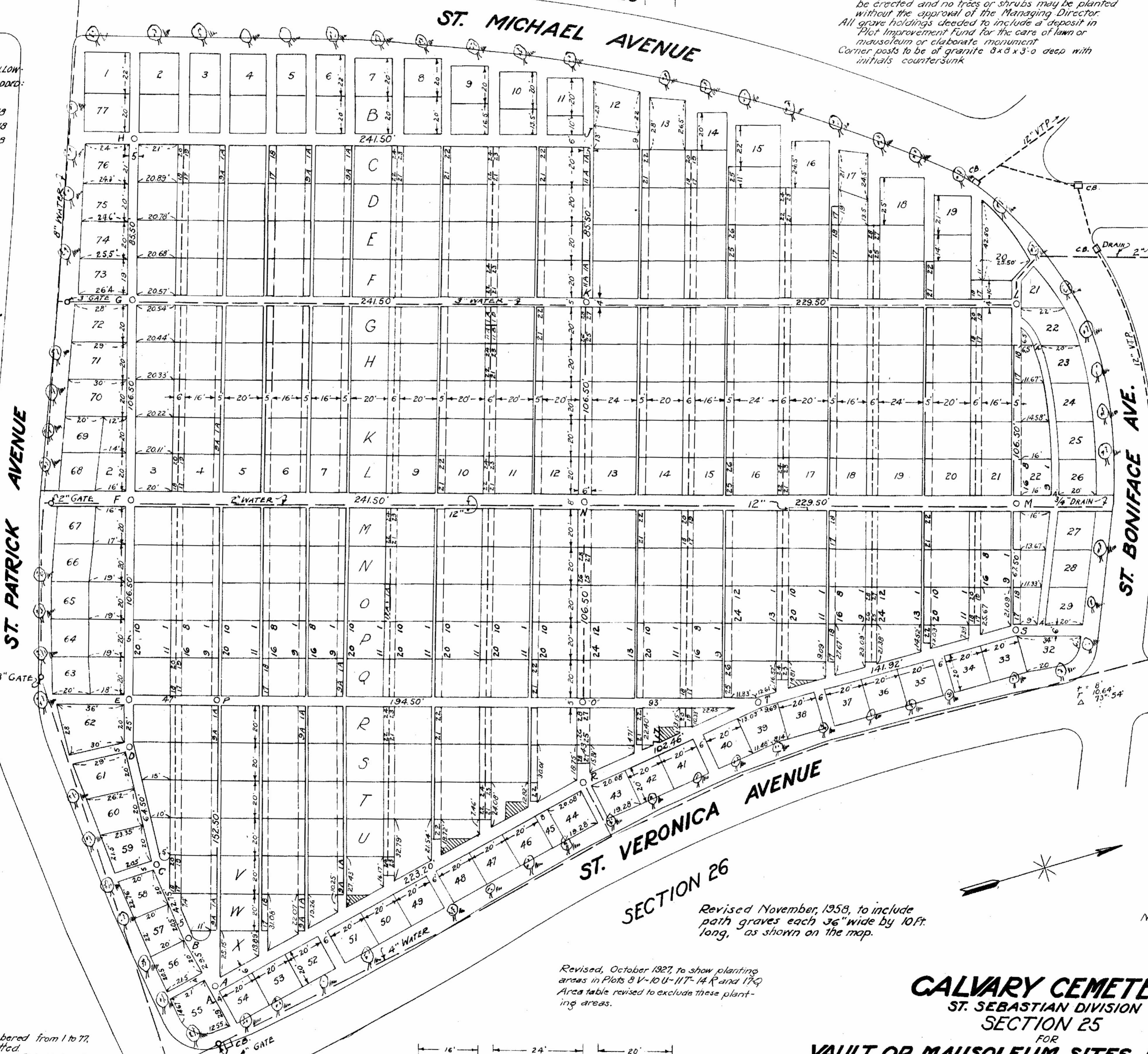


This section to be deeded in plots and fractional plots subject to the following restrictions:
To be kept on the lawn plan.
No enclosures or curbing permitted, but corner posts, marking the boundary of a grave holding may be set to the lawn level.
No overground or underground mausoleums may be erected and no trees or shrubs may be planted without the approval of the Managing Director.
All grave holdings deeded to include a deposit in Plot Improvement Fund for the care of lawn or mausoleum or elaborate monument.
Corner posts to be of granite 8x8x3-0 deep with initials countersunk.

SINCE 1953 THE FOLLOWING GRAVES WERE ADDED:
6 E 9A & 17
6 F 1A 9A 17 & 18
6 G 1A 9A 17 & 18
6 H 1A 9A 17 & 18
6 J 18
8 O 1A & 11A
10 G 11A & 11B
12 F 1A

NOVEMBER - 1958:
GRAVES ADDED IN MAJORITY OF PATHS
H.J.H.

17-M-⁶/₁₀ 12" x 10"
added at foot of Plot - Aug 1957.



PLOT	AREA	PLOT	AREA
12	540	73	519
B-13	264	74	501
13	545	75	489
17	364	76	507
D-18	260	C-3	419
22	438	D-3	417
H-22	182	E-3	415
J-22	263	F-3	413
K-22	306	G-3	410
L-22	320	H-3	408
M-22	297	J-3	406
N-22	250	K-3	403
O-22	203	L-3	401
32	490	S-3	350
39	423	T-3	250
43	394	U-3	150
44	394	W-4	289
53	522	X-5	440
56	420	W-6	425
57	425	W-7	236
58	428	V-8	386
59	455	U-9	543
60	486	U-10	196
61	552	T-11	300
62	769	S-12	188
Q-2	370	S-13	246
P-2	380	R-14	270
O-2	380	R-15	116
N-2	360	Q-16	437
M-2	330	Q-17	200
L-2	300	P-18	406
K-2	260	P-19	431
70	620	P-20	205
71	590	O-21	374
72	570	20	690

SECTION 24

ST. PATRICK AVENUE

SECTION 23

ST. MICHAEL AVENUE

ST. BONIFACE AVE.

SECTION 31

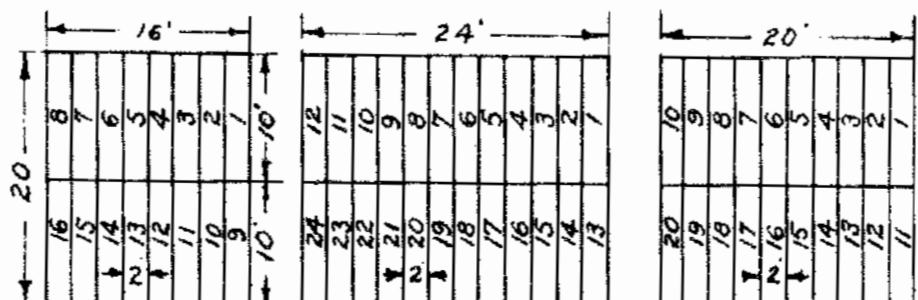
ST. VERONICA AVENUE

SECTION 26

Revised November, 1958, to include path graves each 36" wide by 10ft. long, as shown on the map.

Revised, October 1927, to show planting areas in Plots 8 V-10 U-11 T-14 R and 17 Q. Area table revised to exclude these planting areas.

Border Plots are numbered from 1 to 77, 30 and 31 being omitted.
Interior Plots are lettered B to X, 1 being omitted, and vertical ranges are numbered from 2 to 22.
These plots are 16, 20 or 24 in width, and contain 16, 20 and 24 graves respectively, each grave being 2x10.



Wm. J. Howard
Managing Director

Charles Griffin
Engineer

Harry J. Naudon
Asst. Engineer

New York Office, 24 East 52nd St.

CALVARY CEMETERY
ST. SEBASTIAN DIVISION
SECTION 25

FOR
VAULT OR MAUSOLEUM SITES, PLOTS, ETC.

Scale: 1"=30'
5 10 20 30 60 90

June, 1921.

THIS MAP SUPERCEDES MAP 166 A, DATED DECEMBER, 1919.