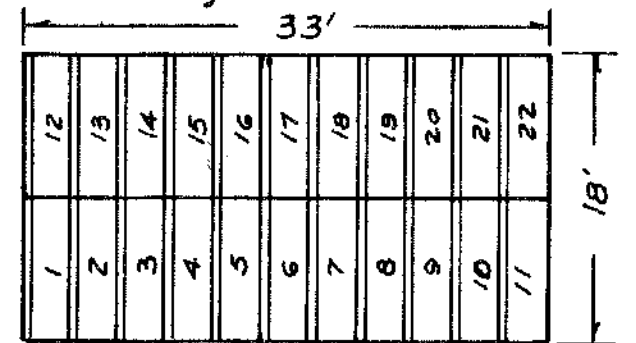
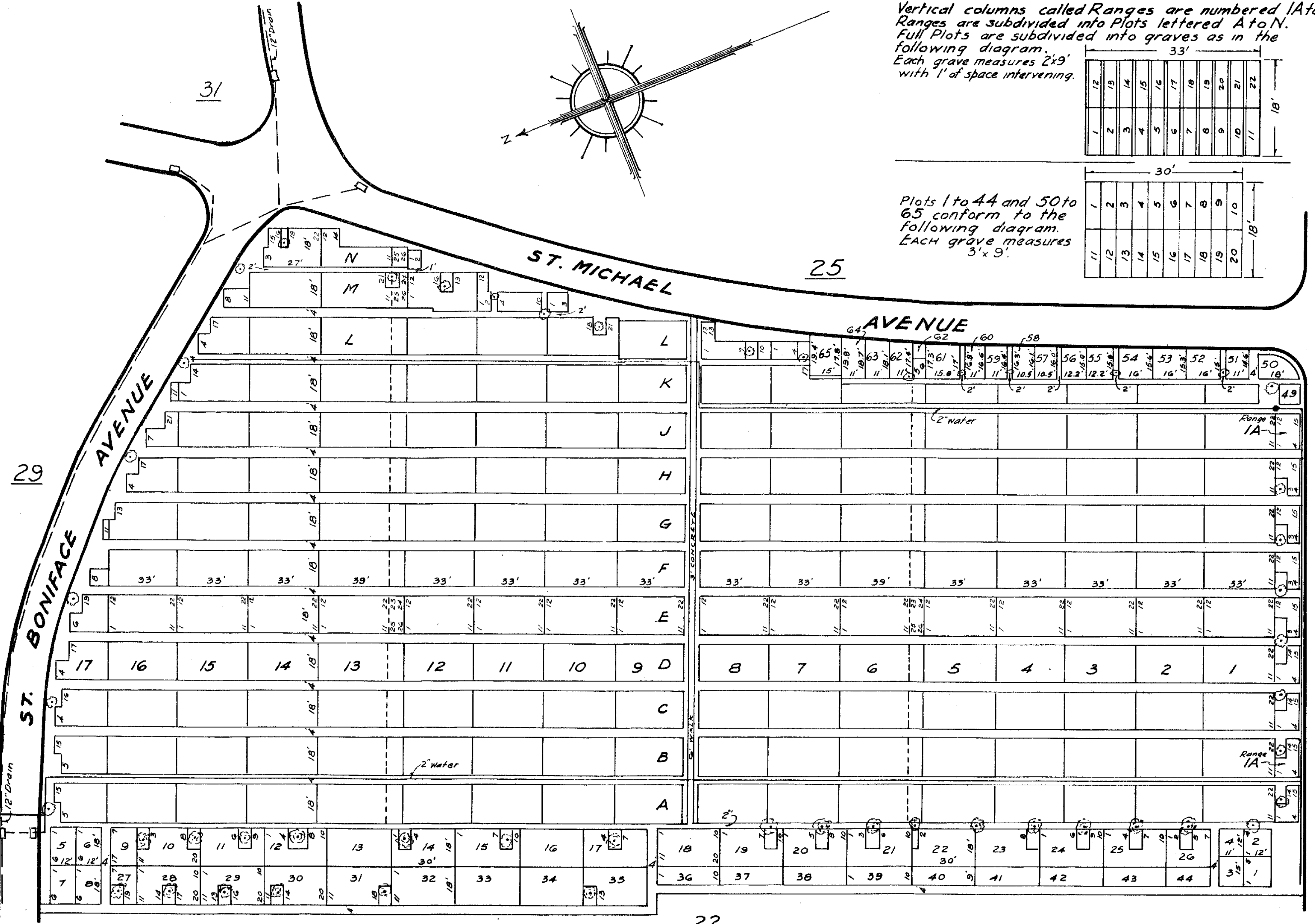
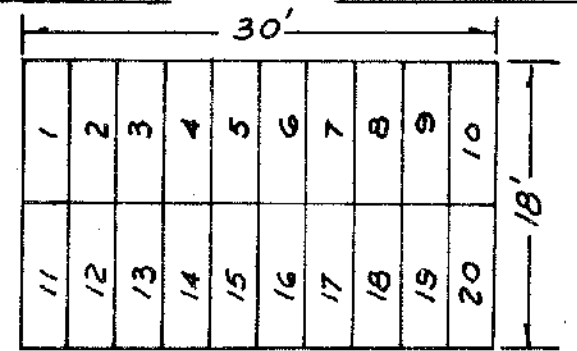


Vertical columns called Ranges are numbered 1A to 17. Ranges are subdivided into Plots lettered A to N. Full Plots are subdivided into graves as in the following diagram. Each grave measures 2'x9' with 1' of space intervening.



Plots 1 to 44 and 50 to 65 conform to the following diagram. Each grave measures 3'x9'.



ORIGINAL MAP PREPARED 6-8-20. H.J.H.

REVISIONS

- 1929 - H.T.M.
- 35 - H.T.M.
- 36 - H.T.M.
- 39 - H.T.M.
- 51 - V.L.A.
- 57 - H.J.H.
- 68 - V.L.A.

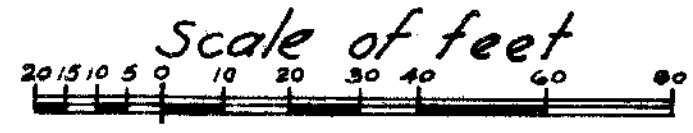
Executive Director \_\_\_\_\_

Superintendent \_\_\_\_\_

Asst. Supt. - Field- \_\_\_\_\_

22

**SECTION 23**  
**ST. SEBASTIAN DIVISION**  
**CALVARY CEMETERY**



V.L.A.  
JULY-'68

21