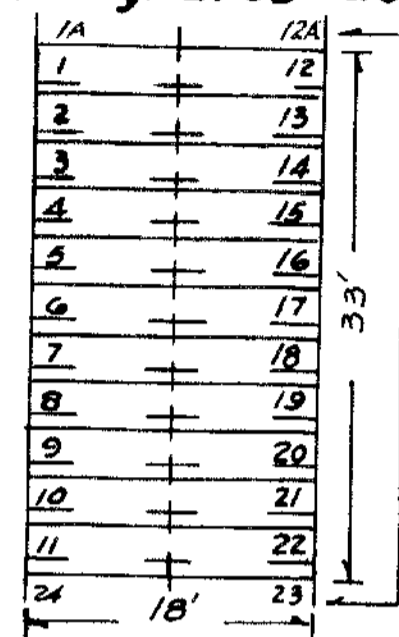


Horizontal columns called Ranges are numbered 1 to 9.

Ranges are subdivided into Plots lettered A to W.

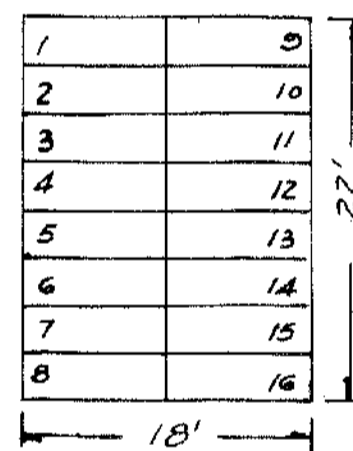
Plots are subdivided into graves as shown in the following diagram.

Each grave measures 2'x9' with 1' of space intervening as in the following diagram.



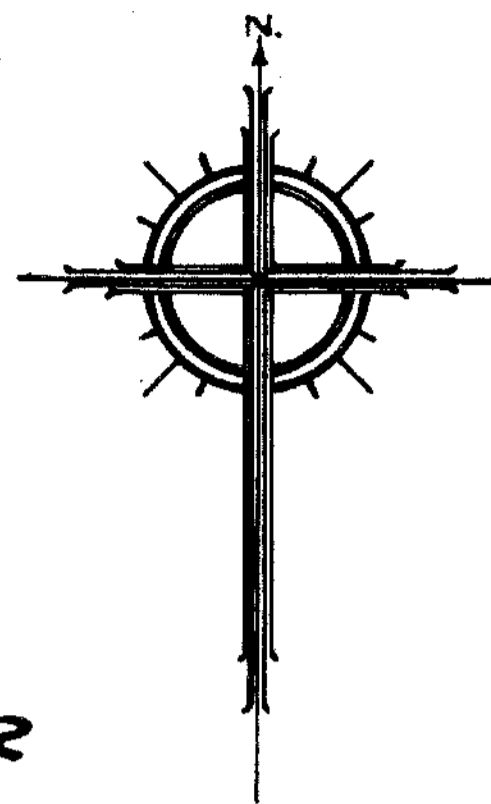
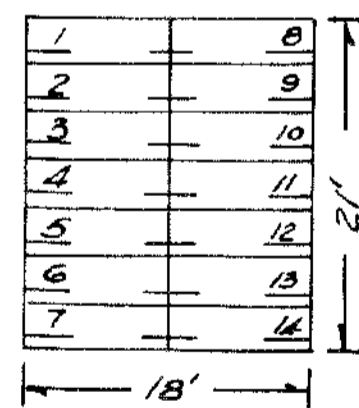
Additional GRAVES Numbered 1A, 12A in Range 4 - Plots C to W. and 23, 24 in Range 5 - Plots D to W. Each grave measures 3'x9'

Plots bordering the perimeter of the Section are numbered 1 to 63, and are subdivided into graves as in the following diagram. Each grave measures 2'x9'x9'.



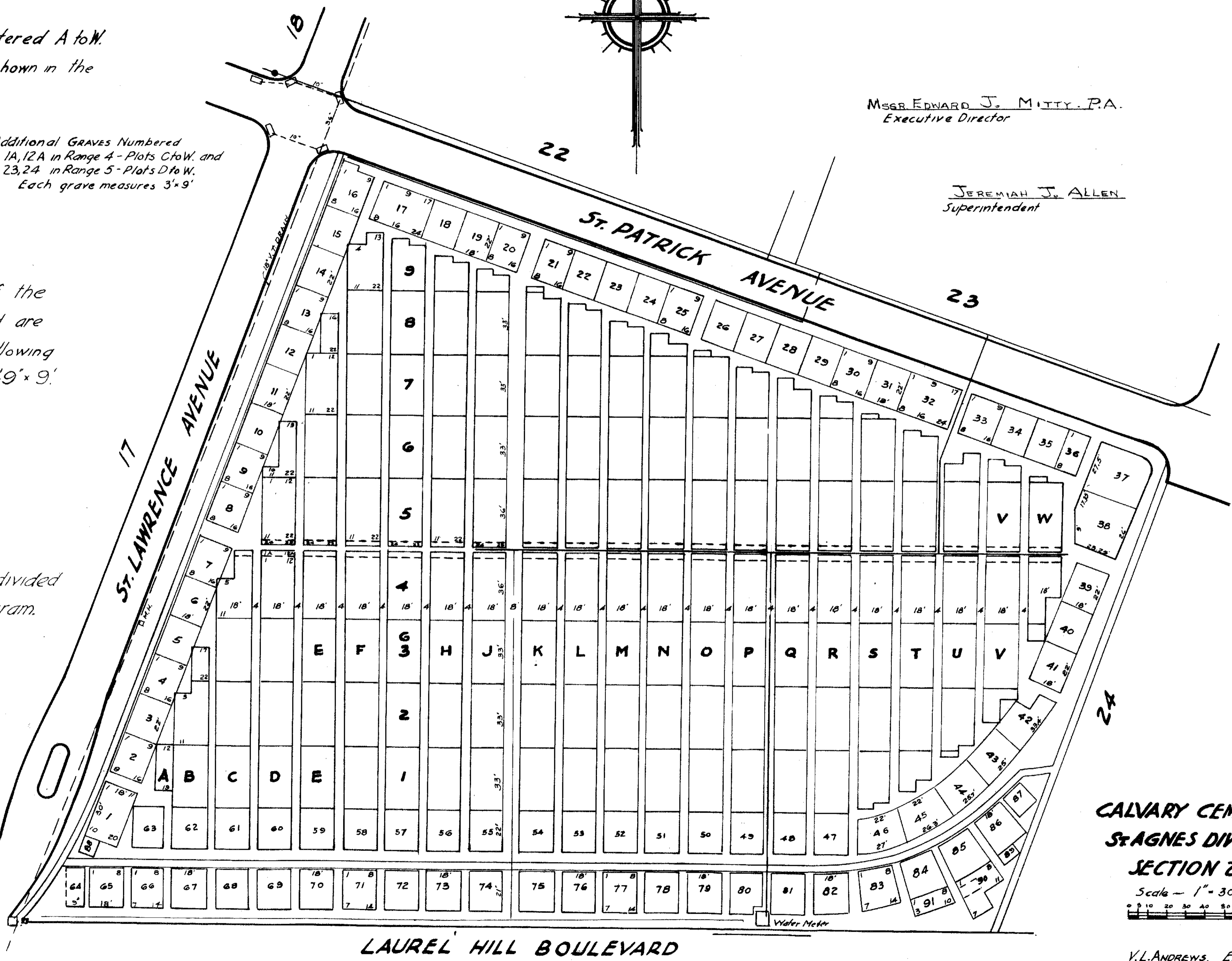
Plots numbered 64 to 91 are subdivided into graves as in the following diagram.

Each grave measures 2'x9' with 1' of space intervening as in the following diagram.



MR. EDWARD J. MITTY, P.A.
Executive Director

JEREMIAH J. ALLEN
Superintendent



CALVARY CEMETERY
St. AGNES DIVISION
SECTION 21

Scale - 1" = 30'



V.L. ANDREWS, Engineer.

JUNE - 1969.

ORIGINAL MAP DRAWN 1914

REVISIONS	
1920.	G.S.G.
1934.	H.J.H.
1938.	H.T.M.
1941.	V.L.A.
1951.	V.L.A.