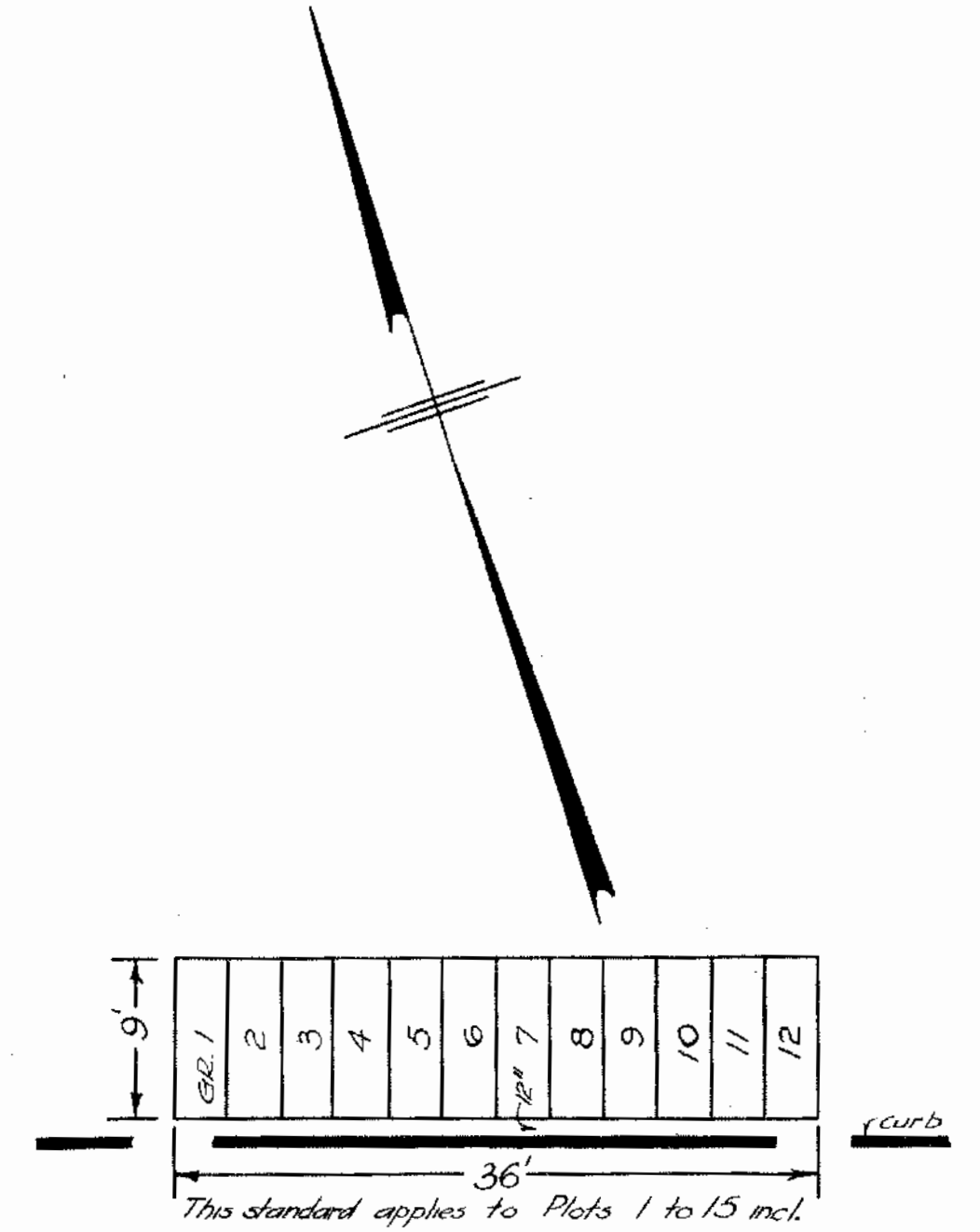
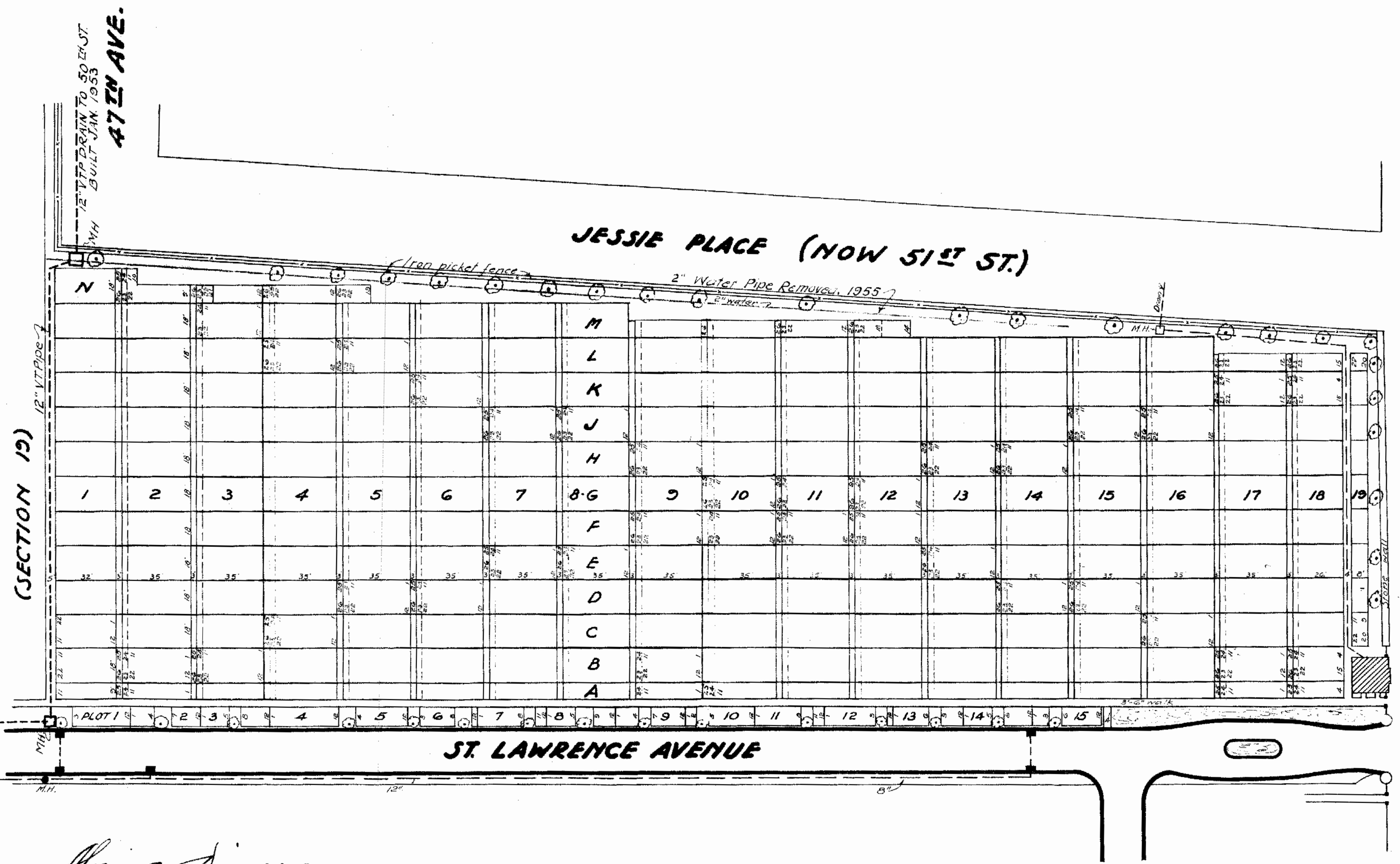


PROPERTY
OF THE
TRUSTEES OF ST. PATRICK'S CATHEDRAL
IN THE
CITY OF NEW YORK.
New York Office ~ 24 East 52nd St.

JESSIE PLACE (NOW 51ST ST.)

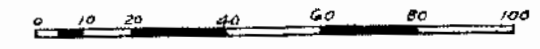
QUEENS BOULEVARD



**SECTION 20
CALVARY CEMETERY
ST. SEBASTIAN DIVISION**

Aug. 15, 1942.

Scale ~ 1" = 40'



This Map supersedes former Map of this Section dated 1898.

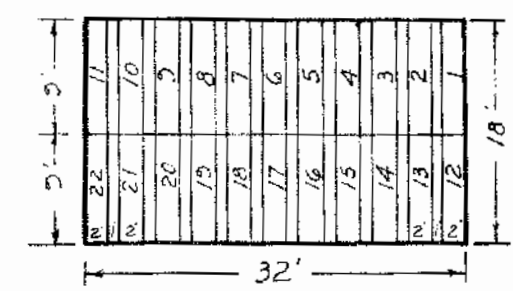
Aloysius Sines
Managing Director

Nancy J. Norton
Superintendent

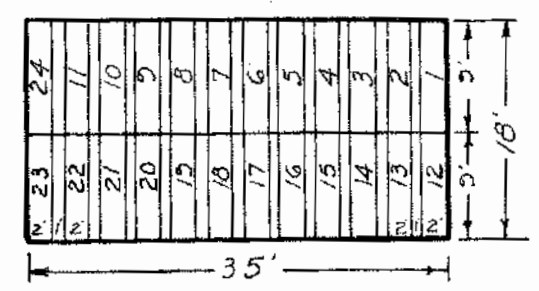
John J. Kearney
Chief Cemetery Clerk

H.T. Manna
Ass't Engineer

Vertical columns are called Ranges and are numbered 1 to 13.
Ranges are subdivided into Plots lettered A to N.



This standard applies to Ranges 1 and 13



This standard applies to Ranges 2 to 18 incl.