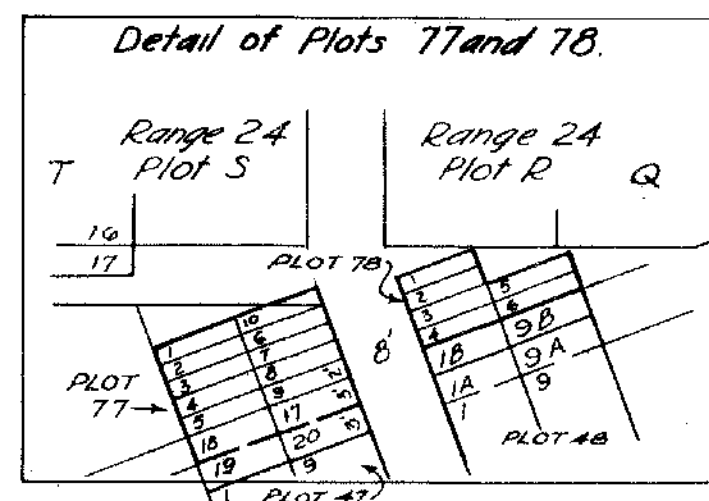
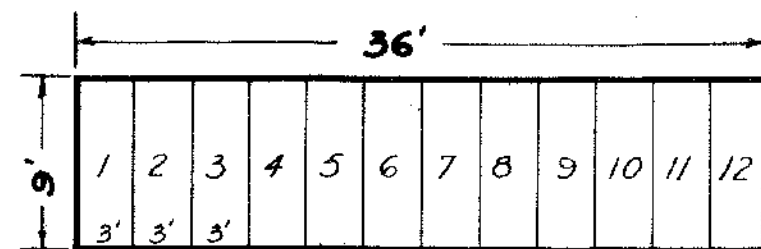


PROPERTY
OF THE
TRUSTEES OF ST. PATRICK'S CATHEDRAL
IN THE
CITY OF NEW YORK.
New York Office - 24 East 52nd St.

Note:-
Horizontal columns called Ranges are numbered 1A to 28.
Ranges are subdivided into Plots lettered A to Z and
AA to NN, J and JJ being omitted. Plots on the Southern
side are not designated by a Range but are numbered 1 to 78.
Plots bordering Boundary Avenue are numbered 100 to 133.

Range 1A, each grave measures 9x3, and
is numbered as indicated on the map.
Plots 100 to 133 are subdivided
into graves as in the following diagram.



Plots in Ranges 1 to 28 and Plots numbered
1 to 78 are subdivided into graves as in
the following diagram, with the exception
of the graves in the fractional plots
which do not conform with the standard
but are numbered consecutively as
indicated on the map.

1B	9B
1A	9A
2	10
3	11
4	12
5	13
6	14
7	15
8	16
1	9
2	10
3	11
4	12
5	13
6	14
7	15
8	16
19	20

Note:- 10-DD-2/5 = 2x9' with
a 12" space between.
grave #1 does not exist
graves 6, 7, 8 = 2x9'.

9-DD-1, 2: each 2x9'
3, 4, 5: each 2x9'
with 12" space
1 for opening
6, 7, 8: do not exist

8-EE-15 does not exist
16, 17 are each
3ft. wide.

Scale - 1" = 50'

This Map supersedes former Map of this Section
Dated 1896

Aljosin J. O'Brien
Managing Director

Harry J. Haulor
Superintendent

Herbert P. Mann
Asst. Engineer

REVISIONS
FEB. 1943. H.T.M.
JAN. 1952. V.L.A.

SECTION 17
CALVARY CEMETERY
ST. SEBASTIAN DIVISION

Oct. 14, 1941. V.L.A.

