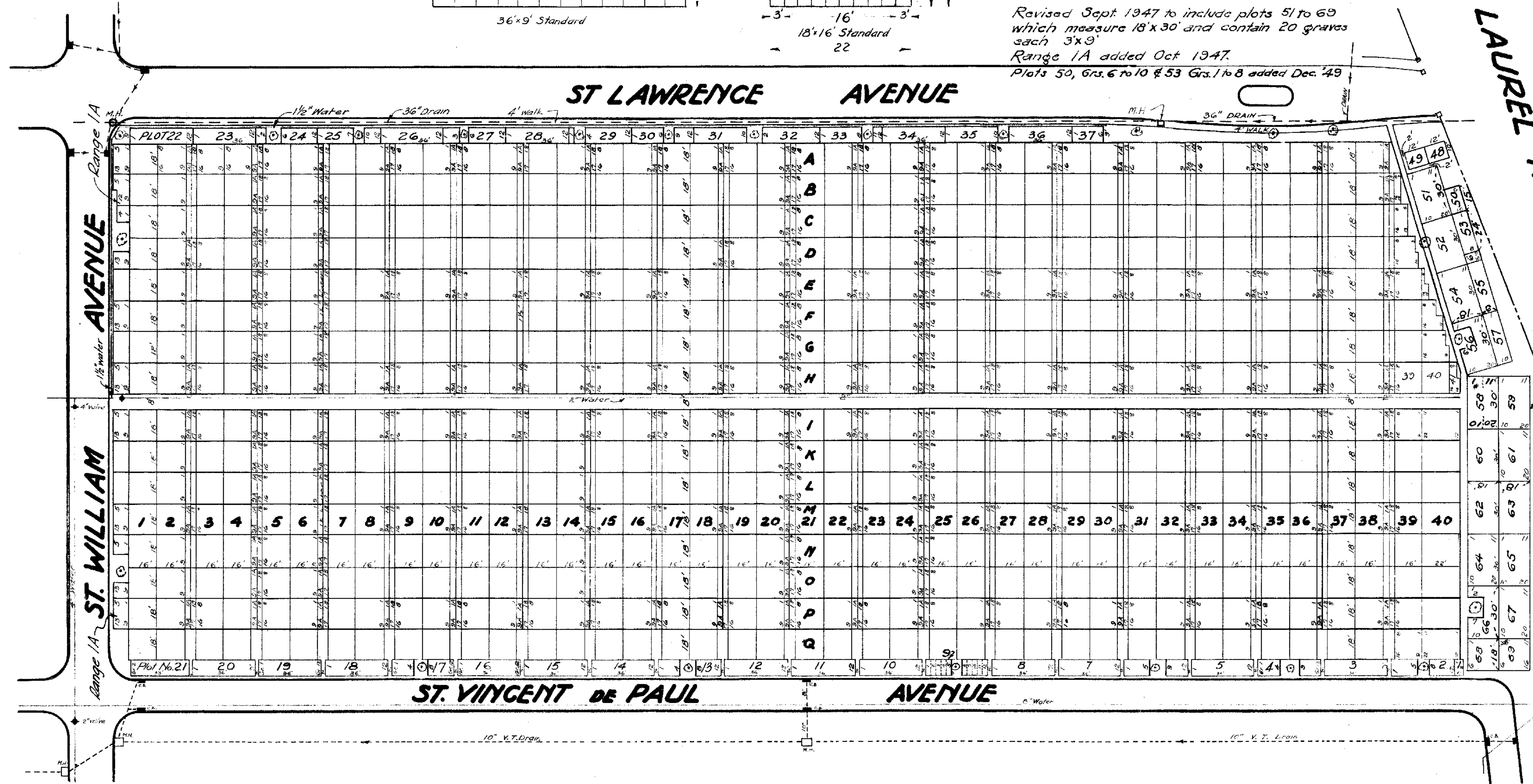


Note:
Vertical columns called Ranges are numbered 1 to 41. Ranges are subdivided into Plots lettered A to Q, J being omitted. A full plot measures 18' x 16' and contains 16 graves, each grave 9' x 2'.
Plots numbered 1 to 21 and 22 to 37 are not designated by a Range. Full Plots measure 36' x 9' and contain 12 graves, each grave 3' x 9'.

REVISED: Nov-1950, to include plots bordering St. Lawrence Ave., numbered 22 to 37 incl., Vault Sites 48 & 49.

Revised Sept. 1947 to include plots 51 to 60 which measure 18' x 30' and contain 20 graves each 3' x 9'.
Range 1A added Oct. 1947.
Plots 50, Grs. 6 to 10 & 53 Grs. 1 to 8 added Dec. '49

LAUREL HILL BOULEVARD



Alorsin C. Simon
Managing Director

PROPERTY OF THE TRUSTEES OF ST. PATRICK'S CATHEDRAL IN THE CITY OF NEW YORK

SECTION II CALVARY CEMETERY ST. AGNES DIVISION

Scale: 1" = 40'

Nancy J. Haulon
Superintendent

Gerald S. Griffin
Engineer

New York Office - 24 East 52nd St.

Jan. 26, 1940

This map supersedes former map of this section dated 1896

Revised: APRIL-24-46