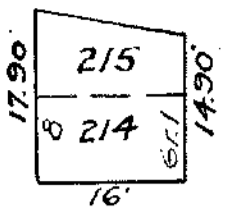
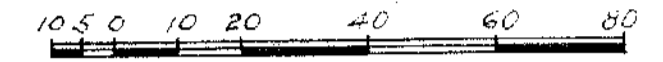


Plot 215 is combined with Plot 214, graves 1-8 & is enclosed therewith



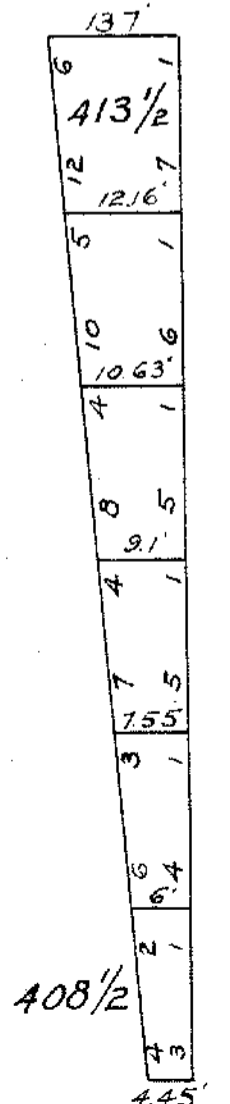
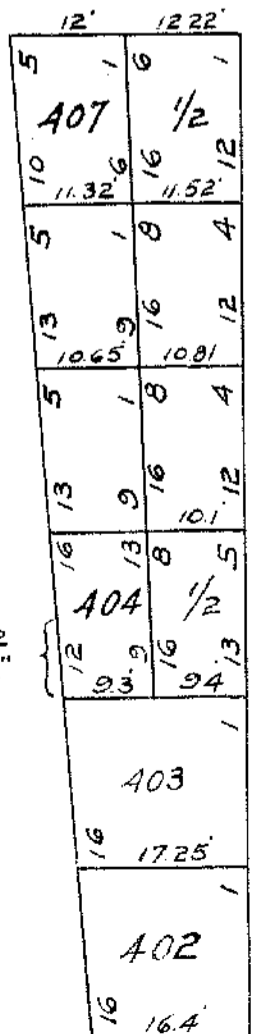
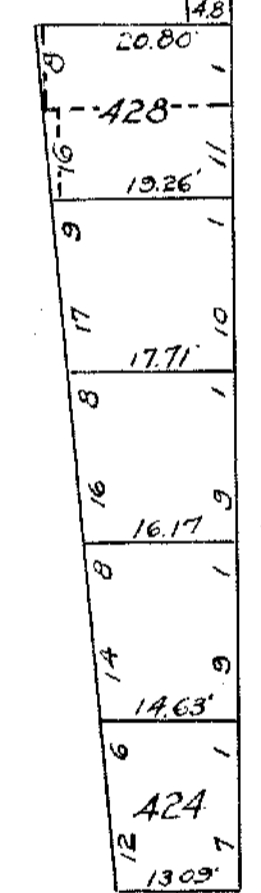
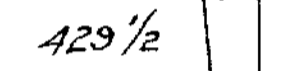
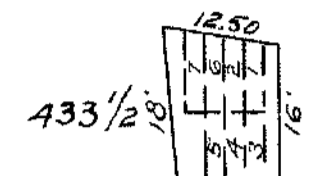
SECTION 10 CALVARY CEMETERY ST. CALIXTUS DIVISION

Scale: 1" = 30'



Plot 253, Gr. 1A added June 12, 1953 for the deedholder of Graves 1 to 4
Plot 253 Gr. 9A added Oct. 8, 1953 for the deedholder of Graves 9 to 12

PROPERTY OF THE TRUSTEES OF ST. PATRICK'S CATHEDRAL IN THE CITY OF NEW YORK



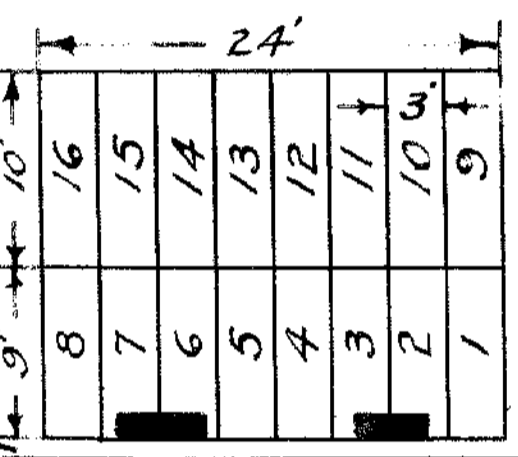
ST. JOHN AVE.

8" VTP Drain
8" CIP Drain

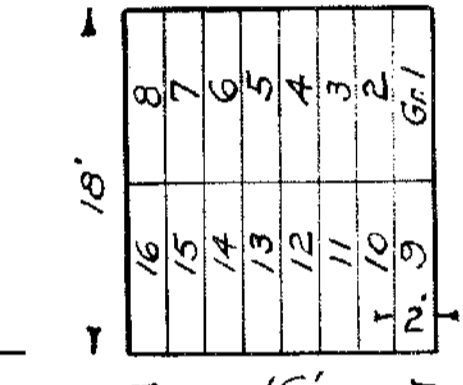
6" VTP Drain
6" CIP Drain

BOUNDARY AVE.

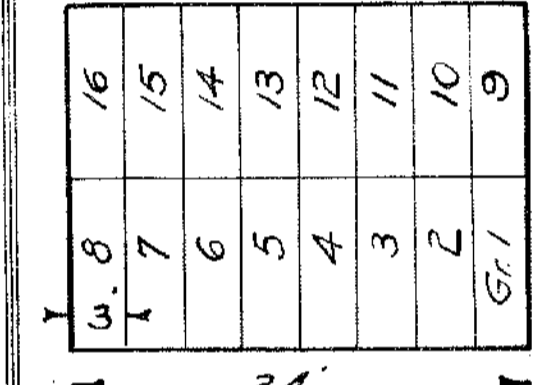
1 FT. to Edge of Path



PLOTS 456-462



This standard applies to Plots Nos. 1 to 433 1/2 unless indicated otherwise on the map



Border Plots, Nos. 435 to 454 are divided into 16 graves each, as shown above

Charles A. Brady
Managing Director

Russell E. Ficks
Superintendent

Harry J. Wambor
Engineer

John T. Kearney
Chief Cemetery Clerk

PLOT 8 1-12 32" WIDE
PLOT 10 1-12 32" WIDE
262 13-15 32" " " 428 1-3 30" "
335 13-15 32" " " 428 11-16 36" "
422 1-3 32" "

NOTE: WIDTH OF GRAVES CHANGED OCT. 17, 1957

ORIGINAL MAP DATED 1896

REVISIONS	
JULY, 1947	VLA
SEPT, 1952	HJH
NOV, 1955	HJH
OCT, 1957	HJH