



3-37-L-5/8 andgd vlt 6" wide  
centers 5/8- Cover 12" below grade

# CALVARY CEMETERY

## ST. CALIXTUS DIVISION

### SECTIONS 3 ~ 1 S<sup>o</sup>

### 3A AND 3B

October, 1927  
1" = 30' or 10" = 900'  
10 20 40 60 80 100

*Raymond C. Brown*  
Managing Director

*J. J. Cunningham*  
Superintendent

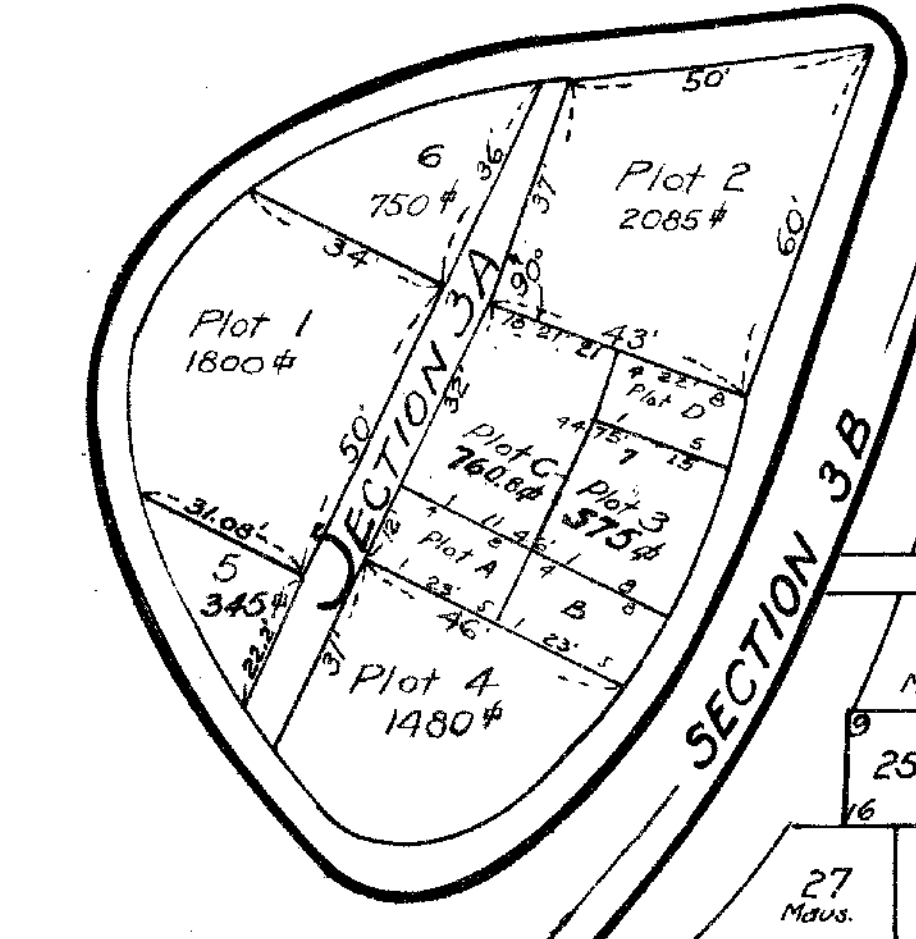
*Edna Griffin*  
Engineer

*Wm. Hanlon*  
Asst. Engineer

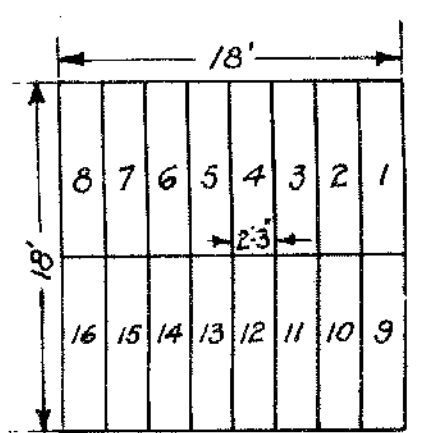
I. S. RANGE	PLT	GRS.
K	4	16
L	5	23
M	7	15-20
N	6	3
O	5	17-22
P	2	3-4
AV 2	A	11
AV 2	B	1

CHANGED TO 32" GRAVES  
NOV. 1957

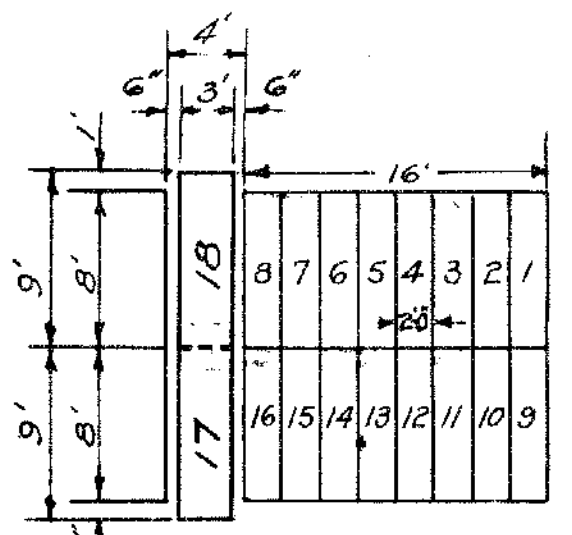
Note: In M-8-17/21 } Each grave is  
M-5-9/10, 2/4 } 5ft long by  
11-K-14 } 3ft wide.



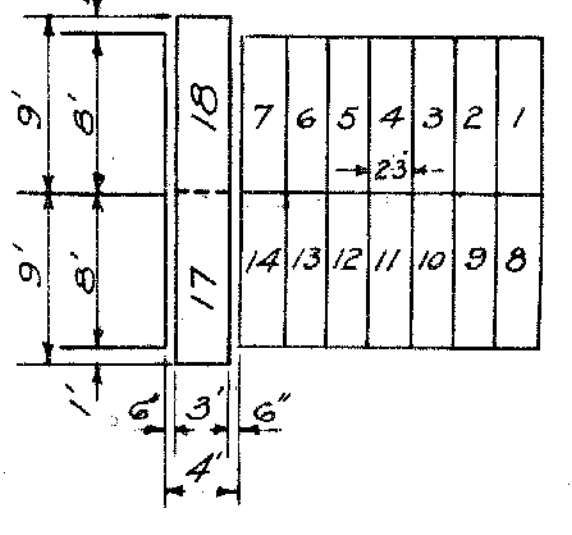
Range 29-Z: 9/10-30" wide



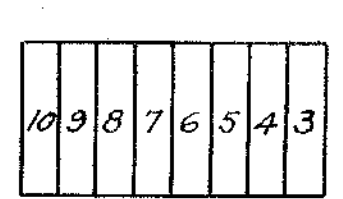
In Section 3B this standard is to apply, unless shown differently.



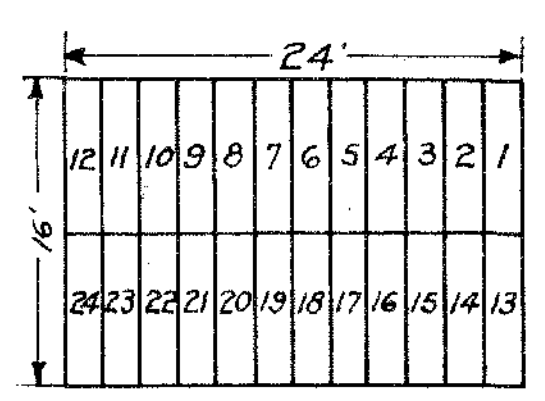
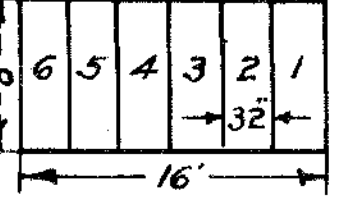
In Section 3 this standard is to apply, unless shown as follows:



To Avenue ground, Section 3, this standard applies, unless shown as follows:



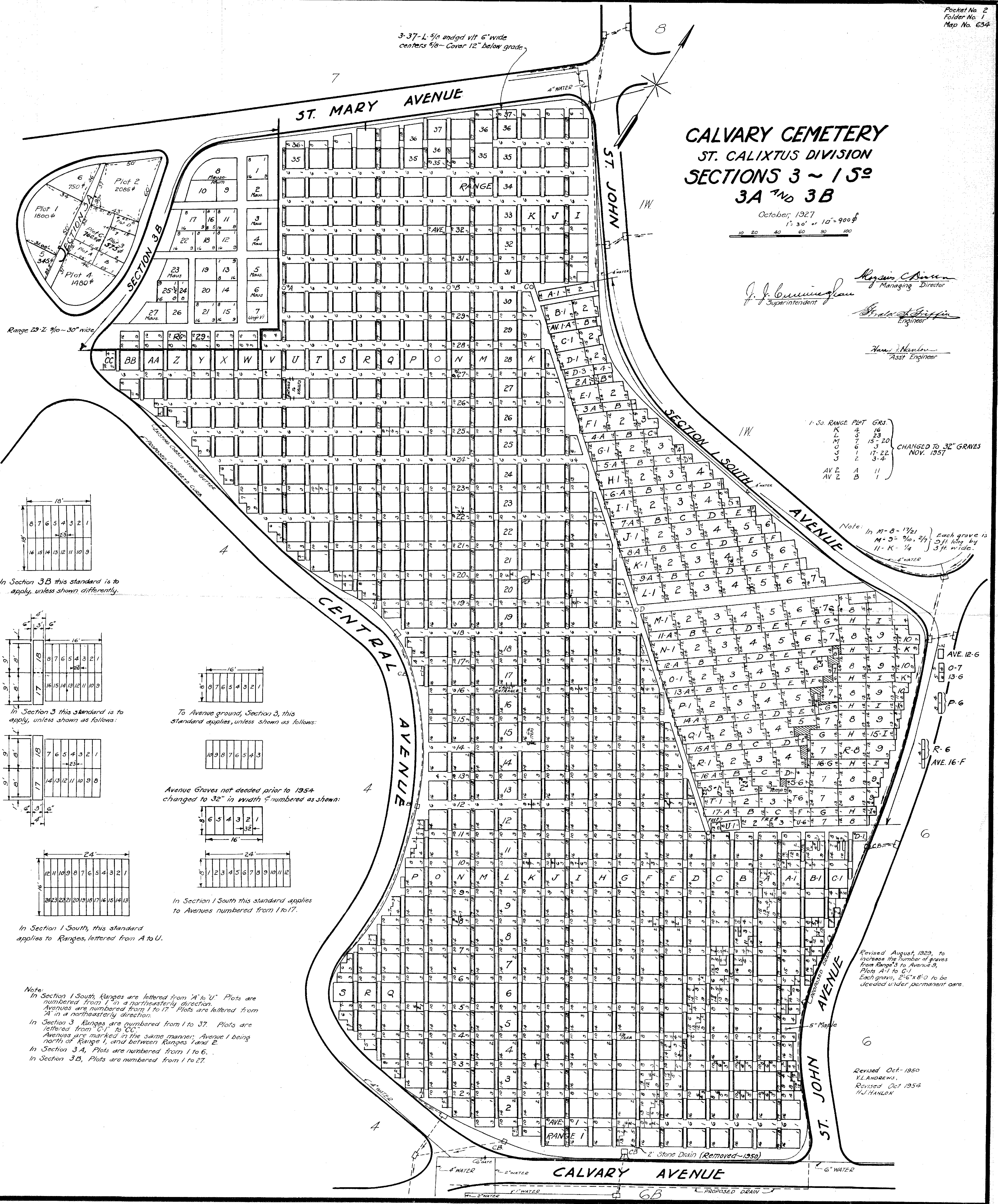
Avenue Graves not decided prior to 1954 changed to 32" in width & numbered as shown:



In Section 1 South this standard applies to Avenues numbered from 1 to 17.

In Section 1 South, this standard applies to Ranges, lettered from A to U.

Note:  
In Section 1 South, Ranges are lettered from 'A' to 'U'. Plots are numbered from 1 in a northeasterly direction. Avenues are numbered from 1 to 17. Plots are lettered from 'A' in a northeasterly direction.  
In Section 3, Ranges are numbered from 1 to 37. Plots are lettered from 'C-1' to 'C-37'. Avenues are marked in the same manner; Avenue 1 being north of Range 1, and between Ranges 1 and 2.  
In Section 3A, Plots are numbered from 1 to 6.  
In Section 3B, Plots are numbered from 1 to 27.



Revised August, 1929, to increase the number of graves from Range 3 to Avenue 3, Plots A-1 to C-1. Each grave, 2'6" x 8'0" to be decided under permanent care.

Revised Oct-1950  
V.L. ANDREWS,  
Revised Oct 1954  
H.J. HANLON